

**CITY OF NAPLES  
PURCHASING DIVISION  
CITY HALL, 735 8<sup>TH</sup> STREET SOUTH  
NAPLES, FLORIDA 34102  
PH: 239-213-7100 FX: 239-213-7105**

**ADDENDUM NUMBER 2**

NOTIFICATION DATE:	BID TITLE:	BID NUMBER:	BID OPENING DATE & TIME:
01/08/16	Central Avenue Improvements - Construction	16-012	<b>NEW</b> 01/20/2016 2:00PM

**THE FOLLOWING INFORMATION IS HEREBY INCORPORATED INTO,  
AND MADE AN OFFICIAL PART OF THE ABOVE REFERENCED BID.**

The following clarifications are issued as an addendum identifying the following changes for the referenced solicitation:

Submitted written questions:

- 1) I'm looking at the signalization plans on page T-3 for Pay Item # 630-2-12 for Directional Bore. The symbol for DB shows a line with 2 dots. I'm seeing more DB symbols than the Tabulation of Quantities shows.

**ANSWER: Refer to Addendum 2 - Exhibit A**

- 2) Pay Item No. 630-2-12 for the 25' and 10' lengths also on page T-3. We are questioning where these arrows are pointing too.

**ANSWER: Refer to Addendum 2 - Exhibit A**

- 3) City of Naples specs mention nothing about line stops. Can you confirm whether or not any of these line stop fittings will need to be anything other than the standard epoxy-coated ductile fittings.

**ANSWER: Refer to Addendum 2 - Exhibit A**

Addendum 2 - **Exhibit A** – Letter from Kimley-Horn and Associates, Inc  
Addendum 2 - **Exhibit B** – Revised Summary of Pay Items Sheet 2A  
Addendum 2 - **Exhibit C** – Revised Standard Mast Arm Assemblies Sheet T-5  
Addendum 2 - **Exhibit D** – Revised Opinion of Probable Construction Cost  
Addendum 2 - **Exhibit E** – Revised Landscape Plans  
Addendum 2 - **Exhibit F** – Revised Central Bid Form (Final)

**IMPORTANT MESSAGE**

**PLEASE ACKNOWLEDGE RECEIPT OF THIS ADDENDUM ON THE BID COVER SHEET.**

**Addendum 2 - Exhibit A - Letter from Kimley-Horn and Associates, Inc**



January 6, 2016

Gregg Strakaluse, P.E.  
City of Naples  
295 Riverside Circle  
Naples, FL 34102

Re: Central Avenue Improvement Bid Plans - Addendum

Our Ref: 048320002

Mr. Strakaluse,

Please see below a composite list of questions/concerns received regarding bidding of the subject project and our responses in **bold**:

1. I'm looking at the signalization plans on page T-3 for Pay Item # 630-2-12 for Directional Bore. The symbol for DB shows a line with 2 dots. I'm seeing more DB symbols than the Tabulation of Quantities shows.
2. Pay Item No. 630-2-12 for the 25' and 10' lengths also on page T-3. We are questioning where these arrows are pointing too.

**Regarding 1 & 2 above:**

**Directional bore callouts and quantities in the plans are based on FDOT's criteria that went into effect in July 2013. Per the descriptions for conduit items in FDOT's Basis of Estimates Manual: "Measurement- Trench or Bore: Measurement is for the straight line Horizontal Distance of the trench or bore, from pull box to pull box, with no allowance for sweeps or vertical distance. No additional payment will be made for multiple runs of conduit within a trench or bore." The quantity of directional bore shown on the Tabulation of Quantities sheet consists of the following:**

- **130 feet under Goodlette-Frank Road (regardless of the number of conduits in the bore);**
- **110 feet under Riverside Circle (again, regardless of the number of conduits in the bore);**
- **25 feet under the concrete sidewalk in the northeast quadrant; and**
- **10 feet under the concrete sidewalk in the northwest quadrant.**

**For a Total of 275 feet**

**The 25-foot callout and the 10-foot callout were simply stacked with the respective pull boxes that serve each group of loop assemblies involved. In each case, these conduit runs go under concrete sidewalk and (by FDOT's definition) are called out with the 630-2-12 pay item instead of the 630-2-11 Open Trench pay item.**

**Different linetypes were not used to distinguish between trenched conduit versus directional bore conduit. Instead, we relied on the pay item numbers (630-2-11 or 630-2-12) to make the distinction for each stack of callouts**

3. City of Naples specs mention nothing about line stops. Can you confirm whether or not any of these line stop fittings will need to be anything other than the standard epoxy-coated ductile fittings. Please advise.

**The City requires the Hydra-Stop HSF 250 Line Stop Fitting for all line stops called out in the construction plans. The contractor may also propose an Insertion Valve instead of the line stop and gate valve combination. The City requires the Hydra-Stop IV 250 Insertion Valve if this option is preferred. The contractor may propose an alternative line stop or insertion valve, but approval will be required from the Engineer and City.**

**Please also note that thrust blocks (dead mans) are required restraints on both sides of the line stop or insertion valve**

Gary J. Nadeau  
Kimley-Horn and Associates, Inc.  
1777 Main Street, Suite 200  
Sarasota, FL 34236

Gary.Nadeau@Kimley-Horn.com  
Phone: 941.379.7600

Sincerely,

KIMLEY-HORN AND ASSOCIATES, INC.

Gary J. Nadeau, P.E.  
Project Manager

**Addendum 2 - Exhibit B – Revised Summary of Pay Items Sheet 2A**

ITEM NO.	ITEM DESCRIPTION	UNIT	PROJECT QUANTITY
1080 11409	UTIL FIXT, F&I, 8-19.9", MECH JONT RESTR	EA	260
1644113 08	FIRE HYDRANT,F&I,STD,2 HOSE,1PUMP,6"	EA	5
-	Long Water Services	EA	8
-	Short Water Services	EA	10
<b>Landscaping</b>			
751-38-11	BENCH	EA	3
<b>SINGLE TRUNK PALMS - LARGE PLANTS</b>			
580-1-2	ARCHONTOPHOENIX CUNNINGHAMIANA (PICCABEEN PALM)	EA	29
580-1-2	ROYSTONEA REGIA (ROYAL PALM)	EA	63
580-1-2	ADONIDIA MERRILLII (CHRISTMAS PALM)	EA	45
<b>TREES - LARGE PLANS</b>			
580-1-2	QUERCUS VIRGINIANA 'HIGH RISE' (HIGH RISE SOUTHERN LIVE OAK)	EA	17
580-1-2	TAXODIUM DISTICHUM (BALD CYPRESS)	EA	9
<b>SHRUBS - SMALL AND LARGE PLANTS</b>			
580-1-2	CHRYSOBALANUS ISAGO 'RED TIP' (RED TIP COCOPLUM)	EA	232
580-1-1	DIANELLA TASMANICA 'VARIEGATA' (FLAX LILY)	EA	675
580-1-1	CODIAEUM VARIEGATUM 'MAMMEY' (CROTON)	EA	692
580-1-1	SCHEFFLERA ARBORICOLA 'TRINETTE' (VARIEGATED SCHEFFLERA)	EA	505
580-1-1	DURANTA REPANS 'GOLD MOUND' (GOLDEN DEWDROP DURANTA)	EA	101
580-1-1	FICUS MICROCARPA 'GREEN ISLAND' (GREEN ISLAND FICUS)	EA	3019
580-1-1	JUNIPERUS CHINENSIS 'PARSONII' (CHINESE JUNIPER)	EA	488
580-1-1	NEOREGELIA X 'ROYAL BURGANDY' (ROYAL BURGANDY BROMELIAD)	EA	186
<b>ANNUALS</b>			
580-1-1	ANNUALS	EA	308
<b>ORNAMENTAL GRASSES - SMALL PLANTS</b>			
580-1-1	MUHLENBERGIA CAPILLARIS (PINK MUHLY)	EA	503
580-1-1	SPARTINA BAKERI (SAND CORD GRASS)	EA	156
<b>SOIL AMENDMENTS</b>			
-	BOLD & GOLD	CY	48
<b>Irrigation</b>			
0590 70	IRRIGATION SYSTEM	LS	1

PAY ITEM FOOTNOTES:

- 0101 1 - MAINTENANCE OF TRAFFIC PHASING AND DETOUR LAYOUT TO BE PROVIDED BY CONTRACTOR PRIOR TO CONSTRUCTION AND WILL REQUIRE PRIOR APPROVAL BY CITY ENGINEER BEFORE INSTALLATION. CONTRACTOR WILL BE REQUIRED TO CLOSELY COORDINATE WITH CITY ENGINEER TO PHASE CONSTRUCTION IN A WAY TO MINIMIZE DISRUPTION OF PEDESTRIAN AND VEHICULAR TRAFFIC. ALL COORDINATION, PHASING COSTS, MATERIALS, AND INSTALLATION WILL BE INCLUDED IN THE LUMP SUM ITEM.
- 0520 1 10 - DROP CURB INCLUDED IN THE COST OF PARENT CURB. QUANTITY INCLUDES MOD. DROP CURB AT PERVIOUS PARKING AREAS.
- 0527 2 - DETECTABLE WARNINGS SHALL BE EMBEDDED.
- 0526 1 1(A-C) - COST TO INCLUDE ALL PAVERS, AGGREGATE, CONCRETE, BEDDING, BASE, SUB-BASE AND ALL OTHER MATERIALS AS DETAILED IN THE TYPICAL SECTIONS OF THESE PLANS. MATERIAL TYPE AND COLOR TO BE FINALIZED DURING THE SHOP DRAWING APPROVAL PROCESS.
- 0440 1 10 - WILL INCLUDE ALL WORK ASSOCIATED WITH INSTALLATION OF UNDERDRAINS, NECESSARY CLEAN-OUTS (AS IDENTIFIED DURING CONSTRUCTION) AND ALL OTHER ASSOCIATED MATERIALS.
- 751-38-11 - COST OF BENCH TO INCLUDE PAVERS. 1
- B10 S. - WILL INCLUDE COST OF ALL WORK, SELECT SOIL MATERIAL, FILTER BED AND ASSOCIATED MATERIALS AS OUTLINED ON LOW IMPACT DEVELOPMENT DETAIL SHEET.

REVISIONS

DATE	DESCRIPTION	DATE	DESCRIPTION
01/04/16	PAY ITEM REVISED, PAY ITEM (BENCH) ADDED AND PAY ITEM FOOTNOTE ADDED		

**Kimley»Horn**

GARY J. NADEAU, P.E.  
P.E. LICENSE NUMBER: 49629  
1777 MAIN STREET, SUITE 200  
SARASOTA, FLORIDA 34236  
PHONE (941) 379-7600  
CERTIFICATE OF AUTHORIZATION: 00000696

CITY OF NAPLES

CENTRAL AVENUE

**SUMMARY OF PAY ITEMS**

SHEET NO.

2A

Addendum 2 - Exhibit C - Revised Standard Mast Arm Assemblies Sheet T-5

STANDARD MAST ARM ASSEMBLIES DESIGN TABLE																			
STRUCTURE ID NUMBERS	ASSEMBLY (1) NUMBERS	FIRST ARM			SECOND ARM			UF (deg)	LL (deg)	POLE				SPECIAL DRILLED SHAFT DATA(4)					
		ARM TYPE	FAA(2) (ft.)	FBA(2) (In.)	ARM TYPE	FAA(2) (ft.)	FBA(2) (In.)			POLE TYPE	UAA(3) (ft.)	UB (ft.)	UCA(3) (In.)	DA (ft.)	DB (ft.)	RA	RB	RC	RD (In.)
POLE B	D5-S23-LUM	D5	-	-	-	-	-	-	0	S23-LUM	-	20	-	16.5*	4.5	11	16	10	8
POLE C	D3-S2	D3	-	-	-	-	-	-	-	S2	22	19	14.95	13	4.5	11	16	9	12

\* 16.5' is minimum embedment. Drilled shaft must be embedded 3.0' into limestone layer.

TABLE NOTES:

(1) Assembly Number Legend

Single Arm:  
 Arm Type - Pole Type = B# - Q#  
 = C# - R#

Double Arm:

First Arm Type - Second Arm Type - Pole Type = B# - B# - Q#  
 = C# - C# - R#

(2) If an entry appears in columns "FAA" and "FBA", a shorter arm is required. This is obtained by removing length from the arm tip. For these cases the mast arm length shall be shortened from "FA" to "FAA" and the tip diameter shall be increased from "FB" to "FBA".

(3) If an entry appears in columns "UAA" and "UCA", a shorter pole is required. This is obtained by removing length from the pole tip. For these cases the pole height shall be shortened from "UA" to "UAA" and the pole tip diameter shall be increased from "UC" to "UCA".

(4) The foundations for Standard Mast Arm Assemblies are pre-designed and are based upon the following conservative soil criteria which covers the great majority of soil types found in Florida. Only complete the "Special Drilled Shaft Data" information if site conditions dictate drilled shafts in soils with lesser strength properties.

Classification = Cohesionless (Fine Sand)  
 Friction Angle = 30 Degrees (30°)  
 Unit Weight = 50 lbs./cu. ft. (assumed saturated)

GENERAL NOTES:

(1) Work this sheet with the Signal Designer's "Mast Arm Tabulation". See "Mast Arm Tabulation" for special instructions that include non-standard Handhole location, paint color, terminal compartment requirement, and pedestrian features.

(2) Work this sheet with (July 2015) Design Standards Index Nos. 17741, 17743, and 17745 as necessary.

FOUNDATIONS NOTE:

The foundations were designed based on the following geotechnical parameters from the January 4, 2016 geotechnical report by GFA International (Project No. 15-2531):

Pole B:  
 Depth 0'-13.5': Classification = Cohesionless  
 Friction Angle = 30°  
 Unit Weight = 47.6 pcf  
 N<sub>60</sub> = 5

Depth 13.5'-22.5': Classification = Limestone  
 Cohesion = 5000 psf  
 Unit Weight = 47.6 pcf

Pole C:  
 Classification = Cohesionless  
 Friction Angle = 30°  
 Unit Weight = 49.6 pcf  
 N<sub>60</sub> = 10.6

REVISIONS

DATE	DESCRIPTION	DATE	DESCRIPTION
1/4/16	Foundation data and notes revised per received geotechnical information		

**Kimley»Horn**

SETH E. SCHMID, P.E.  
 P.E. LICENSE NUMBER: 54640  
 1777 MAIN STREET, SUITE 200  
 SARASOTA, FLORIDA 34236  
 PHONE (941) 379-7600  
 CERTIFICATE OF AUTHORIZATION: 00000696

CITY OF NAPLES  
 CENTRAL AVENUE

TABLE OF VARIABLES  
 STANDARD MAST ARM  
 ASSEMBLIES

SHEET NO.  
 T-5

# Addendum 2 - Exhibit D – Revised Opinion of Probable Construction Cost

## OPINION OF PROBABLE CONSTRUCTION COST (Bid Plans December 2015)

CENTRAL AVE IMPROVEMENTS					
ITEM NO.	DESCRIPTION	UNIT	QTY	UNIT PRICE	AMOUNT
<b>Roadway</b>					
0101 1	MOBILIZATION	LS	1	\$ 229,427.00	\$ 229,427.00
0102 1	MAINTENANCE OF TRAFFIC	LS	1	\$ 229,427.00	\$ 229,427.00
0104 10 3	SEDIMENT BARRIER	LF	1885	\$ 1.06	\$ 1,998.10
0104 18	INLET PROTECTION SYSTEM	EA	44	\$ 93.60	\$ 4,118.40
0110 1 1	CLEARING & GRUBBING	AC	3.72	\$ 14,180.30	\$ 52,750.72
0110 4	REMOVAL OF EXISTING CONCRETE PAVEMENT	SY	2230	\$ 21.19	\$ 47,253.70
0120 1	REGULAR EXCAVATION	CY	3908	\$ 4.32	\$ 16,882.56
0120 6	EMBANKMENT	CY	813	\$ 10.29	\$ 8,365.77
0160 4	TYPE B STABILIZATION	SY	7547	\$ 4.26	\$ 32,150.22
0162 1 11	PREPARED SOIL LAYER, FINISH SOIL, 6"	SY	533	\$ 0.78	\$ 415.74
0210 1 8	REWORKING LIMESTONE BASE, 4"	SY	155	\$ 8.00	\$ 1,240.00
0285709	OPTIONAL BASE, BASE GROUP 09	SY	5104	\$ 23.73	\$ 121,117.92
0327 70 5	MILLING EXIST ASPH PAVT, 2" AVG DEPTH	SY	11693	\$ 4.76	\$ 55,658.68
0334 1 12	SUPERPAVE ASPHALTIC CONC, TRAFFIC B	TN	1205.4	\$ 95.88	\$ 115,573.75
0334 1 12	SUPERPAVE ASPHALTIC CONC, TRAFFIC B (OVERBUILD)	TN	470.6	\$ 95.88	\$ 45,121.13
0337 7 42	ASPH CONC FC, TRAFFIC B, FC-9.5, PG 76-22	TN	929.2	\$ 123.34	\$ 114,607.53
0339 1	MISC. ASPHALT PAVEMENT	TN	8.25	\$ 147.17	\$ 1,214.15
0425 1201	INLETS, CURB, TYPE 9, <10	EA	2	\$ 3,124.08	\$ 6,248.16
0425 1203	INLETS, CURB, TYPE 9, J BOT, <10	EA	1	\$ 5,579.36	\$ 5,579.36
0425 1351	INLETS, CURB, TYPE P-5, <10	EA	7	\$ 4,254.44	\$ 29,781.08
0425 1361	INLETS, CURB, TYPE P-6, <10	EA	7	\$ 4,659.70	\$ 32,617.90
0425 1362	INLETS, CURB, TYPE P-6, >10	EA	1	\$ 6,122.39	\$ 6,122.39
0425 1451	INLETS, CURB, TYPE J-5, <10	EA	1	\$ 6,850.44	\$ 6,850.44
0425 1461	INLETS, CURB, TYPE J-6, <10	EA	1	\$ 7,246.66	\$ 7,246.66
0425 1521	INLETS, DT BOT, TYPE C, <10'	EA	8	\$ 2,843.71	\$ 22,749.68
0425 1910	INLETS, CLOSED FLUME	EA	6	\$ 4,223.87	\$ 25,343.22
0425 2 41	MANHOLE, P-7, <10'	EA	8	\$ 3,926.67	\$ 31,413.36
0425 2 43	MANHOLE, P-7, PARTIAL	EA	4	\$ 2,171.76	\$ 8,687.04
0425 2 61	MANHOLE, P-8 <10	EA	1	\$ 3,276.96	\$ 3,276.96
0425 2 71	MANHOLE, J-7, <10'	EA	3	\$ 5,540.76	\$ 16,622.28
0425 2 73	MANHOLE, J-7, PARTIAL	EA	1	\$ 3,315.83	\$ 3,315.83
0425 2 93	MANHOLE, J-8, PARTIAL	EA	1	\$ 4,286.49	\$ 4,286.49
0430175118	PIPE CULV, OPT. MATL, ROUND 18" S/CD	LF	1791	\$ 74.39	\$ 133,232.49
0430175124	PIPE CULV, OPT. MATL, ROUND 24" S/CD	LF	220	\$ 79.27	\$ 17,439.40
0430175130	PIPE CULV, OPT. MATL, ROUND, 30" S/CD	LF	1026	\$ 90.55	\$ 92,904.30
0430175218	PIPE CULV, OPT. MATL, OTHER 18" S/CD	LF	398	\$ 66.31	\$ 26,391.38
0440 1 10	UNDERDRAIN, TYPE I	LF	591	\$ 23.66	\$ 13,983.06
0520 1 10	CONCRETE CURB & GUTTER, TYPE F	LF	5915	\$ 18.21	\$ 107,712.15
0520 2 2	CONCRETE CURB, TYPE B	LF	426	\$ 23.75	\$ 10,115.13
0520 2 4	CONCRETE CURB, TYPE D	LF	4320	\$ 14.96	\$ 64,627.20
0520 2 8	CONCRETE CURB, TYPE RA	LF	302	\$ 33.36	\$ 10,068.05
0522 1	SIDEWALK CONC, 4" THICK	SY	3496	\$ 35.10	\$ 122,709.60
0522 2	SIDEWALK CONC, 6" THICK	SY	176	\$ 45.93	\$ 8,083.68
0526 1 1-A	PAVERS, ARCHITECTURAL, TRUCK APRON	SY	250	\$ 80.00	\$ 20,016.00
0526 1 1-B	PAVERS, ARCHITECTURAL, SPLITTER ISLANDS	SY	135	\$ 80.00	\$ 10,800.00
0526 1 1-C	PERVIOUS PAVERS, ARCHITECTURAL, PARKING	SY	557	\$ 90.00	\$ 50,130.00
550 10 228	FENCING, TYPE B, 5.1-6.0, RESET EXISTING	LF	280	\$ 15.00	\$ 4,200.00
550 60 223	FENCE GATE, TYPE B, DOUBLE, 12.1-18.0' OPENING	EA	1	\$ 1,100.00	\$ 1,100.00
0527 2	DETECTABLE WARNINGS	SF	328	\$ 31.26	\$ 10,253.28
0570 1 2	PERFORMANCE TURF, SOD	SY	533	\$ 2.03	\$ 1,081.99
BIO-S.	BIOSWALES (WATER QUALITY SYSTEM)	EA	6	\$ 20,000.00	\$ 120,000.00

**OPINION OF PROBABLE CONSTRUCTION COST**  
(Bid Plans December 2015)

CENTRAL AVE IMPROVEMENTS					
ITEM NO.	DESCRIPTION	UNIT	QTY	UNIT PRICE	AMOUNT
<b>Signing and Marking</b>					
0523 1 3	PATTERNED PAVEMENT, VEHICULAR AREAS, GREEN BIKE LANE	SY	744	\$ 50.00	\$ 37,200.00
0700 1 11	SINGLE POST SIGN, F&I, LESS THAN 12 SF	AS	39	\$ 326.92	\$ 12,749.88
0700 1 50	SINGLE POST SIGN, RELOCATE	AS	3	\$ 271.70	\$ 815.10
0700 1 60	SINGLE POST SIGN, REMOVE	AS	1	\$ 21.80	\$ 21.80
0706 3	RETRO-REFLECTIVE PAVEMENT MARKERS	EA	142	\$ 3.73	\$ 529.66
0711 11123	THERMOPLASTIC, STD, WHITE, SOLID, 12"	LF	2026	\$ 2.22	\$ 4,497.72
0711 11124	THERMOPLASTIC, STD, WHITE, SOLID, 18"	LF	30	\$ 3.42	\$ 102.60
0711 11125	THERMOPLASTIC, STD, WHITE, SOLID, 24"	LF	2201	\$ 4.45	\$ 9,794.45
0711 11141	THERMOPLASTIC, STD, WHITE, 2-4 DOTTED GUIDELINE / 6-10 DOTTED EXTENSION LINE, 6"	GM	0.769	\$ 2,484.73	\$ 1,910.76
0711 11160	THERMOPLASTIC, STD, WHITE, MESSAGE	EA	8	\$ 128.81	\$ 1,030.48
0711 11170	THERMOPLASTIC, STD, WHITE, ARROW	EA	19	\$ 61.84	\$ 1,174.96
0711 11180	THERMOPLASTIC, STD, WHITE, YIELD LINE	LF	111	\$ 10.79	\$ 1,197.69
0711 11224	THERMOPLASTIC, STD, YELLOW, SOLID, 18"	LF	149	\$ 3.34	\$ 497.66
0711 11241	THERMOPLASTIC, STD, YELLOW, 2-4 DOTTED GUIDELINE / 6-10 DOTTED EXTENSION LINE, 6"	GM	0.129	\$ 1,609.20	\$ 207.59
0711 11421	THERMOPLASTIC, STD, BLUE, SOLID, 6"	LF	56	\$ 1.46	\$ 81.76
0711 14160	THERMOPLASTIC, PREFORMED, WHITE, MESSAGE	EA	22	\$ 237.28	\$ 5,220.16
0711 14170	THERMOPLASTIC, PREFORMED, WHITE, ARROWS	EA	21	\$ 117.58	\$ 2,469.18
0711 16101	THERMOPLASTIC, STD-OTHER SURFACES, WHITE, SOLID, 6"	GM	1.615	\$ 4,045.84	\$ 6,534.03
0711 16102	THERMOPLASTIC, STD-OTHER SURFACES, WHITE, SOLID, 8"	GM	0.047	\$ 5,963.75	\$ 280.30
0711 16131	THERMOPLASTIC, STD-OTHER SURFACES, WHITE, SKIP, 6"	GM	0.030	\$ 1,332.31	\$ 39.97
0711 16201	THERMOPLASTIC, STD-OTHER SURFACES, YELLOW, SOLID, 6"	GM	1.093	\$ 4,085.89	\$ 4,465.88
0711 16202	THERMOPLASTIC, STD-OTHER SURFACES, YELLOW, SOLID, 8"	GM	0.020	\$ 5,212.09	\$ 104.24
<b>Signalization</b>					
0630 2 11	CONDUIT, F&I, OPEN TRENCH	LF	750	\$ 5.67	\$ 4,252.50
0630 2 12	CONDUIT, F&I, DIRECTIONAL BORE	LF	275	\$ 24.37	\$ 6,701.75
0632 7 1	SIGNAL CABLE, FURNISH & INSTALL	PI	1	\$ 8,272.84	\$ 8,272.84
0635 2 11	PULL & SPLICE BOX, F&I, 13"X24" COVER SIZE	EA	14	\$ 547.99	\$ 7,671.86
0641 2 70	PRESTRESSED CONCRETE POLE, SHALLOW POLE REMOVAL, POLE 30' & GREATER	EA	1	\$ 1,960.27	\$ 1,960.27
0646 1 11	ALUMINUM SIGNALS POLE, PEDESTAL	EA	2	\$ 1,058.62	\$ 2,117.24
0646 1 60	ALUMINUM SIGNALS POLE, REMOVE	EA	2	\$ 233.31	\$ 466.62
0649 31102	MAST ARM, F&I, WIND SPEED-150, SINGLE ARM, W/O LUMINAIRE - 46	EA	1	\$ 28,085.05	\$ 28,085.05
0649 31108	MAST ARM, F&I, WIND SPEED-150, SINGLE ARM, WITH LUMINAIRE - 60	EA	1	\$ 37,000.00	\$ 37,000.00
0649 36300	MAST ARM, REMOVE SHALLOW FOUNDATION, BOLT ON ATTACHMENT	EA	2	\$ 2,456.06	\$ 4,912.12
0650 1 14	TRAFFIC SIGNAL, F&I, 3 SECTION, 1 WAY, ALUMINUM	AS	6	\$ 1,012.97	\$ 6,077.82
0650 1 18	TRAFFIC SIGNAL, F&I, 5 SECTION STRAIGHT, 1 WAY, ALUMINUM	AS	1	\$ 1,710.00	\$ 1,710.00
0650 1 70	TRAFFIC SIGNAL, RELOCATE	AS	2	\$ 220.34	\$ 440.68
0653 1 12	PEDESTRIAN SIGNAL, F&I, LED COUNTDOWN, 2 WAY	AS	2	\$ 1,190.37	\$ 2,380.74
0660 2 102	LOOP ASSEMBLY, F&I, TYPE B	AS	12	\$ 664.18	\$ 7,970.16
0660 2 106	LOOP ASSEMBLY, F&I, TYPE F	AS	9	\$ 1,011.30	\$ 9,101.70
0665 1 11	PEDESTRIAN DETECTOR, F&I, STANDARD	EA	3	\$ 204.18	\$ 612.54
0670 5400	TRAFFIC CONTROLLER ASSEMBLY, MODIFY	AS	1	\$ 3,498.67	\$ 3,498.67
0682 1 400	ITS CCTV CAMERA, RELOCATE	EA	1	\$ 2,495.00	\$ 2,495.00
0700 5 22	INTERNALLY ILLUMINATED SIGN, F&I, OVERHEAD MOUNT, 12-18 SF	EA	2	\$ 3,363.93	\$ 6,727.86
<b>Lighting</b>					
0630 2 11	CONDUIT, F&I, OPEN TRENCH	LF	3525	\$ 5.67	\$ 19,986.75
0630 2 12	CONDUIT, F&I, DIRECTIONAL BORE	LF	1505	\$ 24.37	\$ 36,676.85
0635 2 11	PULL & SPLICE BOX, F&I, 13"X24" COVER SIZE	EA	42	\$ 547.99	\$ 23,015.58
0715 1 12	LIGHTING CONDUCTORS, F&I, INSULATED, NO. 8-6	LF	19540	\$ 1.03	\$ 20,126.20
0715 1 13	LIGHTING CONDUCTORS, F&I, INSULATED, NO. 4-2	LF	160	\$ 1.85	\$ 296.00
0715 1 60	LIGHTING CONDUCTORS, REMOVE & DISPOSE, CONTRACTOR OWNS	LF	1395	\$ 0.20	\$ 279.00
0715 7 11	LOAD CENTER, F&I SECONDARY VOLTAGE	EA	1	\$ 12,036.74	\$ 12,036.74
0715 11 118	LUMINAIRE, F&I, ROADWAY, FLOOD	EA	4	\$ 1,190.51	\$ 4,762.04
0715-516-115	LIGHT POLE COMPLETE-SPECIAL DESIGN, F&I, POLE TOP MOUNT, ALUMINUM, CUSTOM HEIGHT	EA	31	\$ 6,450.00	\$ 199,950.00
0715-540-000	LIGHT POLE COMPLETE-SPECIAL DESIGN, RELOCATE	EA	5	\$ 1,750.00	\$ 8,750.00
0715-550-000	LIGHT POLE COMPLETE-SPECIAL DESIGN, REMOVE	EA	3	\$ 303.70	\$ 911.10

**OPINION OF PROBABLE CONSTRUCTION COST  
(Bid Plans December 2015)**

CENTRAL AVE IMPROVEMENTS					
ITEM NO.	DESCRIPTION	UNIT	QTY	UNIT PRICE	AMOUNT
<b>Utilities</b>					
1050 11222	2-4.9" PVC Pipe (F&I) - PROPOSED 2" & 4"	LF	125	\$ 69.45	\$ 8,681.25
1050 11223	5-7.9" PVC Pipe (F&I) - PROPOSED 6"	LF	625	\$ 74.17	\$ 46,356.25
1050 11224	8-19.9" PVC Pipe (F&I) - PROPOSED 8", 12", 16", 18"	LF	2010	\$ 85.80	\$ 172,458.00
1050 11424	8-19.9" DI PIPE (F&I) - PROPOSED 8"	LF	80	\$ 88.64	\$ 7,091.20
1050 11324	8-19.9" PE Pipe (F&I) - PROPOSED 10" (Directional Drill)	LF	375	\$ 124.43	\$ 46,661.25
1050 18002	2-4.9" Plug & Out of Service - 2" & 4"	LF	1021	\$ 12.00	\$ 12,252.00
1050 18003	5-7.9" Plug & Out of Service - 6"	LF	1235	\$ 12.44	\$ 15,363.40
1050 18004	8-19.9" Plug & Out of Service - 16"	LF	120	\$ 13.33	\$ 1,599.60
1080 11207	UTILITY FIXTURES, F&I, 2-4.9", LINE STOP	EA	1	\$ 2,544.00	\$ 2,544.00
1080 11307	UTILITY FIXTURES, F&I, 5-7.9", LINE STOP	EA	4	\$ 4,383.13	\$ 17,532.52
1080 11407	UTILITY FIXTURES, F&I, 8-19.9", LINE STOP	EA	3	\$ 5,312.21	\$ 15,936.63
1055 11414	UTILITY FITTING, F&I, DI/CI, ELBOW, 8-19.9"	EA	65	\$ 1,279.75	\$ 83,183.75
1055 11424	UTILITY FITTINGS, F&I, DI/CI, TEE, 8 - 19.9"	EA	17	\$ 1,376.91	\$ 23,407.47
1055 11454	8-19" UTILITY FITTINGS (F&I) PLUG/CAP	EA	2	\$ 712.37	\$ 1,424.74
1080 11404	UTIL FIXT, F&I, 8-19.9", VALVE ASSEMBLY	EA	32	\$ 3,212.59	\$ 102,802.88
1080 11409	UTIL FIXT, F&I, 8-19.9", MECH JONT RESTR	EA	260	\$ 264.24	\$ 68,702.40
1644113 08	FIRE HYDRANT, F&I, STD, 2 HOSE, 1 PUMP, 6"	EA	5	\$ 4,187.06	\$ 20,935.30
-	Long Water Services	EA	8	\$ 1,750.00	\$ 14,000.00
-	Short Water Services	EA	10	\$ 750.00	\$ 7,500.00
<b>Landscaping</b>					
751-38-11	BENCH	EA	3	\$ 1,500.00	\$ 4,500.00
<i>SINGLE TRUNK PALMS - LARGE PLANTS</i>					
580-1-2	ARCHONTOPHOENIX CUNNINGHAMIANA (PICCABEEN PALM)	EA	29	\$ 1,200.00	\$ 34,800.00
580-1-2	ROYSTONEA REGIA (ROYAL PALM)	EA	63	\$ 1,500.00	\$ 94,500.00
580-1-2	ADONIDIA MERRILLII (CHRISTMAS PALM)	EA	45	\$ 700.00	\$ 31,500.00
<i>TREES - LARGE PLANS</i>					
580-1-2	QUERCUS VIRGINIANA 'HIGH RISE' (HIGH RISE SOUTHERN LIVE OAK)	EA	17	\$ 2,000.00	\$ 34,000.00
580-1-2	TAXODIUM DISTICHUM (BALD CYPRESS)	EA	9	\$ 1,050.00	\$ 9,450.00
<i>SHRUBS - SMALL AND LARGE PLANTS</i>					
580-1-2	CHRYSOBALANUS ICACO 'RED TIP' (RED TIP COCOPLUM)	EA	232	\$ 45.00	\$ 10,440.00
580-1-1	DIANELLA TASMANICA 'VARIEGATA' (FLAX LILY)	EA	675	\$ 18.00	\$ 12,150.00
580-1-1	CODIAEUM VARIEGATUM 'MAMMEY' (CROTON)	EA	692	\$ 15.00	\$ 10,380.00
580-1-1	SCHEFFLERA ARBORICOLA 'TRINETTE' (VARIEGATED SCHEFFLERA)	EA	505	\$ 11.00	\$ 5,555.00
580-1-1	DURANTA REPANS 'GOLD MOUND' (GOLDEN DEWDROP DURANTA)	EA	101	\$ 15.00	\$ 1,515.00
580-1-1	FICUS MICROCARPA 'GREEN ISLAND' (GREEN ISLAND FICUS)	EA	3019	\$ 15.00	\$ 45,285.00
580-1-1	JUNIPERUS CHINENSIS 'PARSONII' (CHINESE JUNIPER)	EA	488	\$ 13.50	\$ 6,588.00
580-1-1	NEOREGELIA X 'ROYAL BURGANDY' (ROYAL BURGANDY BROMELIAD)	EA	186	\$ 25.00	\$ 4,650.00
<i>ANNUALS</i>					
580-1-1	ANNUALS	EA	308	\$ 7.00	\$ 2,156.00
<i>ORNAMENTAL GRASSES - SMALL PLANTS</i>					
580-1-1	MUHLENBERGIA CAPILLARIS (PINK MUHLY)	EA	503	\$ 5.00	\$ 2,515.00
580-1-1	SPARTINA BAKERI (SAND CORD GRASS)	EA	156	\$ 6.00	\$ 936.00
<i>SOIL AMENDMENTS</i>					
-	BOLD & GOLD	CY	48	\$ 53.00	\$ 2,544.00
<b>Irrigation</b>					
0590 70	IRRIGATION SYSTEM	LS	1	\$ 82,000.00	\$ 82,000.00
<b>CENTRAL AVE IMPROVEMENTS</b>					
<b>SUBTOTAL (DOES NOT INCLUDE MOBILIZATION &amp; MOT)</b>					<b>\$ 3,277,525.10</b>
<b>MOBILIZATION &amp; MOT</b>					<b>\$ 458,854.00</b>
<b>O.P.C. SUBTOTAL</b>					<b>\$ 3,736,379.10</b>
<b>10% Contingency</b>					<b>\$ 373,637.91</b>
<b>ESTIMATED O.P.C. TOTAL</b>					<b>\$ 4,110,017.01</b>

The Engineer has no control over the cost of labor, materials, equipment, or over the Contractor's methods of determining prices or over competitive bidding or market conditions. Opinions of probable costs provided herein are based on the information known to Engineer at this time and represent only the Engineer's judgment as a design professional familiar with the construction industry. The Engineer cannot and does not guarantee that proposals, bids, or actual construction costs will not vary from its opinions of probable costs.

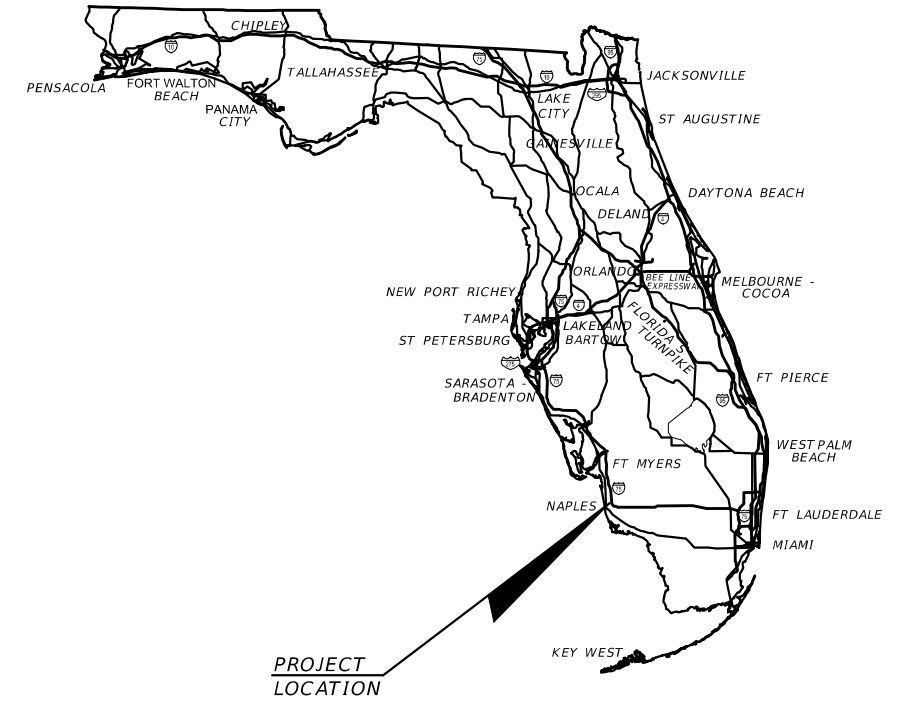


CONTRACT PLANS

CITY OF NAPLES  
COLLIER COUNTY

CENTRAL AVENUE IMPROVEMENTS

LANDSCAPE PLANS



Sheet List Table	
Sheet Number	Sheet Title
TM-0	COVER SHEET
TM-1 - 6	TREE MITIGATION PLAN
TM-7 - 8	TREE MITIGATION NOTES
LD-1 - 6	LANDSCAPE PLAN
LD-7	LANDSCAPE DETAILS
LD-8 - 10	LANDSCAPE NOTES
LD-11	HARDSCAPE DETAILS
LD-12	PATIO SEATING AREA (ALTERNATE)
IR-1 - 6	IRRIGATION PLAN
IR-7	IRRIGATION NOTES
IR-8	IRRIGATION SCHEDULE
IR-9 - 10	IRRIGATION DETAILS

LANDSCAPE SHOP DRAWINGS  
TO BE SUBMITTED TO:  
JAMES R. PANKONIN, PLA  
1777 MAIN STREET, SUITE 200  
SARASOTA FL 34236  
PHONE (941) 379-7600 FAX (941) 379-4352

PLANS PREPARED BY:  
**Kimley»Horn**  
1777 MAIN STREET, SUITE 200  
SARASOTA, FL 34236  
PHONE (941) 379-7600  
CERTIFICATE OF AUTHORIZATION: 00000696

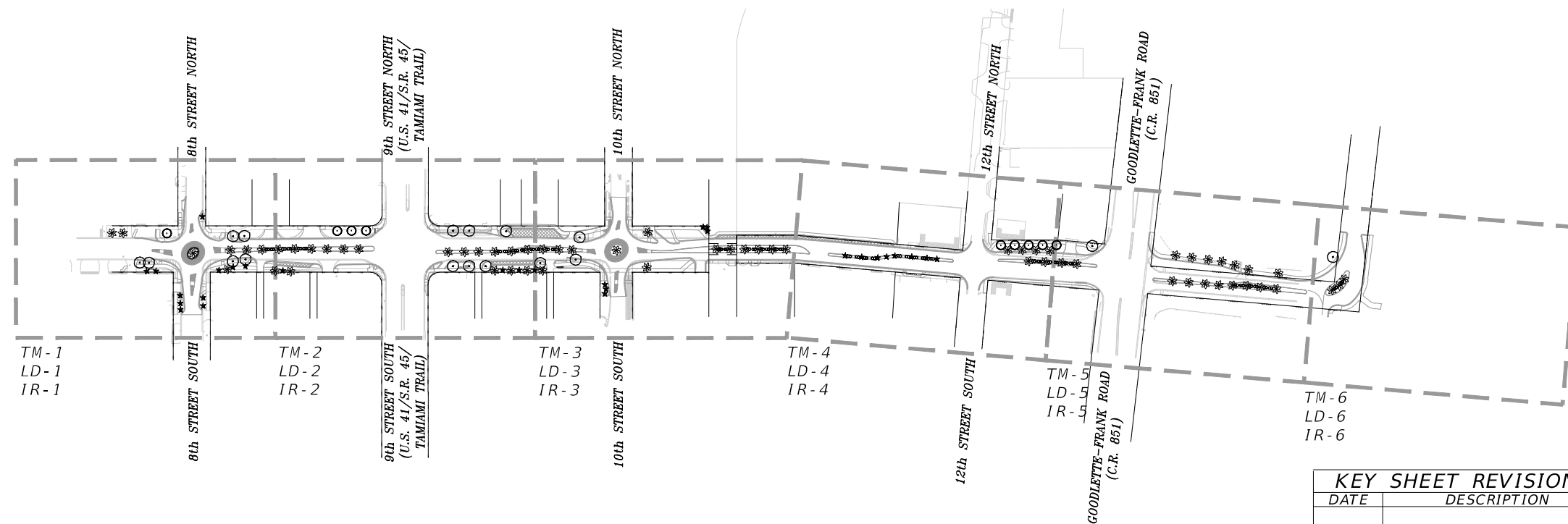
NOTE: THE SCALE OF THESE PLANS MAY  
HAVE CHANGED DUE TO REPRODUCTION.

BID PLANS  
DECEMBER 2015

LANDSCAPE PLANS  
ARCHITECT OF RECORD: JAMES R. PANKONIN, PLA

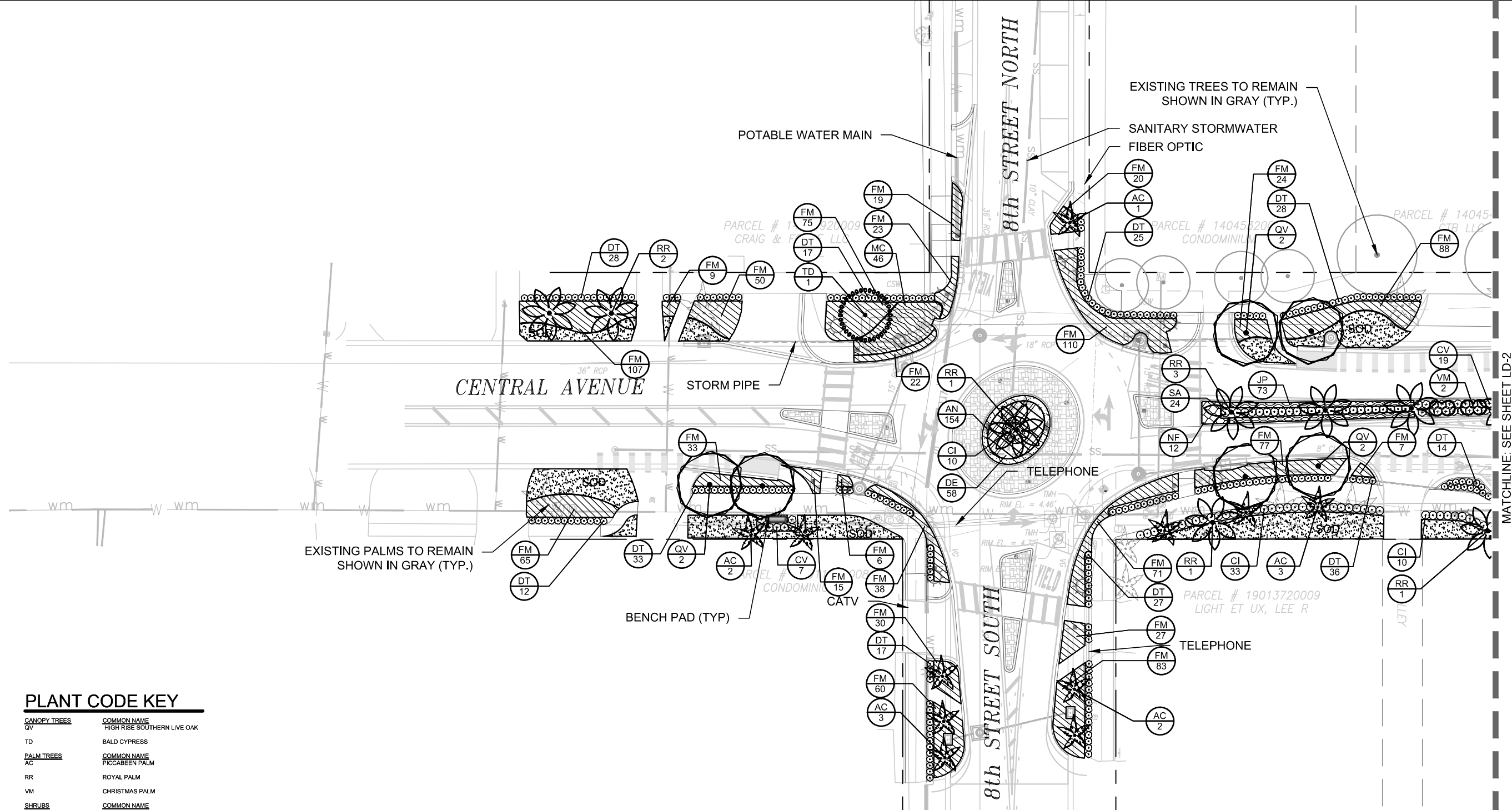
PLA NO.: 6666900

FISCAL YEAR	SHEET NO.
16	TM-0



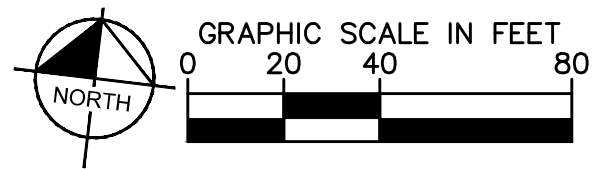
KEY SHEET REVISIONS	
DATE	DESCRIPTION

Plotted By: Dean, Ed Sheet: Sst: Main Street Segment 1&3 Layout: LD-2 January 06, 2016 05:00:22pm K:\sar\_roadway\048320.002 central ave improvements\URG\CADD\plan sheets\1-1 LANDSCAPE PLAN.dwg



**PLANT CODE KEY**

<b>CANOPY TREES</b>	<b>COMMON NAME</b>
QV	HIGH RISE SOUTHERN LIVE OAK
TD	BALD CYPRESS
<b>PALM TREES</b>	<b>COMMON NAME</b>
AC	PICCABEEN PALM
RR	ROYAL PALM
VM	CHRISTMAS PALM
<b>SHRUBS</b>	<b>COMMON NAME</b>
CI	RED TIP COCOPLUM
CV	MAMMEY CROTON
DT	FLAX LILY
SA	VARIEGATED SCHEFFLERA
<b>SHRUB AREAS</b>	<b>COMMON NAME</b>
DE	GOLDEN DEWDROP DURANTA
FM	GREEN ISLAND FICUS
JP	CHINESE JUNIPER
NF	ROYAL BURGANDY BROMELIAD
<b>ANNUALS</b>	<b>COMMON NAME</b>
AN	ANNUALS
<b>ORNAMENTAL GRASSES</b>	<b>COMMON NAME</b>
MC	PINK MUHLI
SB	SAND CORD GRASS
<b>SOD/SEED</b>	<b>COMMON NAME</b>
SS	ST. AUGUSTINE GRASS



CALL 48 HOURS BEFORE YOU DIG

**811**

IT'S THE LAW!  
DIAL 811

Know what's below.  
Call before you dig.

SUNSHINE STATE ONE CALL OF FLORIDA, INC.

REVISIONS	
DATE	DESCRIPTION
01/06/16	PLANT SUBSTITUTION - MAMMEY CROTON

**Kimley»Horn**

JAMES R. PANKONIN, RLA  
FLORIDA RLA LICENSE NUMBER 48221  
1777 MAIN STREET, SUITE 300  
SARASOTA, FLORIDA 34236  
PHONE (941) 379-7600  
CERTIFICATE OF AUTHORIZATION: 00000696

CITY OF NAPLES

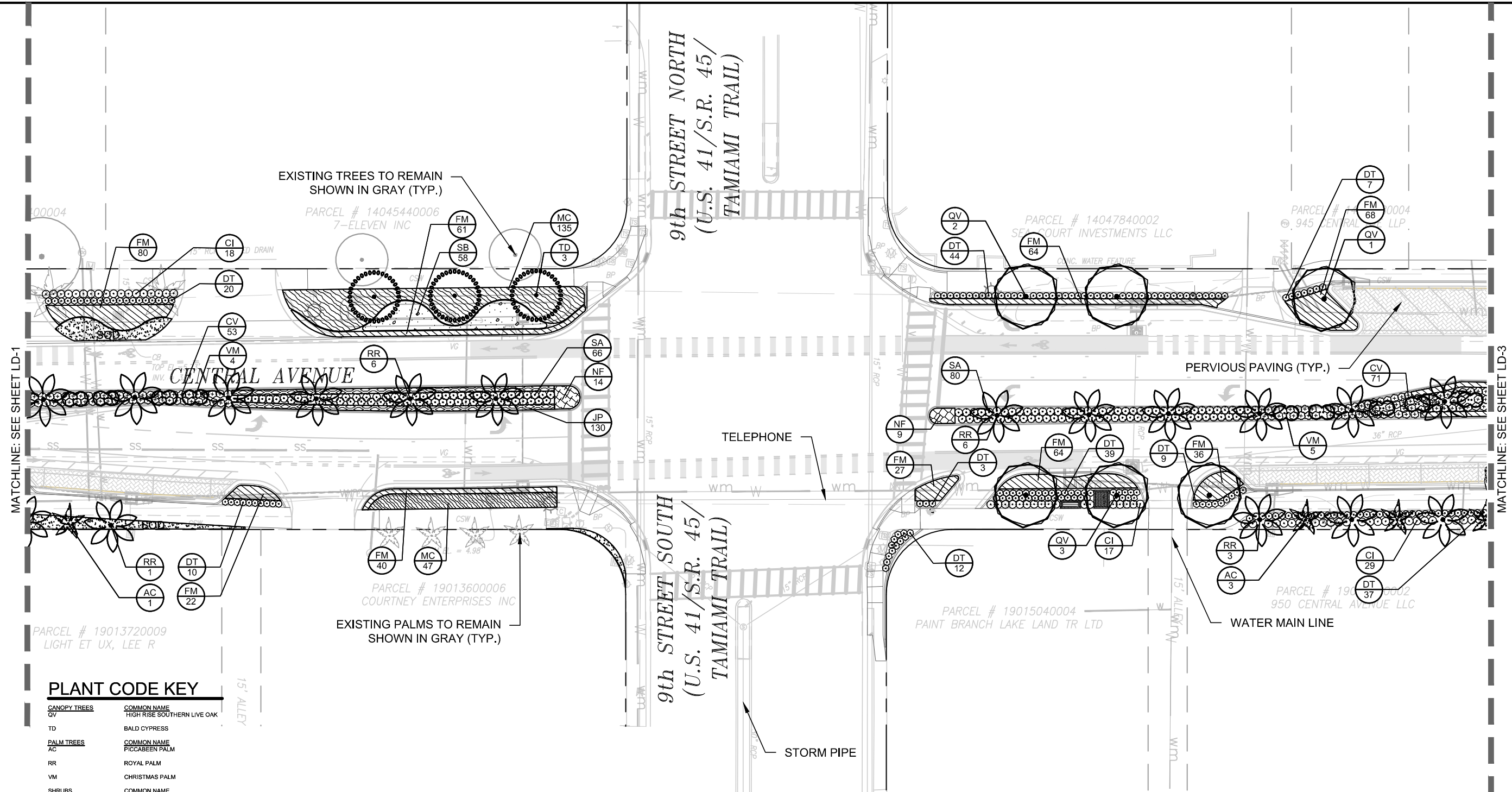
CENTRAL AVENUE

LANDSCAPE PLAN

SHEET NO.

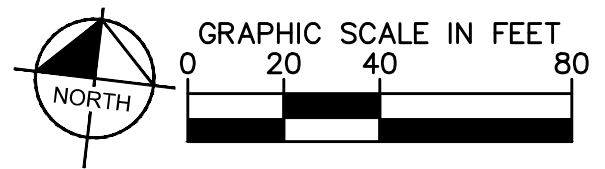
LD-1

Plotted By: Dean, Ed Sheet: Sst: Main Street Segment 1&3 Layout: LD-3 January 06, 2016 05:00:45pm k:\sar\_roadway\048320.002 central ave improvements\URC\CADD\plan sheets\1-1 LANDSCAPE PLAN.dwg



**PLANT CODE KEY**

CANOPY TREES	COMMON NAME
QV	HIGH RISE SOUTHERN LIVE OAK
TD	BALD CYPRESS
PALM TREES	COMMON NAME
AC	PICCABEEN PALM
RR	ROYAL PALM
VM	CHRISTMAS PALM
SHRUBS	COMMON NAME
CI	RED TIP COCCOPLUM
CV	MAMMEY CROTON
DT	FLAX LILY
SA	VARIEGATED SCHEFFLERA
SHRUB AREAS	COMMON NAME
DE	GOLDEN DEWDROP DURANTA
FM	GREEN ISLAND FICUS
JP	CHINESE JUMPER
NF	ROYAL BURGANDY BROMELIAD
ANNUALS	COMMON NAME
AN	ANNUALS
ORNAMENTAL GRASSES	COMMON NAME
MC	PINK MUHLY
SB	SAND CORD GRASS
SOD/SEED	COMMON NAME
SS	ST. AUGUSTINE GRASS



CALL 48 HOURS BEFORE YOU DIG

**811**

IT'S THE LAW!  
DIAL 811

Know what's below.  
Call before you dig.

SUNSHINE STATE ONE CALL OF FLORIDA, INC.

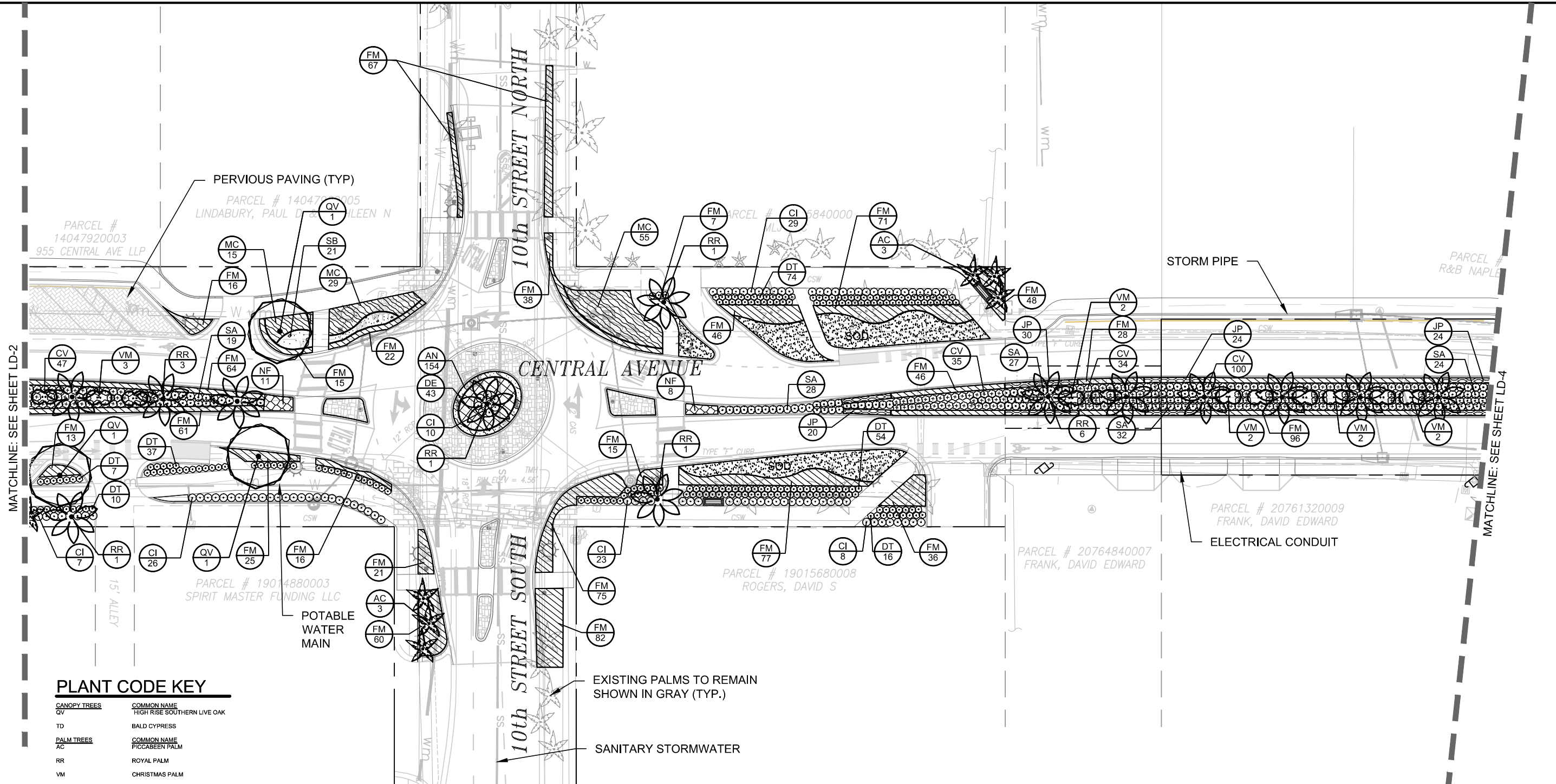
REVISIONS			
DATE	DESCRIPTION	DATE	DESCRIPTION
01/06/16	PLANT SUBSTITUTION - MAMMEY CROTON		

**Kimley»Horn**

JAMES R. PANKONIN, RLA  
FLORIDA RLA LICENSE NUMBER 48221  
1777 MAIN STREET, SUITE 300  
SARASOTA, FLORIDA 34236  
PHONE (941) 379-7600  
CERTIFICATE OF AUTHORIZATION: 00000696

CITY OF NAPLES	LANDSCAPE PLAN	SHEET NO. LD-2
CENTRAL AVENUE		

Plotted By: Dean, Ed Sheet: Sst: Main Street Segment 1&3 Layout: LD-4 January 06, 2016 05:01:14pm K:\var\_roadway\048320.002 central ave improvements.URG\CADD\plan sheets\LD-1 LANDSCAPE PLAN.dwg



MATCHLINE: SEE SHEET LD-2

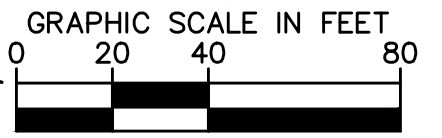
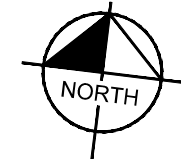
MATCHLINE: SEE SHEET LD-4

**PLANT CODE KEY**

CANOPY TREES	COMMON NAME
QV	HIGH RISE SOUTHERN LIVE OAK
TD	BALD CYPRESS
PALM TREES	COMMON NAME
AC	PICCABEEN PALM
RR	ROYAL PALM
VM	CHRISTMAS PALM
SHRUBS	COMMON NAME
CI	RED TIP COCOPLUM
CV	MAMMEY CROTON
DT	FLAX LILY
SA	VARIEGATED SCHEFFLERA
SHRUB AREAS	COMMON NAME
DE	GOLDEN DEWDROP DURANTA
FM	GREEN ISLAND FICUS
JP	CHINESE JUNIPER
NF	ROYAL BURGANDY BROMELIAD
ANNUALS	COMMON NAME
AN	ANNUALS
ORNAMENTAL GRASSES	COMMON NAME
MC	PINK MUHLY
SB	SAND CORD GRASS
SOD/SEED	COMMON NAME
SS	ST. AUGUSTINE GRASS

EXISTING PALMS TO REMAIN SHOWN IN GRAY (TYP.)

SANITARY STORMWATER



CALL 48 HOURS BEFORE YOU DIG

**811**

IT'S THE LAW!  
DIAL 811

Know what's below.  
Call before you dig.

SUNSHINE STATE ONE CALL OF FLORIDA, INC.

REVISIONS	
DATE	DESCRIPTION
01/06/16	PLANT SUBSTITUTION - MAMMEY CROTON

**Kimley»Horn**

JAMES R. PANKONIN, RLA  
FLORIDA RLA LICENSE NUMBER 48221  
1777 MAIN STREET, SUITE 300  
SARASOTA, FLORIDA 34236  
PHONE (941) 379-7600  
CERTIFICATE OF AUTHORIZATION: 00000696

CITY OF NAPLES

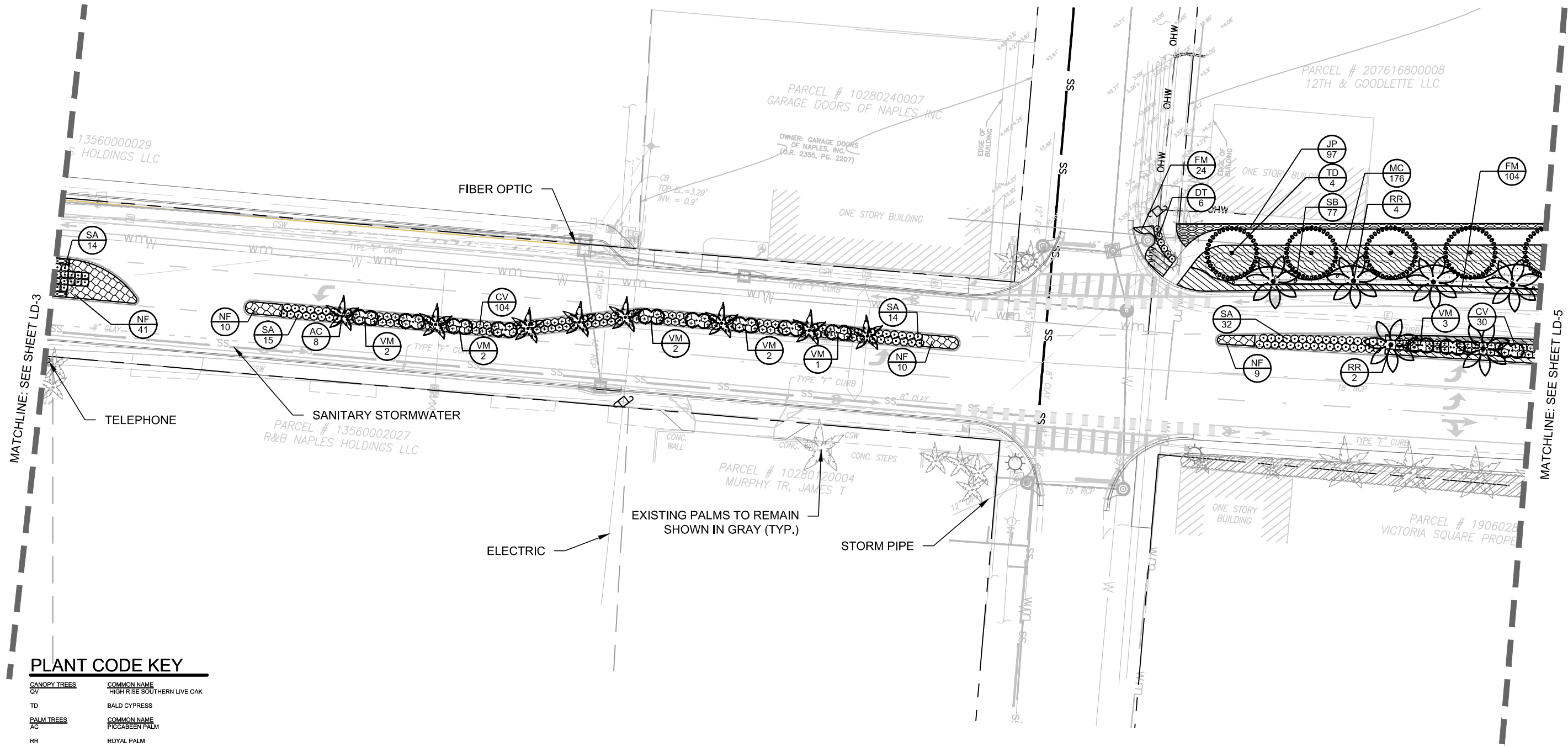
CENTRAL AVENUE

LANDSCAPE PLAN

SHEET NO.

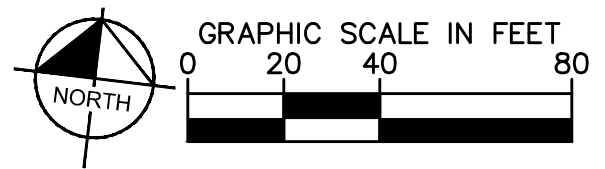
LD-3

Plotted By: Dean, Ed Sheet: Sst: Main Street Segment 1&3 Layout: LD-5 January 06, 2016 05:01:36pm K:\s\roadway\048320.002 central ave improvements\URC\CADD\plan sheets\1 LANDSCAPE PLAN.dwg



**PLANT CODE KEY**

<b>CANOPY TREES</b>	<b>COMMON NAME</b>
QV	HIGH RISE SOUTHERN LIVE OAK
TD	BALD CYPRESS
<b>PALM TREES</b>	<b>COMMON NAME</b>
AC	PICCABEEN PALM
RR	ROYAL PALM
VM	CHRISTMAS PALM
<b>SHRUBS</b>	<b>COMMON NAME</b>
CI	RED TIP COCOPLUM
CV	MAMMEY CROTON
DT	FLAX LILY
SA	VARIEGATED SCHEFFLERA
<b>SHRUB AREAS</b>	<b>COMMON NAME</b>
DE	GOLDEN DEWDROP DURANTA
FM	GREEN ISLAND FICUS
JP	CHINESE JUNIPER
NF	ROYAL BURGANDY BROMELIAD
<b>ANNUALS</b>	<b>COMMON NAME</b>
AN	ANNUALS
<b>ORNAMENTAL GRASSES</b>	<b>COMMON NAME</b>
MC	PINK MUHLY
SB	SAND CORD GRASS
<b>SOD/SEED</b>	<b>COMMON NAME</b>
SS	ST. AUGUSTINE GRASS



CALL 48 HOURS BEFORE YOU DIG

**811**

IT'S THE LAW!  
DIAL 811

Know what's below.  
Call before you dig.

SUNSHINE STATE ONE CALL OF FLORIDA, INC.

REVISIONS			
DATE	DESCRIPTION	DATE	DESCRIPTION
01/06/16	PLANT SUBSTITUTION - MAMMEY CROTON		

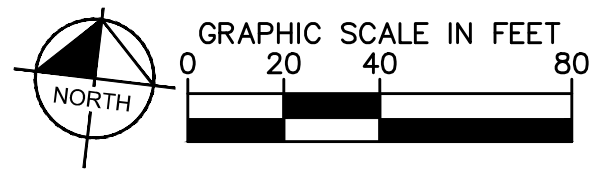
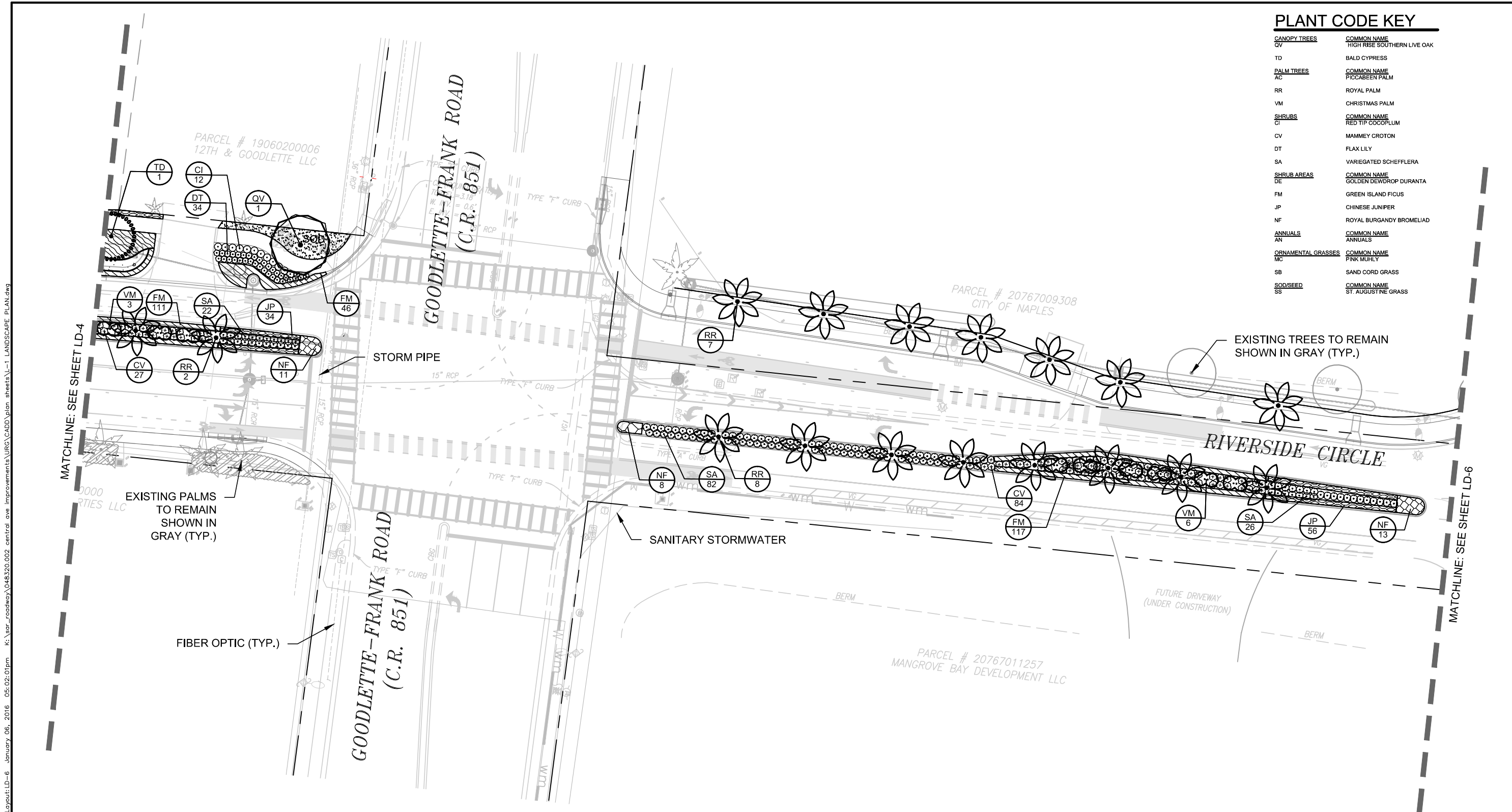
**Kimley»Horn**

JAMES R. PANKONIN, RLA  
FLORIDA RLA LICENSE NUMBER 48221  
1777 MAIN STREET, SUITE 300  
SARASOTA, FLORIDA 34236  
PHONE (941) 379-7600  
CERTIFICATE OF AUTHORIZATION: 00000696

CITY OF NAPLES	<b>LANDSCAPE PLAN</b>	SHEET NO.  LD-4
CENTRAL AVENUE		

**PLANT CODE KEY**

CANOPY TREES	
QV	HIGH RISE SOUTHERN LIVE OAK
TD	BALD CYPRESS
PALM TREES	
AC	PICCAEEN PALM
RR	ROYAL PALM
VM	CHRISTMAS PALM
SHRUBS	
CI	COMMON NAME RED TIP COCOPLUM
CV	MAMMEY CROTON
DT	FLAX LILY
SA	VARIEGATED SCHEFFLERA
SHRUB AREAS	
DE	COMMON NAME GOLDEN DEWDROP DURANTA
FM	GREEN ISLAND FICUS
JP	CHINESE JUNIPER
NF	ROYAL BURGANDY BROMELIAD
ANNUALS	
AN	COMMON NAME ANNUALS
ORNAMENTAL GRASSES	
MC	COMMON NAME PINK MUHLY
SB	SAND CORD GRASS
SOD/SEED	
SS	COMMON NAME ST. AUGUSTINE GRASS



CALL 48 HOURS BEFORE YOU DIG

**811**

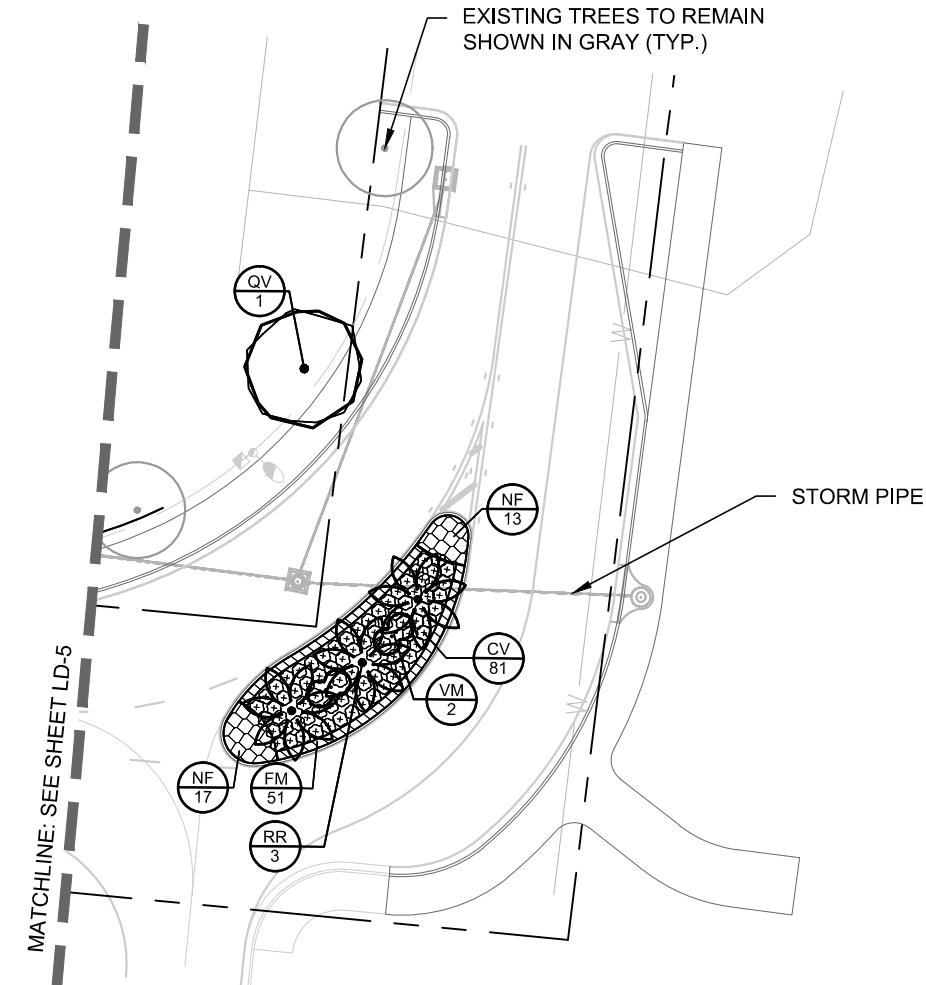
IT'S THE LAW!  
DIAL 811

Know what's below.  
Call before you dig.

SUNSHINE STATE ONE CALL OF FLORIDA, INC.

<p>Plotted By: Dean, Ed Sheet: Sat. Main Street Segment 1&amp;3 Layout: LD-6 January 06, 2016 05:02:01pm K:\var_roadway\048320.002 central ave improvements\URC\CADD\plan sheets\LD-1 LANDSCAPE PLAN.dwg</p>		<p>REVISIONS</p> <table border="1"> <thead> <tr> <th>DATE</th> <th>DESCRIPTION</th> <th>DATE</th> <th>DESCRIPTION</th> </tr> </thead> <tbody> <tr> <td>01/06/16</td> <td>PLANT SUBSTITUTION - MAMMEY CROTON</td> <td></td> <td></td> </tr> </tbody> </table>		DATE	DESCRIPTION	DATE	DESCRIPTION	01/06/16	PLANT SUBSTITUTION - MAMMEY CROTON			<p><b>Kimley»Horn</b></p> <p>JAMES R. PANKONIN, RLA FLORIDA RLA LICENSE NUMBER 48221 1777 MAIN STREET, SUITE 300 SARASOTA, FLORIDA 34236 PHONE (941) 379-7600 CERTIFICATE OF AUTHORIZATION: 00000696</p>		<p>CITY OF NAPLES</p> <p>CENTRAL AVENUE</p>		<p>LANDSCAPE PLAN</p>		<p>SHEET NO.</p> <p>LD-5</p>	
DATE	DESCRIPTION	DATE	DESCRIPTION																
01/06/16	PLANT SUBSTITUTION - MAMMEY CROTON																		

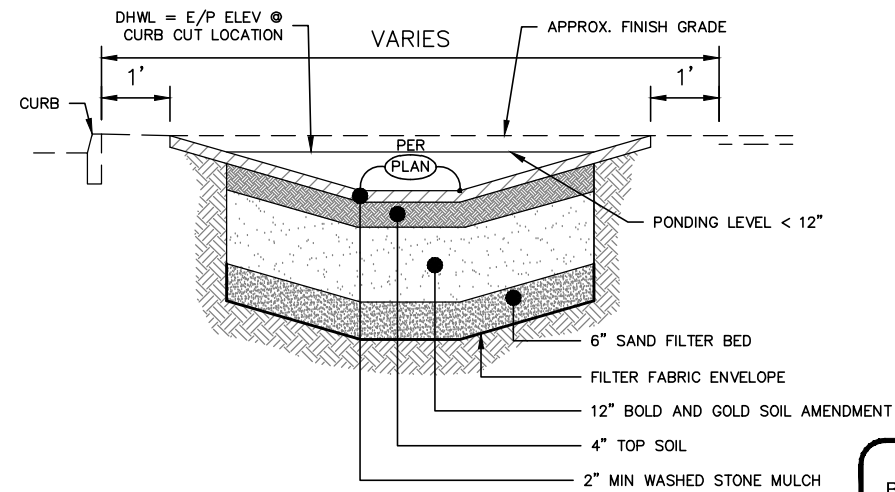
Plotted By: Dean, Ed Sheet: Sat: Main Street Segment 1&3 Layout: LD-7 January 06, 2016 05:02:26pm K:\sar\_roadway\048320\02 central ave improvements\UR\CAAD\plan sheets\1-1 LANDSCAPE PLAN.dwg



### PLANT SCHEDULE

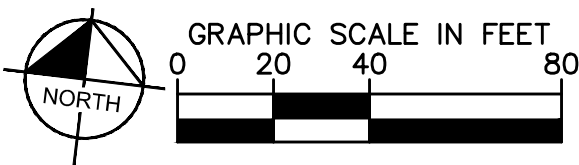
CANOPY TREES	CODE	QTY	BOTANICAL NAME	COMMON NAME	CONT	CAL	SIZE
	QV	17	QUERCUS VIRGINIANA 'HIGH RISE'	HIGH RISE SOUTHERN LIVE OAK	F.G.	5" CAL	18' HT, 8' SPRD.
	TD	9	TAXODIUM DISTICHUM	BALD CYPRESS	F.G.	4" CAL MIN	14' HT MIN
PALM TREES	CODE	QTY	BOTANICAL NAME	COMMON NAME	CONT	CAL	SIZE
	AC	29	ARCHONTOPHOENIX CUNNINGHAMIANA	PICCABEEN PALM	F.G.	SINGLE	20' OA
	RR	63*	ROYSTONIA REGIA	ROYAL PALM	F.G.	HEAVY	+/- 20' GW (MATCH EXISTING)
	VM	45	ADONIDIA MERRILLII	CHRISTMAS PALM	F.G.	DOUBLE, HEAVY	16'-18" OA
SHRUBS	CODE	QTY	BOTANICAL NAME	COMMON NAME	CONT	SPACING	SIZE
	CI	232	CHRYSOBALANUS ICACO 'RED TIP'	RED TIP COCOPLUM	7 GAL	SEE PLAN	36" HT X 24" SPR MIN
	CV	692	CODIAEUM VARIEGATUM 'MAMMEY'	MAMMEY CROTON	3 GAL	SEE PLAN	18" FULL
	DT	675	DIANELLA TASMANICA 'VARIEGATA'	FLAX LILY	3 GAL	SEE PLAN	16'-18" HT X 16" SPR
	SA	505	SCHEFFLERA ARBORICOLA 'TRINETTE'	VARIEGATED SCHEFFLERA	3 GAL	SEE PLAN	18" FULL
SHRUB AREAS	CODE	QTY	BOTANICAL NAME	COMMON NAME	CONT	SIZE	SPACING
	DE	101	DURANTA REPANS 'GOLD MOUND'	GOLDEN DEWDROP DURANTA	3 GAL	12" X 12" MIN	30" o.c.
	FM	3,019	FICUS MICROCARPA 'GREEN ISLAND'	GREEN ISLAND FICUS	3 GAL	12"-14" FULL MIN	24" o.c.
	JP	488	JUNIPERUS CHINENSIS 'PARSONII'	CHINESE JUNIPER	3 GAL	10"-12" X 14"-16"	24" o.c.
	NF	186	NEOREGELIA X 'ROYAL BURGANDY'	ROYAL BURGANDY BROMELIAD	3 GAL	8" FULL	30" o.c.
ANNUALS	CODE	QTY	BOTANICAL NAME	COMMON NAME	CONT	SIZE	SPACING
	AN	308	ANNUALS	ANNUALS	1 GAL	12" HT MIN	12" o.c.
ORNAMENTAL GRASSES	CODE	QTY	BOTANICAL NAME	COMMON NAME	CONT	SIZE	SPACING
	MC	503	MUHLENBERGIA CAPILLARIS	PINK MUHLY	1 GAL	24" HT MIN	36" o.c.
	SB	156	SPARTINA BAKERI	SAND CORD GRASS	1 GAL	24" HT MIN	36" o.c.
SOD/SEED	CODE	QTY	BOTANICAL NAME	COMMON NAME	CONT	SIZE	SPACING
	SS		STENOTAPHRUM SECUNDATUM	ST. AUGUSTINE GRASS	SOD		

\* PROVIDE BID PRICING FOR 26 ROYAL PALMS AS SPECIFIED AND 37 RELOCATED ROYAL PALMS PER TREE MITIGATION PLANS. PROVIDE ALTERNATE PRICING FOR 63 ROYAL PALMS AS SPECIFIED.



### BIOFILTRATION SWALE

NTS



CALL 48 HOURS BEFORE YOU DIG

**811**

IT'S THE LAW!  
DIAL 811

Know what's below.  
Call before you dig.

SUNSHINE STATE ONE CALL OF FLORIDA, INC.

REVISIONS			
DATE	DESCRIPTION	DATE	DESCRIPTION
01/06/16	PLANT SUBSTITUTION - MAMMEY CROTON		

**Kimley»Horn**

JAMES R. PANKONIN, RLA  
FLORIDA RLA LICENSE NUMBER 48221  
1777 MAIN STREET, SUITE 300  
SARASOTA, FLORIDA 34236  
PHONE (941) 379-7600  
CERTIFICATE OF AUTHORIZATION: 00000696

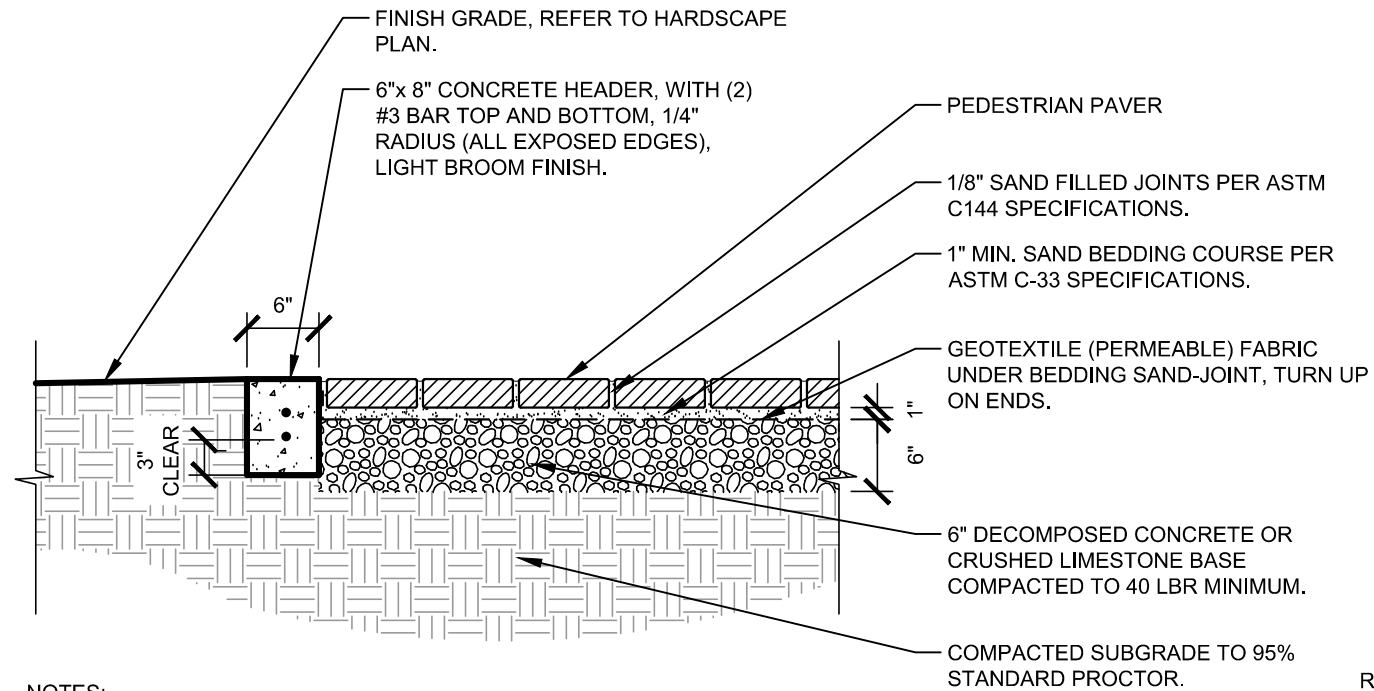
CITY OF NAPLES

CENTRAL AVENUE

*LANDSCAPE PLAN & SCHEDULE*

SHEET NO.  
LD-6

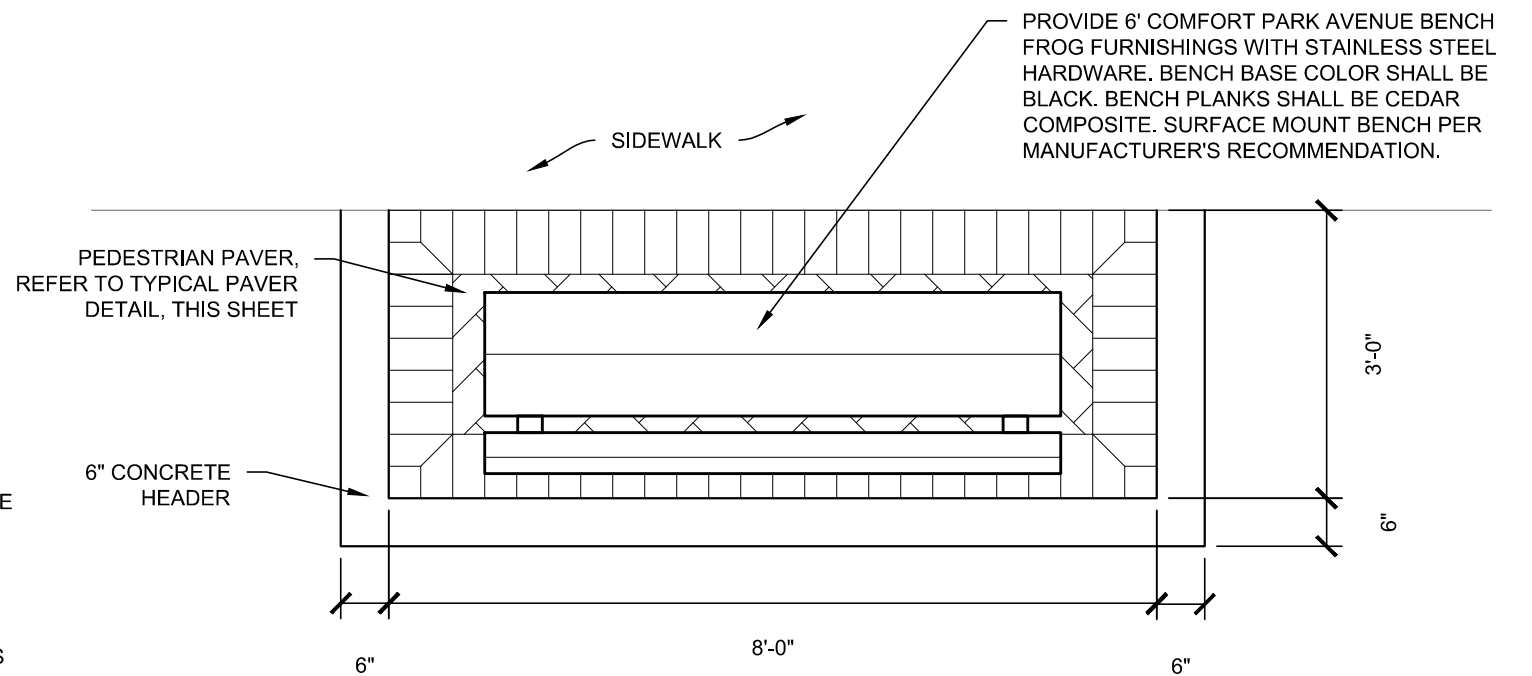
Plotted By: Dean, Ed Sheet: Sst: Main Street Segment 1&3 Layout: LD-11 HARDSCAPE DETAILS January 06, 2016 05:03:00pm K:\ar\_roadway\046320.002 central ave improvements\URGC\CADD\plan sheets\LD-11 STARBUCKS ALT PLAN.dwg



**NOTES:**

1. CONTRACTOR TO INSTALL ALL PAVERS PER MANUFACTURER'S SPECIFICATIONS.
2. ALL INTERLOCKING CONCRETE PAVERS SHALL MEET THE REQUIREMENTS IN ASTM C936 "STANDARD SPECIFICATIONS FOR SOLID INTERLOCKING CONCRETE PAVING UNITS", AND SHALL COMPLY WITH APPLICABLE ICPI (INTERLOCKING CONCRETE PAVEMENT INSTITUTE) TECHNICAL SPECIFICATIONS.
3. ALL AREAS OF INTERLOCKING CONCRETE PAVERS, AS SHOWN ON THE PLANS SHALL BE SET WITH FLUSH TOP SURFACE AND SHALL MAINTAIN A MINIMUM SLOPE OF 0.5%, UNLESS OTHERWISE NOTED ON THE PLANS OR DETAILS.
4. BEDDING SAND SHALL CONFORM TO THE GRADING REQUIREMENTS OF ASTM C33. MASON SAND IS NOT ACCEPTABLE. ALL BEDDING SAND SHALL BE SCREENED TO AN EVEN THICKNESS.
5. ALL AREAS OF INTERLOCKING CONCRETE PAVERS SHALL COMPLY WITH CURRENT ADA (AMERICANS WITH DISABILITIES ASSOCIATION) REQUIREMENTS FOR ACCESSIBLE ROUTES.
6. ALL INTERLOCKING CONCRETE PAVER "CUTS" SHALL BE MADE WITH A SPLITTER OR MASONRY SAW.

**1** TYPICAL PAVER WITH CONCRETE HEADER  
 LD-11 SECTION NTS



**2** TYPICAL BENCH PAD  
 LD-11 PLAN NTS

CALL 48 HOURS BEFORE YOU DIG

**811**

IT'S THE LAW!  
 DIAL 811

Know what's below.  
 Call before you dig.

SUNSHINE STATE ONE CALL OF FLORIDA, INC.

REVISIONS			
DATE	DESCRIPTION	DATE	DESCRIPTION
01/06/16	NEW SHEET - PAVER DETAIL / BENCH SPEC.		

**Kimley»Horn**

JAMES R. PANKONIN, RLA  
 FLORIDA RLA LICENSE NUMBER 48221  
 1777 MAIN STREET, SUITE 300  
 SARASOTA, FLORIDA 34236  
 PHONE (941) 379-7600  
 CERTIFICATE OF AUTHORIZATION: 00000696

CITY OF NAPLES
CENTRAL AVENUE

<i>HARDSCAPE DETAILS</i>
SHEET NO. LD-11



**SUMMARY OF ALTERNATE CHANGES**

**PLANT QUANTITIES**

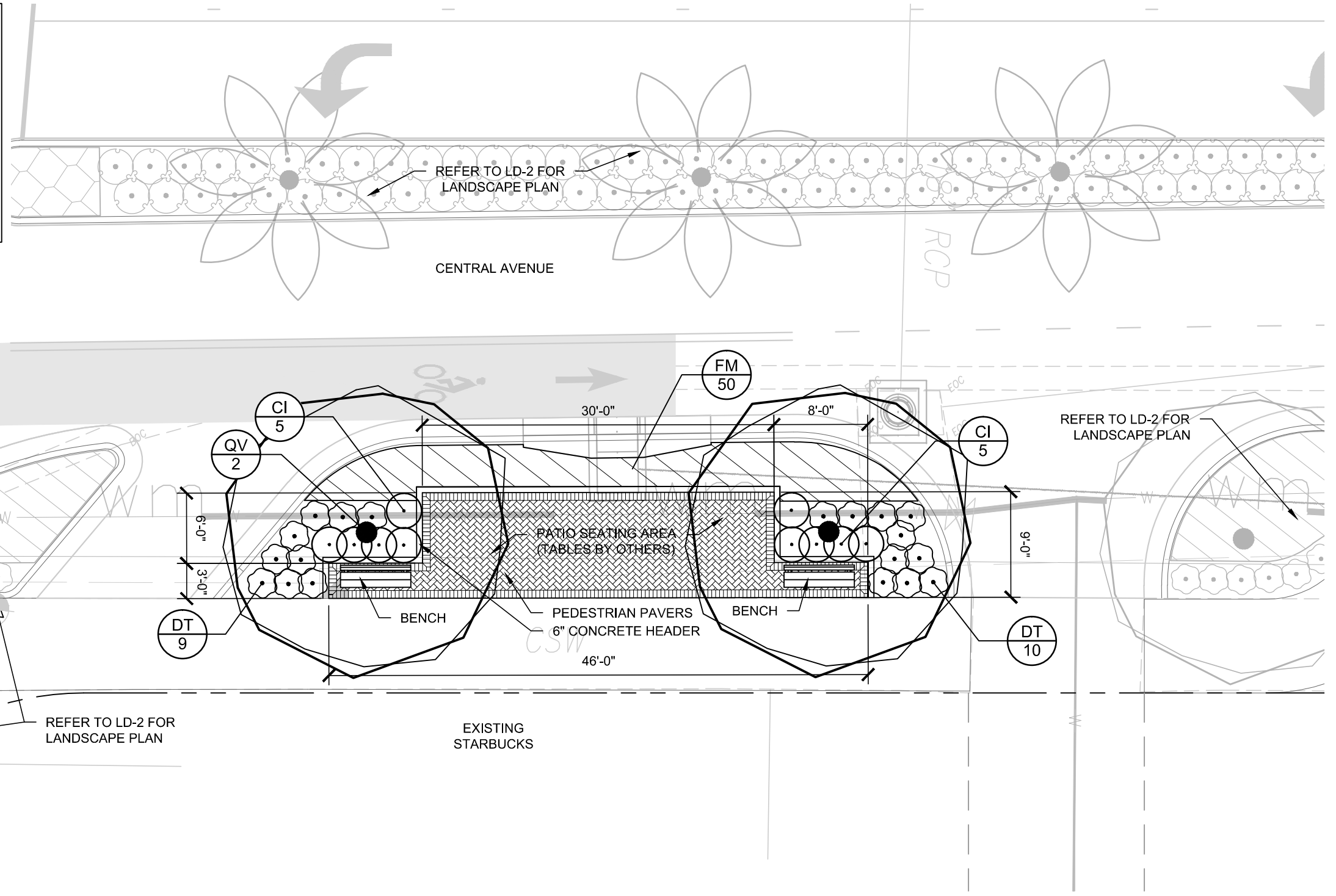
FM REDUCTION BY 14 PLANTS  
 CI REDUCTION BY 7 PLANTS  
 DT REDUCTION BY 20 PLANTS

**HARDSCAPE QUANTITIES**

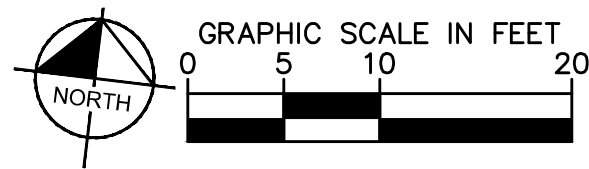
ADDITIONAL 252 SF OF PAVERS

**SITE FURNISHING QUANTITIES**

REDUCTION OF 1 BIKE RACK  
 ADDITION OF 1 BENCH



9TH STREET NORTH  
 (U.S. 41 / S.R. 45 / TAMiami TRAIL)



CALL 48 HOURS BEFORE YOU DIG

**811**

IT'S THE LAW!  
 DIAL 811

Know what's below.  
 Call before you dig.

SUNSHINE STATE ONE CALL OF FLORIDA, INC.

Plotted By: Dean, Ed Sheet: Sst: Main Street Segment 1&3 Layout: LD-12 PATIO SEATING AREA (ALTERNATE) January 06, 2016 05:03:11pm K:\var\_roadway\048320.002 central ave improvements\URG\CADD\plan sheets\1-11 STARBUCKS ALT PLAN.dwg

REVISIONS			
DATE	DESCRIPTION	DATE	DESCRIPTION
01/06/16	NEW SHEET - PATIO AREA ALTERNATE ADDED		

**Kimley»Horn**

JAMES R. PANKONIN, RLA  
 FLORIDA RLA LICENSE NUMBER 48221  
 1777 MAIN STREET, SUITE 300  
 SARASOTA, FLORIDA 34236  
 PHONE (941) 379-7600  
 CERTIFICATE OF AUTHORIZATION: 00000696

CITY OF NAPLES

CENTRAL AVENUE

*PATIO SEATING AREA  
 (ALTERNATE)*

SHEET NO.  
 LD-12

## Addendum 2 - Exhibit F – Revised Central Bid Form (Final)

Attachment A

CONCentral

ITEM NO.	ITEM DESCRIPTION	UNIT	PROJECT QUANTITY	UNIT PRICE	AMOUNT
<b>Roadway</b>					
0101 1	MOBILIZATION	LS	1		\$0.00
0102 1	MAINTENANCE OF TRAFFIC	LS	1		\$0.00
0104 10 3	SEDIMENT BARRIER	LF	1885		\$0.00
0104 18	INLET PROTECTION SYSTEM	EA	44		\$0.00
0110 1 1	CLEARING & GRUBBING	AC	3.72		\$0.00
0110 4	REMOVAL OF EXISTING CONCRETE PAVEMENT	SY	2230		\$0.00
0120 1	REGULAR EXCAVATION	CY	3908		\$0.00
0120 6	EMBANKMENT	CY	813		\$0.00
0160 4	TYPE B STABILIZATION	SY	7547		\$0.00
0162 1 11	PREPARED SOIL LAYER, FINISH SOIL, 6"	SY	533		\$0.00
0210 1 8	REWORKING LIMEROCK BASE, 4"	SY	155		\$0.00
0285709	OPTIONAL BASE, BASE GROUP 09	SY	5104		\$0.00
0327 70 5	MILLING EXIST ASPH PAVT, 2" AVG DEPTH	SY	11693		\$0.00
0334 1 12	SUPERPAVE ASPHALTIC CONC, TRAFFIC B	TN	1205.4		\$0.00
0334 1 12	SUPERPAVE ASPHALTIC CONC, TRAFFIC B (OVERBUILD)	TN	470.6		\$0.00
0337 7 42	ASPH CONC FC, TRAFFIC B, FC-9.5, PG 76-22	TN	929.2		\$0.00
0339 1	MISC. ASPHALT PAVEMENT	TN	8.25		\$0.00
0425 1201	INLETS, CURB, TYPE 9, <10	EA	2		\$0.00
0425 1203	INLETS, CURB, TYPE 9, J BOT, <10	EA	1		\$0.00
0425 1351	INLETS, CURB, TYPE P-5, <10	EA	7		\$0.00
0425 1361	INLETS, CURB, TYPE P-6, <10	EA	7		\$0.00
0425 1362	INLETS, CURB, TYPE P-6, >10	EA	1		\$0.00
0425 1451	INLETS, CURB, TYPE J-5, <10	EA	1		\$0.00
0425 1461	INLETS, CURB, TYPE J-6, <10	EA	1		\$0.00
0425 1521	INLETS, DT BOT, TYPE C, <10'	EA	8		\$0.00
0425 1910	INLETS, CLOSED FLUME	EA	6		\$0.00
0425 2 41	MANHOLE, P-7, <10'	EA	8		\$0.00
0425 2 43	MANHOLE, P-7, PARTIAL	EA	4		\$0.00
0425 2 61	MANHOLE, P-8 <10	EA	1		\$0.00
0425 2 71	MANHOLE, J-7, <10'	EA	3		\$0.00
0425 2 73	MANHOLE, J-7, PARTIAL	EA	1		\$0.00
0425 2 93	MANHOLE, J-8, PARTIAL	EA	1		\$0.00
0430175118	PIPE CULV, OPT. MATL, ROUND 18" S/CD	LF	1791		\$0.00
0430175124	PIPE CULV, OPT. MATL, ROUND 24" S/CD	LF	220		\$0.00
0430175130	PIPE CULV, OPT. MATL, ROUND, 30" S/CD	LF	1026		\$0.00
0430175218	PIPE CULV, OPT. MATL, OTHER 18" S/CD	LF	398		\$0.00
0440 1 10	UNDERDRAIN, TYPE I	LF	591		\$0.00
0520 1 10	CONCRETE CURB & GUTTER, TYPE F	LF	5915		\$0.00
0520 2 2	CONCRETE CURB, TYPE B	LF	425.9		\$0.00
0520 2 4	CONCRETE CURB, TYPE D	LF	4320		\$0.00
0520 2 8	CONCRETE CURB, TYPE RA	LF	301.8		\$0.00
0522 1	SIDEWALK CONC, 4" THICK	SY	3496		\$0.00
0522 2	SIDEWALK CONC, 6" THICK	SY	176		\$0.00
0526 1 1-A	PAVERS, ARCHITECTURAL, TRUCK APRON	SY	250.2		\$0.00
0526 1 1-B	PAVERS, ARCHITECTURAL, SPLITTER ISLANDS	SY	135		\$0.00
0526 1 1-C	PERVIOUS PAVERS, ARCHITECTURAL, PARKING	SY	557		\$0.00
550 10 228	FENCING, TYPE B, 5.1-6.0, RESET EXISTING	LF	280		\$0.00
550 60 223	FENCE GATE, TYPE B, DOUBLE, 12.1-18.0' OPENING	EA	1		\$0.00
0527 2	DETECTABLE WARNINGS	SF	328		\$0.00
0570 1 2	PERFORMANCE TURF, SOD	SY	533		\$0.00
BIO-S.	BIOSWALES (WATER QUALITY SYSTEM)	EA	5		\$0.00
<b>Signing and Marking</b>					
0523 1 3	PATTERNED PAVEMENT, VEHICULAR AREAS, GREEN BIKE LANE	SY	744		\$0.00
0700 1 11	SINGLE POST SIGN, F&I, LESS THAN 12 SF	AS	39		\$0.00
0700 1 50	SINGLE POST SIGN, RELOCATE	AS	3		\$0.00
0700 1 60	SINGLE POST SIGN, REMOVE	AS	1		\$0.00
0706 3	RETRO-REFLECTIVE PAVEMENT MARKERS	EA	142		\$0.00
0711 11123	THERMOPLASTIC, STD, WHITE, SOLID, 12"	LF	2026		\$0.00
0711 11124	THERMOPLASTIC, STD, WHITE, SOLID, 18"	LF	30		\$0.00
0711 11125	THERMOPLASTIC, STD, WHITE, SOLID, 24"	LF	2201		\$0.00
0711 11141	THERMOPLASTIC, STD, WHITE, 2-4 DOTTED GUIDELINE / 6-10 DOTTED EXTENSION LINE, 6"	GM	0.769		\$0.00
0711 11160	THERMOPLASTIC, STD, WHITE, MESSAGE	EA	8		\$0.00
0711 11170	THERMOPLASTIC, STD, WHITE, ARROW	EA	19		\$0.00
0711 11180	THERMOPLASTIC, STD, WHITE, YIELD LINE	LF	111		\$0.00
0711 11224	THERMOPLASTIC, STD, YELLOW, SOLID, 18"	LF	149		\$0.00
0711 11241	THERMOPLASTIC, STD, YELLOW, 2-4 DOTTED GUIDELINE / 6-10 DOTTED EXTENSION LINE, 6"	GM	0.129		\$0.00
0711 11421	THERMOPLASTIC, STD, BLUE, SOLID, 6"	LF	56		\$0.00
0711 14160	THERMOPLASTIC, PREFORMED, WHITE, MESSAGE	EA	22		\$0.00
0711 14170	THERMOPLASTIC, PREFORMED, WHITE, ARROWS	EA	21		\$0.00
0711 16101	THERMOPLASTIC, STD-OTHER SURFACES, WHITE, SOLID, 6"	GM	1.615		\$0.00
0711 16102	THERMOPLASTIC, STD-OTHER SURFACES, WHITE, SOLID, 8"	GM	0.047		\$0.00
0711 16131	THERMOPLASTIC, STD-OTHER SURFACES, WHITE, SKIP, 6"	GM	0.03		\$0.00
0711 16201	THERMOPLASTIC, STD-OTHER SURFACES, YELLOW, SOLID, 6"	GM	1.093		\$0.00

## Attachment A

## CONCentral

0711 16202	THERMOPLASTIC, STD-OTHER SURFACES, YELLOW, SOLID, 8"	GM	0.02		\$0.00
<b>Signalization</b>					
0630 2 11	CONDUIT, F&I, OPEN TRENCH	LF	750		\$0.00
0630 2 12	CONDUIT, F&I, DIRECTIONAL BORE	LF	275		\$0.00
0632 7 1	SIGNAL CABLE, FURNISH & INSTALL	PI	1		\$0.00
0635 2 11	PULL & SPLICE BOX, F&I, 13"X24" COVER SIZE	EA	14		\$0.00
0641 2 70	PRESTRESSED CONCRETE POLE, SHALLOW POLE REMOVAL, POLE 30' & GREATER	EA	1		\$0.00
0646 1 11	ALUMINUM SIGNALS POLE, PEDESTAL	EA	2		\$0.00
0646 1 60	ALUMINUM SIGNALS POLE, REMOVE	EA	2		\$0.00
0649 31102	MAST ARM, F&I, WIND SPEED-150, SINGLE ARM, W/O LUMINAIRE - 46	EA	1		\$0.00
0649 31108	MAST ARM, F&I, WIND SPEED-150, SINGLE ARM, WITH LUMINAIRE - 60	EA	1		\$0.00
0649 36300	MAST ARM, REMOVE SHALLOW FOUNDATION, BOLT ON ATTACHMENT	EA	2		\$0.00
0650 1 14	TRAFFIC SIGNAL, F&I, 3 SECTION, 1 WAY, ALUMINUM	AS	6		\$0.00
0650 1 18	TRAFFIC SIGNAL, F&I, 5 SECTION STRAIGHT, 1 WAY, ALUMINUM	AS	1		\$0.00
0650 1 70	TRAFFIC SIGNAL, RELOCATE	AS	2		\$0.00
0653 1 12	PEDESTRIAN SIGNAL, F&I, LED COUNTDOWN, 2 WAY	AS	2		\$0.00
0660 2 102	LOOP ASSEMBLY, F&I, TYPE B	AS	12		\$0.00
0660 2 106	LOOP ASSEMBLY, F&I, TYPE F	AS	9		\$0.00
0665 1 11	PEDESTRIAN DETECTOR, F&I, STANDARD	EA	3		\$0.00
0670 5400	TRAFFIC CONTROLLER ASSEMBLY, MODIFY	AS	1		\$0.00
0682 1 400	ITS CCTV CAMERA, RELOCATE	EA	1		\$0.00
0700 5 22	INTERNALLY ILLUMINATED SIGN, F&I, OVERHEAD MOUNT, 12-18 SF	EA	2		\$0.00
<b>Lighting</b>					
0630 2 11	CONDUIT, F&I, OPEN TRENCH	LF	3525		\$0.00
0630 2 12	CONDUIT, F&I, DIRECTIONAL BORE	LF	1505		\$0.00
0635 2 11	PULL & SPLICE BOX, F&I, 13"X24" COVER SIZE	EA	42		\$0.00
0715 1 12	LIGHTING CONDUCTORS, F&I, INSULATED, NO. 8-6	LF	19540		\$0.00
0715 1 13	LIGHTING CONDUCTORS, F&I, INSULATED, NO. 4-2	LF	160		\$0.00
0715 1 60	LIGHTING CONDUCTORS, REMOVE & DISPOSE, CONTRACTOR OWNS	LF	1395		\$0.00
0715 7 11	LOAD CENTER, F&I SECONDARY VOLTAGE	EA	1		\$0.00
0715 11 118	LUMINAIRE, F&I, ROADWAY, FLOOD	EA	4		\$0.00
0715-516-115	LIGHT POLE COMPLETE-SPECIAL DESIGN, F&I, POLE TOP MOUNT, ALUMINUM, CUSTOM HEIGHT	EA	31		\$0.00
0715-540-000	LIGHT POLE COMPLETE-SPECIAL DESIGN, RELOCATE	EA	5		\$0.00
0715-550-000	LIGHT POLE COMPLETE-SPECIAL DESIGN, REMOVE	EA	3		\$0.00
<b>Utilities</b>					
1050 11222	2-4.9" PVC Pipe (F&I) - PROPOSED 2" & 4"	LF	125		\$0.00
1050 11223	5-7.9" PVC Pipe (F&I) - PROPOSED 6"	LF	625		\$0.00
1050 11224	8-19.9" PVC Pipe (F&I) - PROPOSED 8", 12", 16", 18"	LF	2010		\$0.00
1050 11424	8-19.9" DI PIPE (F&I) - PROPOSED 8"	LF	80		\$0.00
1050 11324	8-19.9" PE Pipe (F&I) - PROPOSED 10" (Directional Drill)	LF	375		\$0.00
1050 18002	2-4.9" Plug & Out of Service - 2" & 4"	LF	1021		\$0.00
1050 18003	5-7.9" Plug & Out of Service - 6"	LF	1235		\$0.00
1050 18004	8-19.9" Plug & Out of Service - 16"	LF	120		\$0.00
1080 11207	UTILITY FIXTURES, F&I, 2-4.9", LINE STOP	EA	1		\$0.00
1080 11307	UTILITY FIXTURES, F&I, 5-7.9", LINE STOP	EA	4		\$0.00
1080 11407	UTILITY FIXTURES, F&I, 8-19.9", LINE STOP	EA	3		\$0.00
1055 11414	UTILITY FITTING, F&I, DI/CI, ELBOW, 8-19.9"	EA	65		\$0.00
1055 11424	UTILITY FITTINGS, F&I, DI/CI, TEE, 8 - 19.9"	EA	17		\$0.00
1055 11454	8-19" UTILITY FITTINGS (F&I) PLUG/CAP	EA	2		\$0.00
1080 11404	UTIL FIXT, F&I, 8-19.9", VALVE ASSEMBLY	EA	32		\$0.00
1080 11409	UTIL FIXT, F&I, 8-19.9", MECH JONT RESTR	EA	260		\$0.00
1644113 08	FIRE HYDRANT, F&I, STD, 2 HOSE, 1 PUMP, 6"	EA	5		\$0.00
-	Long Water Services	EA	8		\$0.00
-	Short Water Services	EA	10		\$0.00
<b>Landscaping</b>					
751-38-11	BENCH	EA	3		\$0.00
<b>SINGLE TRUNK PALMS - LARGE PLANTS</b>					
580-1-2	ARCHONTOPHOENIX CUNNINGHAMIANA (PICCABEEN PALM)	EA	29		\$0.00
580-1-2	ROYSTONEA REGIA (ROYAL PALM)	EA	63		\$0.00
580-1-2	ADONIDIA MERRILLII (CHRISTMAS PALM)	EA	45		\$0.00
<b>TREES - LARGE PLANS</b>					
580-1-2	QUERCUS VIRGINIANA 'HIGH RISE' (HIGH RISE SOUTHERN LIVE OAK)	EA	17		\$0.00
580-1-2	TAXODIUM DISTICHUM (BALD CYPRESS)	EA	9		\$0.00
<b>SHRUBS - SMALL AND LARGE PLANTS</b>					
580-1-2	CHRYSOBALANUS ICACO 'RED TIP' (RED TIP COCOPLUM)	EA	232		\$0.00
580-1-1	DIANELLA TASMANICA 'VARIEGATA' (FLAX LILY)	EA	675		\$0.00
580-1-1	CODIAEUM VARIEGATUM 'MAMMEY' (CROTON)	EA	692		\$0.00
580-1-1	SCHEFFLERA ARBORICOLA 'TRINETTE' (VARIEGATED SCHEFFLERA)	EA	505		\$0.00
580-1-1	DURANTA REPANS 'GOLD MOUND' (GOLDEN DEWDROP DURANTA)	EA	101		\$0.00
580-1-1	FICUS MICROCARPA 'GREEN ISLAND' (GREEN ISLAND FICUS)	EA	3019		\$0.00
580-1-1	JUNIPERUS CHINENSIS 'PARSONII' (CHINESE JUNIPER)	EA	488		\$0.00
580-1-1	NEOREGELIA X 'ROYAL BURGANDY' (ROYAL BURGANDY BROMELIAD)	EA	186		\$0.00
<b>ANNUALS</b>					
580-1-1	ANNUALS	EA	308		\$0.00

Attachment A

CONCentral

ORNAMENTAL GRASSES - SMALL PLANTS					
580-1-1	MUHLENBERGIA CAPILLARIS(PINK MUHLY)	EA	503		\$0.00
580-1-1	SPARTINA BAKERI(SAND CORD GRASS)	EA	156		\$0.00
SOIL AMENDMENTS					
-	BOLD & GOLD	CY	48		\$0.00
Irrigation					
0590 70	IRRIGATION SYSTEM	LS	1		\$0.00

CONTRACTOR NAME: \_\_\_\_\_  
PRINT / SIGN / DATE

<b>SUBTOTAL:</b>	<b>\$0.00</b>
<b>2.5% ALLOWANCE:</b>	<b>\$0.00</b>
<b>PROJECT TOTAL:</b>	<b>\$0.00</b>