



JOSEPH H. KELLEY, P.L.L.C.
 LANDSCAPE ARCHITECTURE AND PLANNING
 3805 HANOVER ST., FORT MYERS, FL 33901
 JKH@KELLEYPLANNING.COM

JOSEPH H. KELLEY, P.L.L.C.
 FLORIDA REGISTRATION #LA-00189

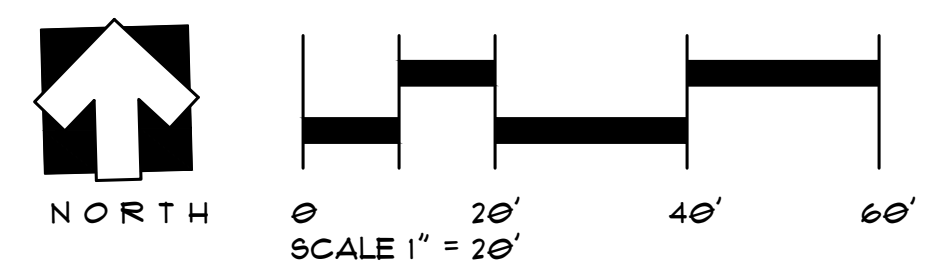
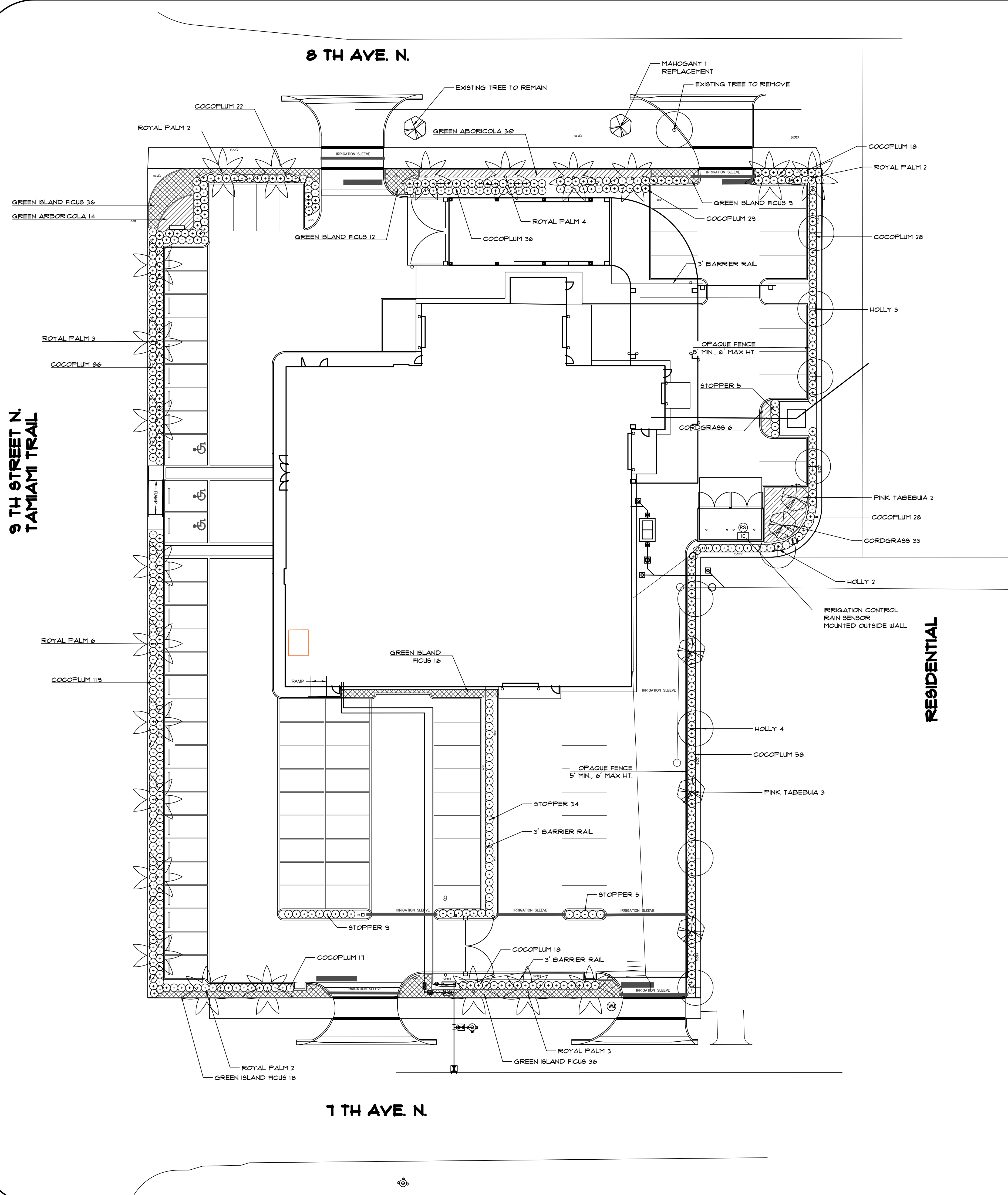
ROLLS ROYCE OF NAPLES
 US 41 NAPLES FLORIDA
 COMMERCIAL DEVELOPMENT
 LANDSCAPE PLAN

DATE: 09/01/2023
 DRAWN BY: JOSH KELLEY
 FILE NAME: ROLLS ROYCE - LS.DWG
 REVISION NOTES:
 01/28/2024 REVISED PER SITE PLAN CHANGES

SHEET NUMBER:
L-1
 1 OF 2

CITY OF NAPLES LDC REQUIREMENTS			
PROJECT INFORMATION			
PROJECT NAME	ROLLS ROYCE OF NAPLES		
PROJECT ADDRESS	710 9TH STREET N. NAPLES, FL 34102		
PROJECT ZONING CLASSIFICATION	COMMERCIAL COM		
PROJECT STRIP NUMBERS	073600 A 14A34		
FRONT SETBACK AREA			
LANDSCAPE AREA REQUIRED	5' MIN WIDTH	3965 SQFT	
TREES REQUIRED	1/180 SF	23 TREES	
TREES PROVIDED		23 TREES	
SHRUBS PROVIDED		302 SHRUBS	
AREAS ADJACENT TO RESIDENTIAL USE			
LANDSCAPE AREA REQUIRED	1/50 LF	1248 SQFT	
TREES REQUIRED		8 TREES	
TREES PROVIDED		9 SHRUBS	
SHRUBS PROVIDED		114 SHRUBS	
9' MIN., 6' MAX. HEIGHT OPAQUE WOOD FENCE PROVIDED			
INTERIOR LANDSCAPING FOR VEHICULAR USE AREAS			
INTERIOR PARKING SPACES		26 SPACES	
LANDSCAPE AREA REQUIRED	20 SF PER SPACE	520 SQFT	
VEHICULAR USE AREAS			
LANDSCAPE AREA REQUIRED PER SEC 50-74(C)	4,1407 SF	63 SPACES	
TOTAL LANDSCAPE AREA REQUIRED	(41407 SQFT - 63X300 SF) X 2PER 100 SQFT	450 SQFT	
LANDSCAPE AREA PROVIDED		970 SQFT	
LANDSCAPE TREES REQUIRED	1 TREE PER 100 SQFT	5 TREES	
LANDSCAPE TREES PROVIDED		5 TREES	

PLANT SCHEDULE						
TREES						
QUANTITY	NAME	COMMON NAME	SPECIFICATION	SPACING	NATIVE STATUS	
9	LEX CASBINE	DAHOON HOLLY	16' HT., 3" CAL., 4" SFR		NATIVE	
22	ROYSTONIA ELATA	ROYAL PALM	12' GW, MATCHED		NATIVE	
5	TABEBUA HETEROPHYLLA	PINK TABEBUA	16' HT., 5" CAL 5' CT. MIN		NATIVE	
1	MAHAGONY SUEETINIA	MAHOGANY	16' HT., 5" CAL 6' SFR		NATIVE	
SHRUBS						
QUANTITY	NAME	COMMON NAME	SPECIFICATION	SPACING	NATIVE STATUS	
499	CHRYSOBOLANUS IAGO	COCOPLUM	24" HT., 3 GALLON	36" OC	NATIVE	
121	FIGUS MACROPHYLLA	GREEN ISLAND FIGUS	18" HT., 3 GALLON	36" OC	NON-NATIVE	
93	MYRACANTHES FRAGRANS	STOPPER	24" HT., 3 GALLON	36" OC	NATIVE	
44	SCHIEFFELERA ARBORICOLA	GREEN ARBORICOLA	24" HT., 3 GALLON	36" OC	NON-NATIVE	
39	SPARTINA BAKERII	CORDGRASS	24" HT., 3 GALLON	36" OC	NATIVE	
GROUND COVERS						
600	SECUNDATUM NOTATUM	FLORITAM 600	SAND GROUT, ROLLED			



ROLLS ROYCE OF NAPLES
 US41 NAPLES FLORIDA
 COMMERCIAL DEVELOPMENT
 LANDSCAPE PLAN

DATE: 04/25/2023
 DRAWN BY: JOSH KELLEY

FILE NAME:
 ROLLS ROYCE - L6.DWG

REVISION NOTES:

LAND DEVELOPMENT CODE REQUIREMENTS:

- ALL LANDSCAPE MATERIALS DELINEATED, IMPLIED, OR COMMITTED TO THAT ARE INTENDED TO MEET THE REQUIREMENTS OF THE CITY OF NAPLES LDC, SHALL NOT BE INSTALLED WITHIN EASEMENTS, RIGHT-OF-WAYS, STORMWATER CONVEYANCE AREAS UNLESS OTHERWISE AGREED TO OR STATED WITHIN ZONING RESOLUTIONS
- ALL TREES PROVIDED IN COMPLIANCE TO THE CITY OF NAPLES LDC REQUIREMENTS SHALL BE A MINIMUM OF TEN FEET (10') IN HEIGHT, HAVE A FOUR FOOT (4') SPREAD, AND A TWO INCH (2") INCH CALIPER MEASURED TWELVE INCHES (12") FROM THE GROUND AT THE TIME OF PLANTING. NO LESS THAN SEVENTY-FIVE PERCENT (75%) OF THE REQUIRED NUMBER OF TREES MAY BE NATIVE SPECIES. NATIVE PALMS MAY BE USED IN PLACE OF REQUIRED BUFFER AND GENERAL TREES ON A 1:1 BASIS. REQUIRED INTERNAL CANOPY TREES REQUIRE A 3:1 RATIO WHEN PALMS ARE SUBSTITUTED FOR TREES. SAID SUBSTITUTED PALMS MUST ALSO BE CLUSTERED IN GROUPS OF THREE (3).
- ALL SHRUBS PROVIDED IN COMPLIANCE TO THE CITY OF NAPLES LDC REQUIREMENTS SHALL BE AT A MINIMUM TWENTY-FOUR INCHES (24") IN HEIGHT, BE IN A MINIMUM THREE GALLON (3G) CONTAINER, AND BE SPACED NO MORE THAN EIGHTEEN INCHES (18") TO THIRTY-SIX INCHES (36") ON CENTER (OC). ALL SHRUBS PROVIDED IN THIS CATEGORY MUST ATTAIN AND BE MAINTAINED AT A MINIMUM HEIGHT OF THIRTY-SIX INCHES (36") IN PERPETUITY. NOTE: TYPE 'F' BUFFERS REQUIRE LARGER SHRUB MATERIALS TO BE FORTY-EIGHT INCHES (48") IN HEIGHT AT THE TIME OF PLANTING AND TO BE MAINTAINED AT SIXTY (60") AT MATURITY. (SEE DRAWINGS WHERE APPLICABLE). ALL SHRUBS IN TYPE 'D' & 'F' BUFFERS SHALL BE INSTALLED AS A DOUBLE-ROW HEDGE. AT LEAST 50 PERCENT OF SHRUBS USED TO FULFILL CITY OF NAPLES REQUIREMENTS MUST BE NATIVE FLORIDA SPECIES.
- ALL TREES INSTALLED IN RESPONSE TO THE REQUIRED INTERNAL LANDSCAPE AREAS, ALSO KNOWN AS 'INTERNAL CANOPY TREES' SHALL BE LOCATED WHERE AND AS SHOWN ON THE DRAWINGS. PALMS MAY BE SUBSTITUTED ON A 3:1 BASIS AND CLUSTERED.
- ORGANIC MULCH (NO STONE, CHIPPED TIRES, OR SHELL) SHALL BE REQUIRED IN ALL PLANTING AREAS AND SHALL BE APPLIED NO LESS THAN THREE INCHES (3") IN DEPTH AT THE TIME OF PLANTING. ALL TREES AND PALMS OUTSIDE OF BEDDING AREAS SHALL HAVE A MULCH RING NOT LESS THAN TWENTY-FOUR INCHES (24") BEYOND THE TRUNK IN ALL DIRECTIONS AT THE SPECIFIED DEPTH OF THREE INCHES (3"). THE USE OF CYPRESS MULCH IS DISCOURAGED.
- THE CONTRACTOR SHALL PROVIDE AND MAINTAIN THROUGH FINAL ACCEPTANCE (CERTIFICATE OF COMPLIANCE) A TREE PROTECTION BARRIER FOR ALL INDIVIDUAL OR MASSES OF INDIGENEOUS PLANT MATERIALS BEING CREDITED AND/OR PRESERVED.
- IF ANY PROTECTED TREE DIES WITHIN THREE (3) YEARS FROM THE ISSUANCE OF A CERTIFICATE OF COMPLIANCE (CC), THEY MUST BE REPLACED BY THE NUMBER OF TREE CREDITS TAKEN (NORMALLY 5) AND AT THE MINIMUM SIZES AND VARIETIES SPECIED BY CODE OR HEREIN.
- PLANT MATERIAL PROVIDED IN COMPLIANCE TO THE CITY OF NAPLES LDC MAY ONLY BE PRUNED TO PROMOTE HEALTHY, UNIFORM, AND NATURAL GROWTH OF THE SPECIFIC PLANT (EXCEPT WHERE NECESSARY TO PROMOTE PUBLIC HEALTH, SAFETY, AND WELFARE). PRUNING MUST BE IN ACCORDANCE TO AND ACCEPTABLE WITH THE "PRUNING STANDARDS" (LATEST EDITION) ISSUED BY THE "NATIONAL ARBORIST ASSOCIATION." SEVERELY PRUNED AND/OR DAMAGED TREES MUST BE REPLACED. "HAT-RACKING" PRACTICES ARE PROHIBITED.
- PLANT MATERIAL PROVIDED IN COMPLIANCE TO THE CITY OF NAPLES LDC SHALL BE AT A MINIMUM, MEET THE STANDARDS FOR FLORIDA NO. 1 AS DEFINED BY "GRADES AND STANDARDS, PARTS 1 & 2, FLORIDA DEPARTMENT OF AGRICULTURE, LATEST EDITION. SEE PLANT SCHEDULE FOR SPECIFIC QUALITY SPECS.
- THE CONTRACTOR SHALL BE REQUIRED TO MAINTAIN SAFE SIGHT DISTANCE TRIANGLES AT ALL INTERSECTIONS AND VEHICULAR CONNECTIONS. SIGHT TRIANGLES MUST BE IN ACCORDANCE WITH THE ROADSIDE RECOVERY AREA PROVISIONS OF THE FDOT GREEN BOOK. ALL SIGHT TRIANGLES SHALL MAINTAIN A CLEAR ZONE BETWEEN THIRTY-SIX INCHES (36") AND EIGHT FEET (8'). CONTRACTOR TO VERIFY PRIOR TO FINAL ACCEPTANCE.
- ALL OF THE FOLLOWING EXOTIC SPECIES ARE PROHIBITED AND MUST BE REMOVED FROM THE SITE AND MAINTAINED FREE OF REGENERATION IN PERPETUITY.

MELALEUCA	(MELALEUCA)	AIR POTATO	(DIOSCOREA ALATA)
BRAZILIAN	(MELALEUCA)	ARLEAF ACACIA	(ACACIA AURICULIFORMIS)
PEPPER	(SCHINUS)	DOWNEY ROSEMYRTLE	(RHODOMYRTUS TOMENTOSA)
AUSTRALIAN	(TEREBINTHIFOLIUS)	TROPICAL SODA APPLE	(SOLANUM VIARUM)
PINES	(ALL CAUSARINA SPECIES)	CUBAN LAUREL	(FICUS RETUSA)
WOMANS	(ALBESZIA LEBBECK)	CHINESE TALLOW	(SAPINUM SEBIFERUM)
TONGUE	(BISHOVIA JAVONICA)	JAVA PLUM	(SYZYGIUM CUMINI)
BISHOPWOOD	(CUPIANOPSIS SPP.)	ROSE APPLE	(SYZYGIUM JAMBOS)
CARROTWOOD	(DALBERGIA SIBBOOD)	CORK TREE	(THESPISIA SPP.)
ROSEWOOD	(EUCALYPTUS SPP.)	WEDDILLIA	(WEDDILLIA TRILOBATA)
MURRY RED GUM	(FICUS BENJAMINA)	CLIMBING FERN	(LYGODIUM MICROPHYLLUM)
BENJAMIN FIG		CLIMBING FERN	(LYGODIUM JAPONICUM)

TYPICAL AND SPECIFIC CONSTRUCTION STANDARDS:

- ALL PLANTING AREAS SHALL BE PROPERLY PREPARED TO RECEIVE PLANT MATERIAL PRIOR TO INSTALLATION. PLANTING AREAS WITH BOULDERS (OVER 4" IN DIA.) AND BASE ROCK (LIMESTONE) WILL NOT BE ACCEPTED AND MUST BE RECTIFIED PRIOR TO CERTIFICATION. ALL FINISHED GRADES SHALL BE WITHIN TWO INCHES (2") OF ALL TRANSITIONS (I.E. WALKS, CURBS, ETC.). NO EXPOSED SURFACES AT FINAL GRADE GREATER THAN TWO INCHES (2") WILL BE ACCEPTED (SEE DETAIL). ONCE SOD AND MULCH ARE APPLIED, ALL TRANSITIONS SHALL BE EVEN, SMOOTH, CONGRUENT, AND WITHOUT INTERRUPTION.
- ALL EXOTIC PLANT SPECIES, HEREIN DEFINED, SHALL BE PHYSICALLY REMOVED FROM THE SITE. LARGE STUMPS ARE TO BE GROUND (MINIMUM 24" BELOW GRADE) OR REMOVED. SMALLER STUMPS (LESS THAN 6" DIA) MAY BE CUT TO GROUND LEVEL AND TREATED.

LANDSCAPE BUFFER NOTES:

- NO TREES/SHRUBS TO BE PLANTED WITHIN DRAINAGE OR UTILITY EASEMENTS
- CONTRACTOR TO FIELD ADJUST TREES TO AVOID ANY CONFLICTS WITH UTILITIES, DRAINAGE STRUCTURES, ETC
- WITH APPROVAL, NATIVE SPECIES MEETING THE MINIMUM SIZE REQUIREMENTS MAY BE SUBSTITUTED FOR THOSE SPECIFIED

IRRIGATION REQUIREMENTS:

TO IMPROVE THE SURVIVABILITY OF REQUIRED LANDSCAPING, CULTIVATED LANDSCAPE AREAS MUST BE PROVIDED WITH AN AUTOMATIC IRRIGATION SYSTEM. ALL REQUIRED IRRIGATION SYSTEMS MUST BE DESIGNED TO ELIMINATE THE APPLICATION OF WATER TO IMPERVIOUS AREAS, INCLUDING ROADS, DRIVES AND OTHER VEHICLE AREAS. REQUIRED IRRIGATION MUST ALSO BE DESIGNED TO AVOID IMPACTS ON EXISTING NATIVE VEGETATION.

ALL NEW DEVELOPMENTS THAT HAVE REQUIRED LANDSCAPING MUST BE IRRIGATED BY THE USE OF AN AUTOMATIC IRRIGATION SYSTEM WITH CONTROLLER SET TO CONSERVE WATER. MOISTURE DETECTION DEVICES MUST BE INSTALLED IN ALL AUTOMATIC SPRINKLER SYSTEMS TO OVERRIDE THE SPRINKLER ACTIVATION MECHANISM DURING PERIODS OF INCREASED RAINFALL. WHERE EXISTING IRRIGATION SYSTEMS ARE MODIFIED REQUIRING THE ACQUISITION OF A PERMIT, AUTOMATIC ACTIVATION SYSTEMS AND OVERRIDING MOISTURE DETECTION DEVICES MUST BE INSTALLED. (FPD, NO. 98-28, § 2, 12-8-99)

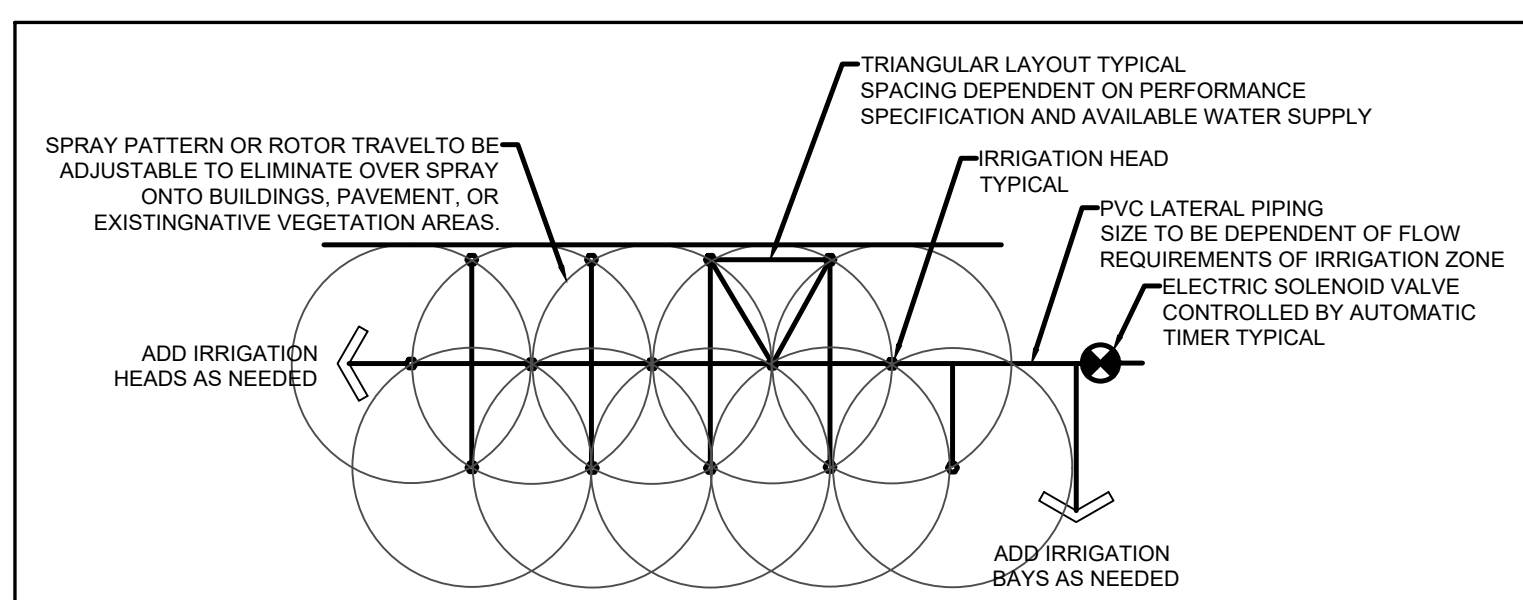
IRRIGATION NOTES:

- IRRIGATION SYSTEM TO BE INSTALLED TO PROVIDE 100% COVERAGE (HEAD TO HEAD) TO CODE REQUIRED PLANTINGS.
- IRRIGATION CONNECTION SHALL BE DETERMINED BY OWNER.
- DRY RETENTION AREAS SHALL BE IRRIGATED FROM THE TOP OF BANK TO THE BOTTOM OF THE SLOPE ONLY.
- PARKING ISLANDS AND BUILDING PERIMETER PLANTINGS SHALL HAVE SPRAY TYPE HEADS OR FLOOD BUBBLER TYPE IRRIGATION.
- CONTRACTOR TO DETERMINE IRRIGATION ZONE DELINEATION AND PIPE SIZING TO INSURE WATER VELOCITY SHALL NOT EXCEED 5 FEET PER SECOND THROUGH ANY PIPING OR IRRIGATION COMPONENT.
- ALL IRRIGATION PIPING INSTALLED UNDER PAVEMENT SHALL BE INSTALLED IN SLEEVES EITHER EXISTING OR ADDED AS PART OF THE RENOVATION.
- THIS PLAN IS SCHEMATIC IN NATURE. COMPONENTS ARE SHOWN FOR CLARITY. ACTUAL LOCATION OF COMPONENTS MAY VARY DUE TO FIELD CONDITIONS.
- FUTURE DEVELOPMENT AREA SHALL NOT BE IRRIGATED.
- THE IRRIGATION SYSTEM SHALL BE DESIGNED SUCH THAT NO WATER SHALL BE APPLIED TO IMPERVIOUS SURFACES.

COMPONENT SPECIFICATIONS:

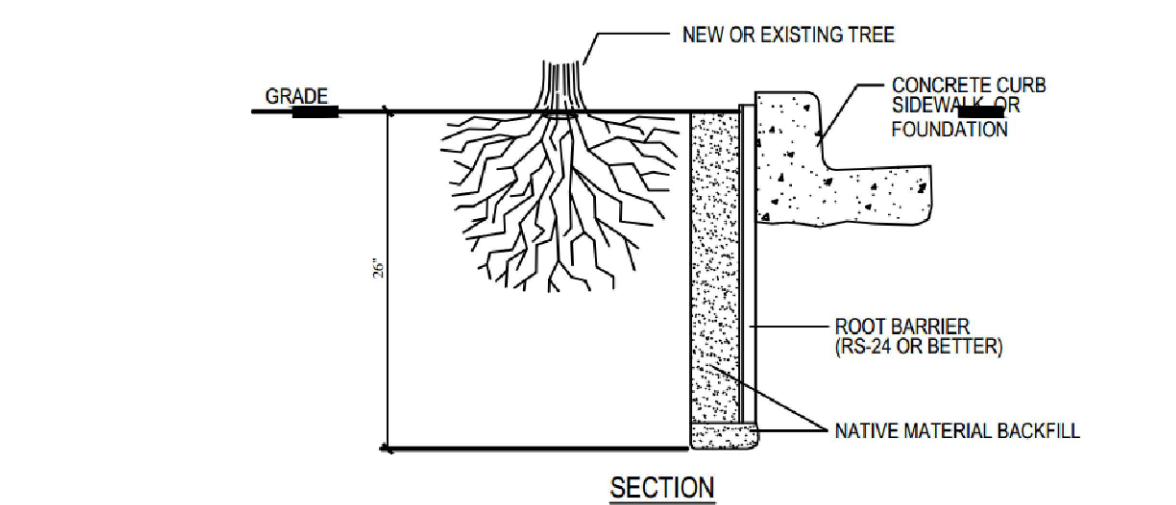
CONTROLLER	RAIN BIRD ESP SERIES 4 STATION OUTDOOR CONTROLLER MINI-CLICK II
RAIN SENSOR	RAIN BIRD PEB SERIES VALVES 1" TO 2" SIZE
SOLENOID VALVES	20-200 PSI, 75-200 GPM
PERFORMANCE SPECIFICATIONS	
ROTOR TYPE IRRIGATION HEADS	RAIN BIRD T-BIRD SERIES
PERFORMANCE SPECIFICATIONS	RADIUS 16'-50"
	2.5-65 PSI, 63-9.1 GPM
SPRAY TYPE IRRIGATION HEADS	RAIN BIRD UNI-SPRAY SERIES 6" POP-UP
PERFORMANCE SPECIFICATIONS	RADIUS 7'-18"
	15-70 PSI, 48-5.32 GPM
FLOOD BUBBLER TYPE IRRIGATION HEADS	RAIN BIRD UNI-SPRAY SERIES 6" POP-UP

(OR APPROVED EQUAL)



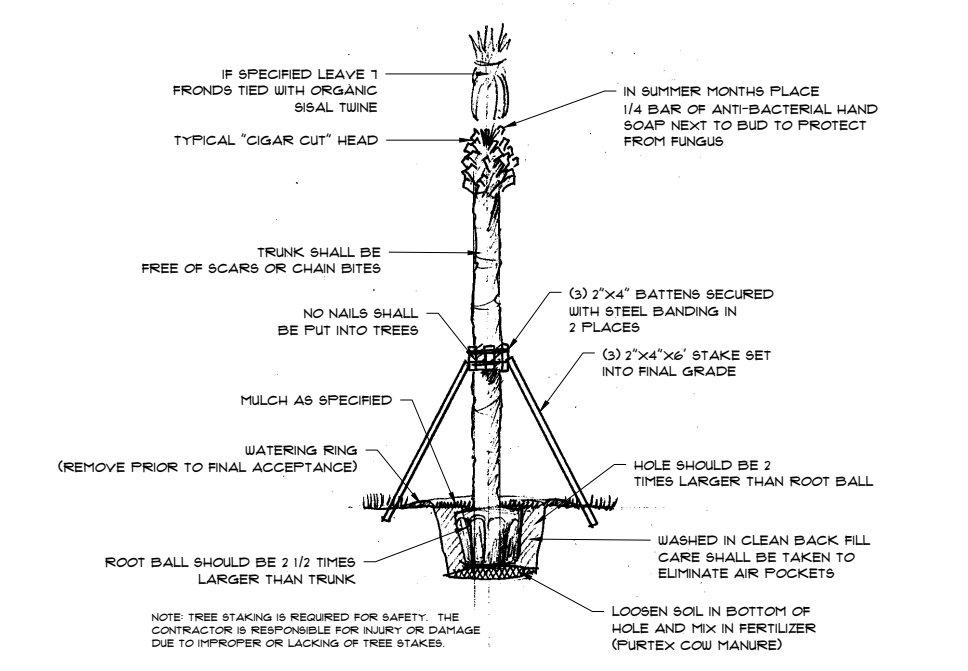
- IRRIGATION LAYOUT NOTES:**
- ALL LAYOUTS TO USE TRIANGULAR HEAD TO HEAD SPACING TO ACHIEVE 100% COVERAGE OF REQUIRED AREA.
 - SPRAY TYPE HEADS AND ROTOR TYPE HEADS TO UTILIZE THE SAME SCHEMATIC ZONE LAYOUT PATTERN (TRIANGULAR). HEAD SPACING TO BE DETERMINED BY HEAD TYPE AND PERFORMANCE SPECIFICATIONS.
 - SPRAY HEAD ZONES AND ROTOR HEAD ZONES SHALL BE CONTROLLED SEPARATELY BY AUTOMATIC CONTROL TIMER EQUIPPED WITH "MINI-CLICK II" RAIN SENSOR OR EQUIVALENT.

TYPICAL IRRIGATION ZONE DIAGRAM
 N.T.S.

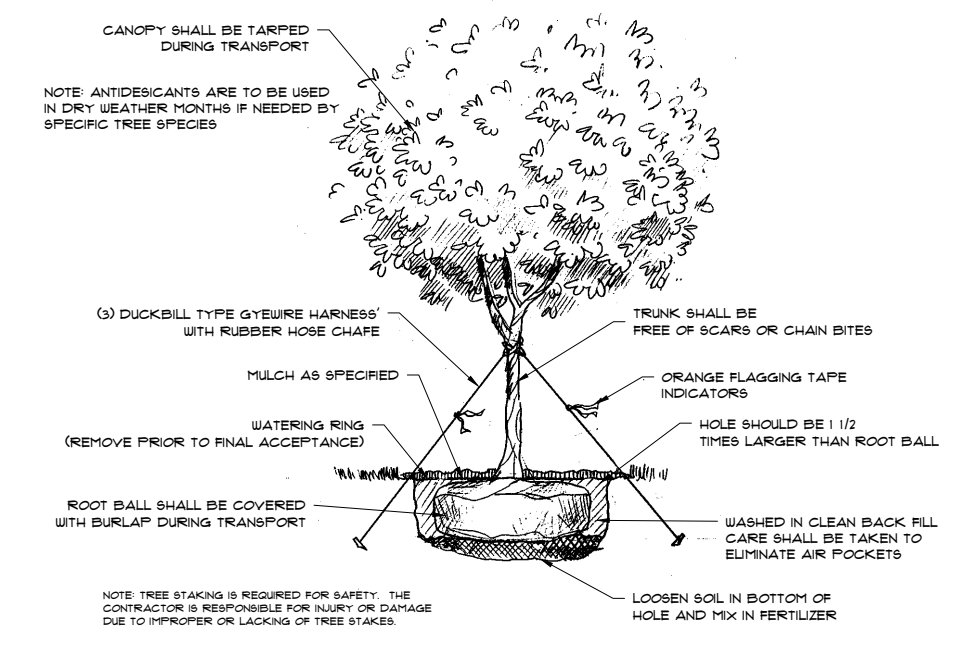


- APPLICATION NOTES:**
- INSTALLATION TO BE COMPLETED IN ACCORDANCE WITH MANUFACTURER'S SPECIFICATIONS.
 - DO NOT SCALE DRAWINGS.
 - THE RAISED ROOT GUIDING RIBS MUST BE FACING TOWARDS THE TREE ROOTS.
 - THE TOP OF THE BARRIER PANELS MUST BE SLIGHTLY ABOVE GRADE (NEVER BELOW GRADE).
 - POSITION BARRIER PANELS VERTICALLY WITH TOP AGAINST THE STRUCTURE TO BE PROTECTED.
 - SEE LANDSCAPE SITE PLAN TO DETERMINE TREES THAT REQUIRE BARRIER PANELS.
 - CONTRACTORS NOTE: FOR PRODUCT AND COMPANY INFORMATION VISIT www.CAD4eols.com/info
 - A PRODUCT OF VESPRO, INC., 800-954-0914, WWW.VESPROINC.COM (COPYRIGHT APPLIES)
 - APPLICATION TO BE APPLIED IN ALL SITUATIONS WHERE A TREE IS WITHIN SIX FEET (6') OF A CURB, SIDEWALK, OR FOUNDATION.

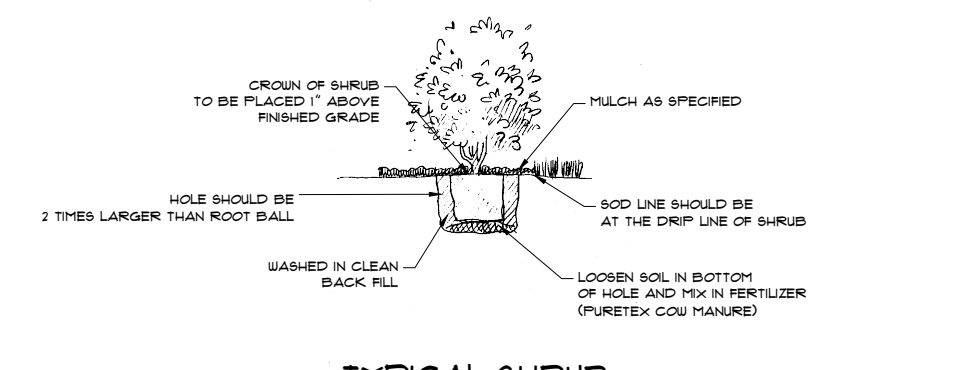
ROOT BARRIER DETAIL (AS APPLICABLE AND NOTED):



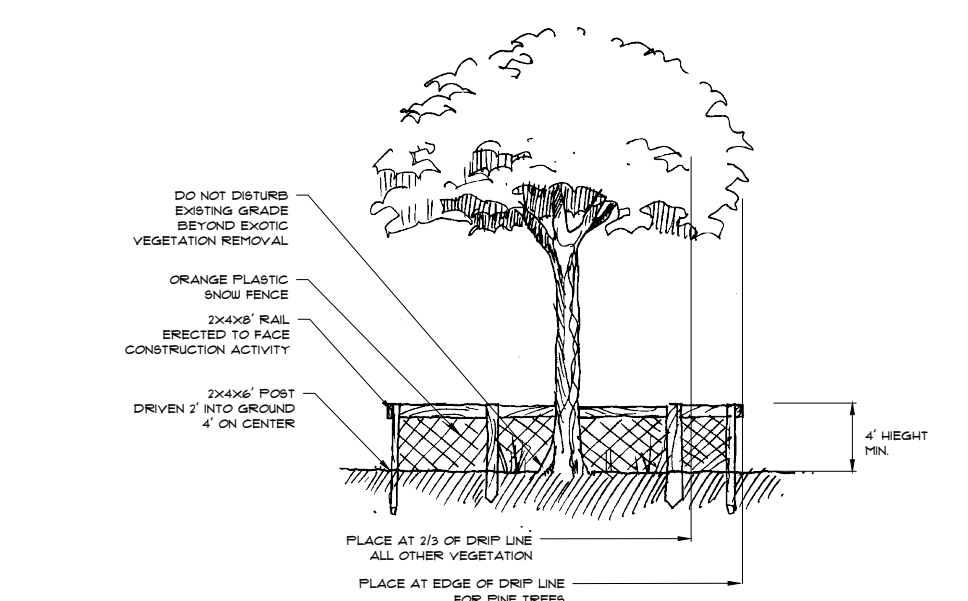
TYPICAL PALMATE PLANTING DETAIL
 N.T.S.



TYPICAL TREE PLANTING DETAIL
 N.T.S.



TYPICAL SHRUB PLANTING DETAIL
 N.T.S.



PROTECTED TREE BARRIER DETAIL
 N.T.S.

TYPE 'D' BUFFER HEDGE TYPICAL LAYOUT

