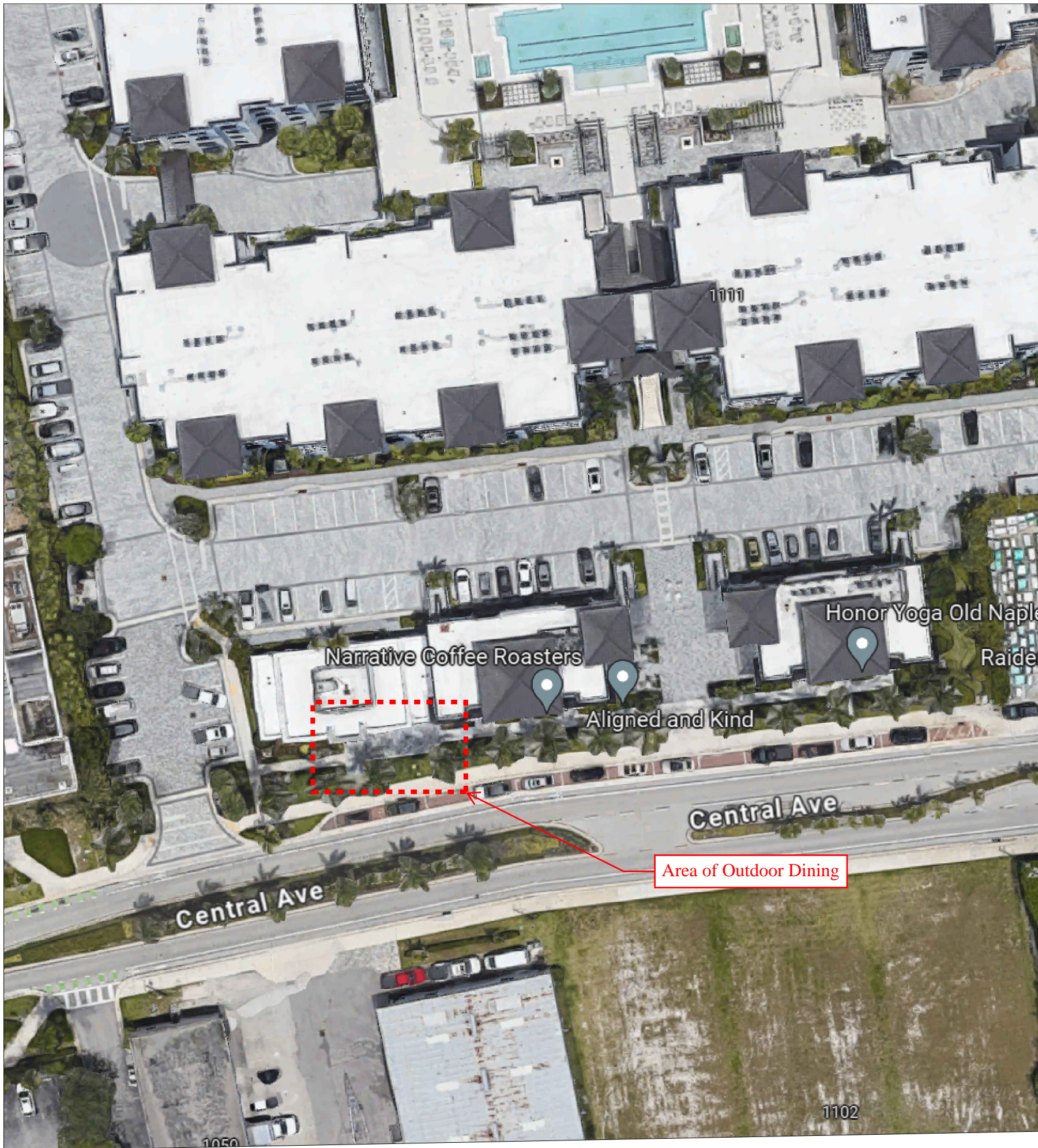


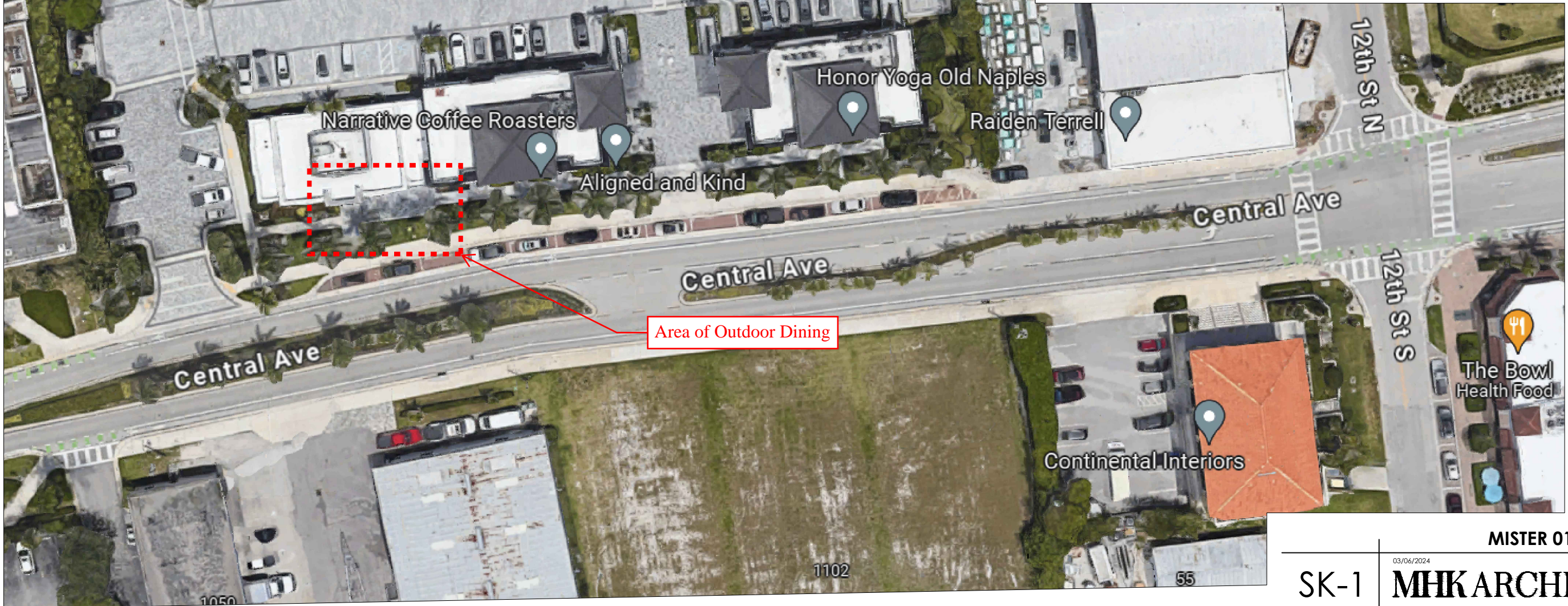
MARK

ARCHITECTURE

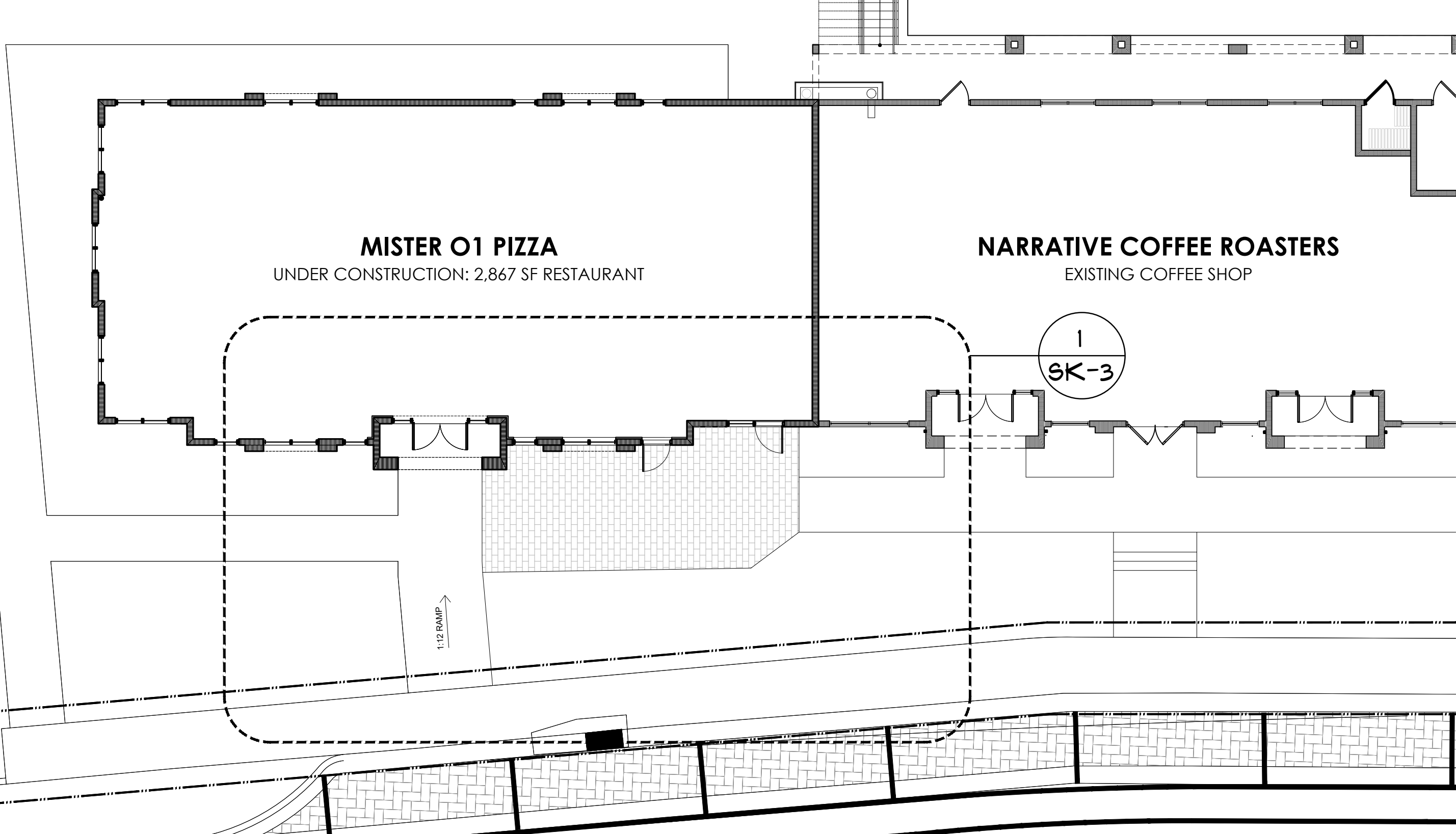
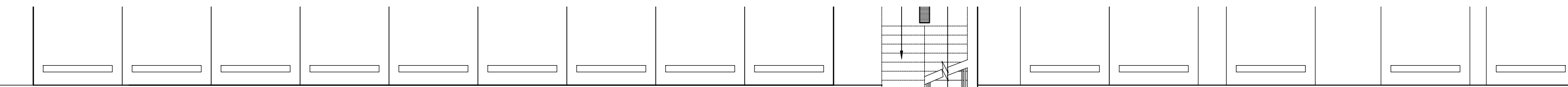
TUE 26 MAR 2024 10:12:12PM EST \\NASERVER\DRPBOX\24077_JC_111_CENTRAL_MASTER_01_PIZZA_00_KENNEDY\03_DRAWINGS\01_PDF\03_ENTITLEMENTS\WORKING FILES\24077_MASTER_01_PIZZA_000.DWG



STREET VIEW



TUE 26 MAR 2024 -02:12:19PM ESTS \\MHSERVER\PROJ\2407\1\111_CENTRAL_MISTER_01_PIZZA_000.DWG



MISTER O1 PIZZA

UNDER CONSTRUCTION: 2,867 SF RESTAURANT

NARRATIVE COFFEE ROASTERS

EXISTING COFFEE SHOP

1
SK-3

1:12 RAMP

CENTRAL AVE.

MISTER O1 PIZZA

EXISTING SITE PLAN
SCALE: 3/32" = 1'-0"



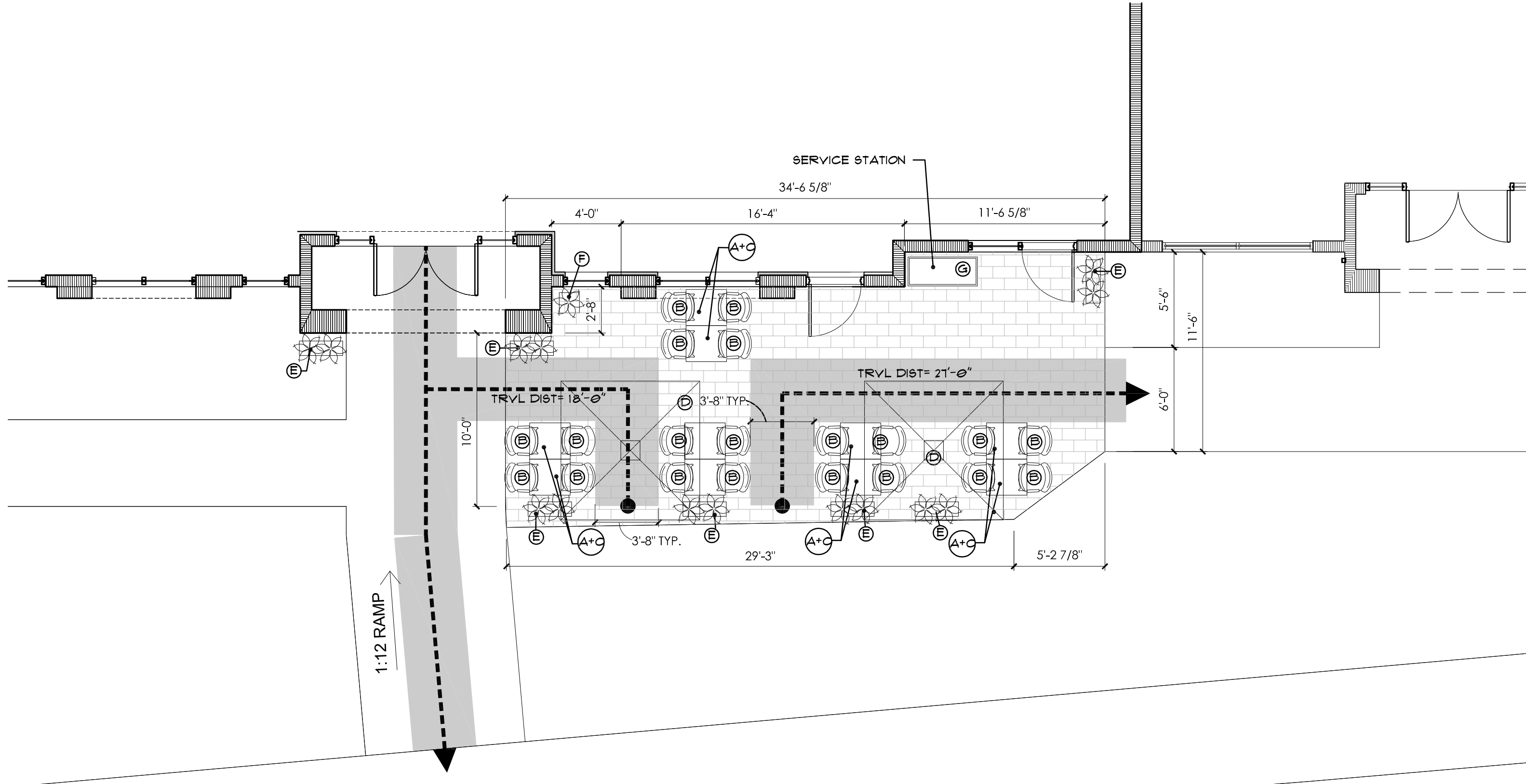
SK-2

MHK ARCHITECTURE

03/06/2024

MHK ARCHITECTURE COPYRIGHT © 2024

TUE 26 MAR 2024 12:07PM EST \\MSKSERVER\PROJECTS\24077_01_PIZZA_CENTRAL_MASTER_01_PIZZA_CDD_KENNEDY\03_DRAWINGS\01_PDF\03_ENTITLEMENTS\WORKING FILES\24077_MASTER_01_PIZZA_CDD.DWG



FLOOR PLAN LEGEND	
	INDICATES CMU WALL
	TRAVEL DISTANCE
	# OF SEATS IN SET

OCCUPANCY CALCS (FBC / FFPC)	
(PER FBC 2020 TABLE 1004.5, NFPA 1.3.1.2)	
UNCOVERED DINING	438 SF @ 1/8 SF NET = 29 PERSONS
TOTAL	29 PERSONS

SEATING CALCS:	
(10) 20" X 25" SQUARE @ 2 SEATS EA	= 20 SEATS
TOTAL SEATS:	= 20 SEATS
TOTAL TABLES:	= 10 TABLES

PARKING CALCULATIONS:	
TOTAL PARKING SPACES REQUIRED	12
TOTAL PARKING SPACES PROVIDED	31

PROPOSED OUTDOOR DINING LAYOUT
SCALE: 3/16" = 1'-0"

A TABLES (10)
(COLOR: STAINED WOOD, BLACK METAL)



B CHAIRS (20)
(COLOR: STAINED WOOD, BLACK METAL)

Industrial seating

Henry series

Product #	Description	Finish Shown
JS68CASH-SB	Side chair	Sand Black
JS68BNTW-RU	Barstool	Distressed Sand Black
JS800BASH-SB	Backless barstool	Sand Black

Materials | welded tubular steel, ash wood
Metal Finish | distressed, sand black powder coat
Wood Finish | natural, sature ash
Upholstery | vinyl/fabric/COM (Drawings pg. 99 - 103)

Product Dimensions

Chairs (20) (Color: Stained Wood, black metal)

54 | blmseating.com

D UMBRELLAS (2)
W: 8'-0" x L: 8'-0" x H: 11'-2"
FRAME COLOR: BLACK

SUMMER Collection

Our Summer model offers the customary Poggesi quality and finishes, and has no rival when it comes to value and price. The summer model features a soft bellow and 360° rotation. It is best suited for Patios, pool decks and gardens.

UMBRELLA FRAME	Cantilever	VALANCE	Available Upon Request (+5%)
SHAFT	Aluminum 3.54" x 3.54" x 0.1" (90 x 90 x 2.5 mm)	VENT	Soft
	Aluminum 3.15" x 1.97" x 0.08" (80 x 50 x 2 mm)	DOUBLE VENTS	----
NUMBER OF RIBS	8 Ribs	CANOPY TILT	No
RIB MEASUREMENTS	Aluminum 1.38" x 0.79" x 0.08" (3.50 x 2 x 0.20 cm)	CANOPY HEIGHT	Fixed
INTERNALLY REINFORCED	----	UMBRELLA ROTATION	360°
NUTS, BOLTS, SCREWS	Stainless Steel	CRANK	Included
ALUMINUM COATING	Powder Coating	EQUIPPED FOR CURTAINS	Available Upon Request
OPENING / CLOSING	One Winches w/ Cable	LOGOS	Available Upon Request
RIB JOINTS	Nylon Triangle With Rivets	FABRIC & VELCRO GUTTERS	Available Upon Request
CANOPY	Awning Grade Dyed Acrylic or Sunbrella	WEIGHT OF STRUCTURE W/ FABRIC	Approx. 66 lbs. (30 kg)

C FLAT TECH KX22 22" x 22"
SELF-STABILIZING BLACK TABLE BASE



PLANT OPTIONS

26" Sansevieria Artificial Plant
Rectangular Planter - 10" L x 30" W x 15" H

3.5' Areca Palm Tree UV Resistant
(Indoor/Outdoor)
Round Planter - 14" Diameter x 14" H

G SERVICE STATION (1)
D: 1'-8" x W: 4'-0" x H: 3'-0"



OUTDOOR STRING LIGHTS
(2 STRANDS, 15 BULBS EACH)

3 FT

3 inches

2 inches

Heavy-Duty Commercial Grade String Lights

- PVC Cable Jacket
- Wire Insulation
- High Grade Copper
- 18 Gauge Rubber Wire
- Parallel Circuit (If one bulb burnt, the others will steady lit)

2FT 3FT 1FT

48FT with 15 sockets + 18 bulbs (3 spare included)

MISTER 01 PIZZA

FURNITURE PACKAGE

SK-3

03/06/2024
MHK ARCHITECTURE COPYRIGHT © 2024
MHK ARCHITECTURE