

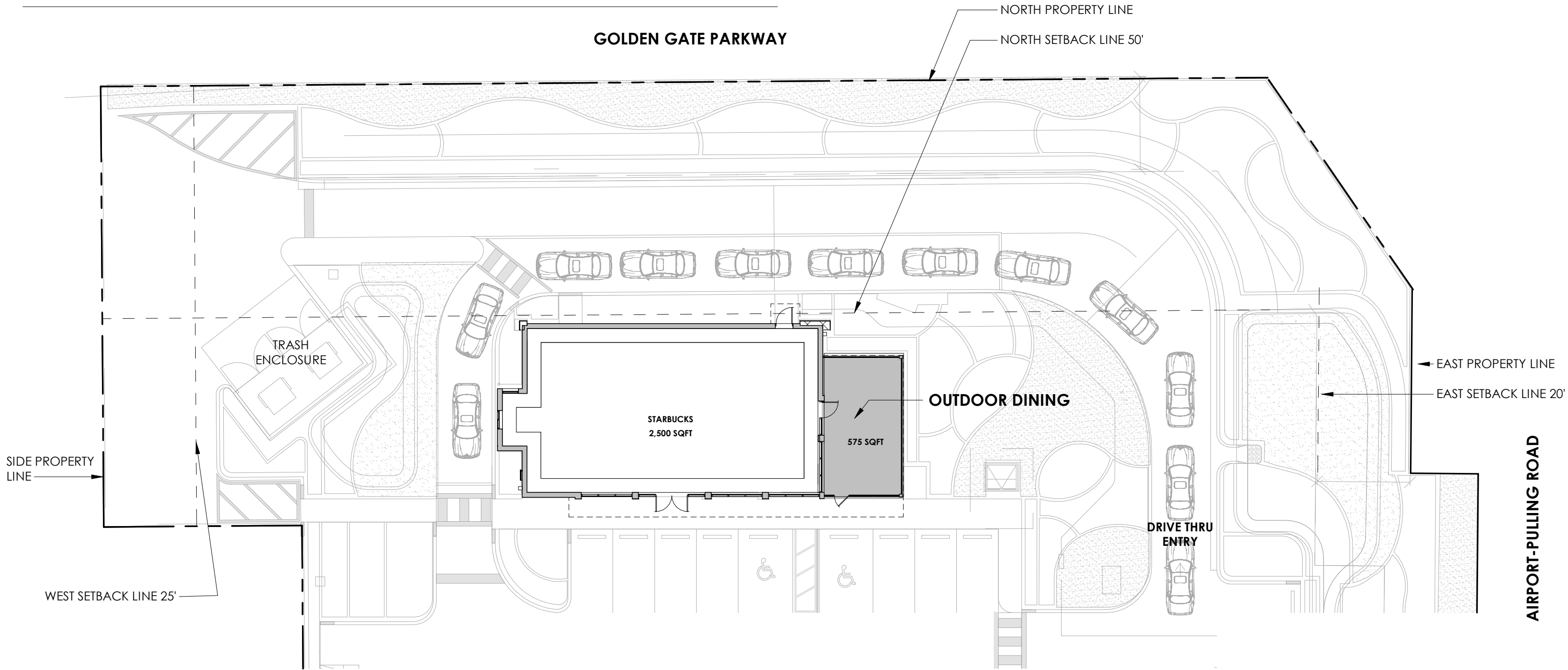
MASTER PLAN (SUMMARY)

SITE AREA: 109,248 SQUARE FEET / 2.47 ACRES (UPDATE AFTER SURVEY)

THIS PROJECT IS SUBJECT TO THE FEMA FLOOD AE 9
 ZONING: HC - HIGHWAY COMMERCIAL
 MAXIMUM HEIGHT: 3 STORIES AND 42 FEET, MEASURED FROM 1ST FLOOR FEMA ELEVATION

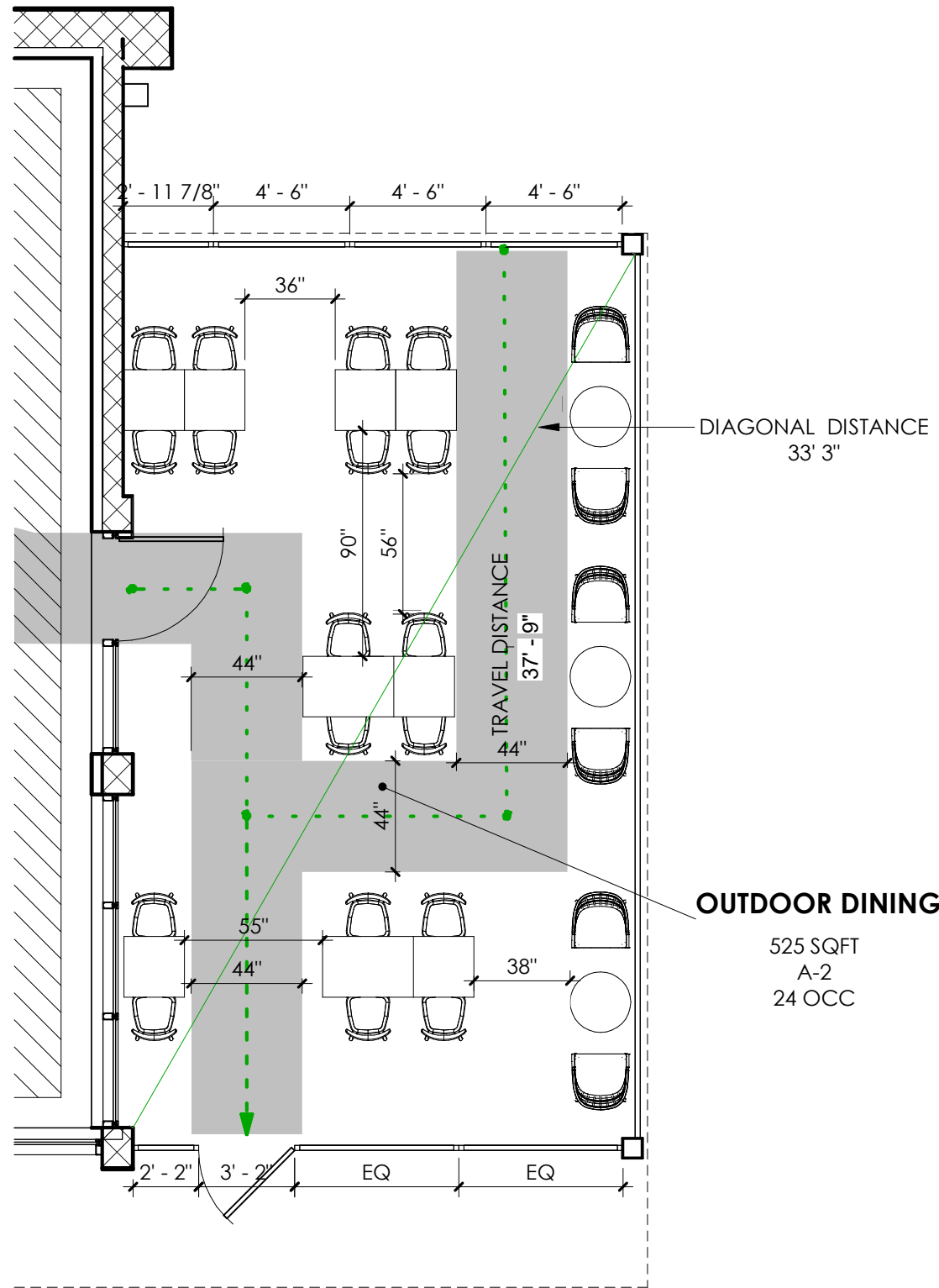
MAX LOT COVERAGE (SEC 56-40)
 BUILDING HEIGHT LESS THAN 30' FEET = 30%
 PRIMARY BUILDINGS: 30% OF 109,248 S.F. = 32,774.4 SQUARE FEET

BUILDING SETBACKS "YARDS" (SECTION 58-506)
 FRONT (AIRPORT): 20'
 FRONT (GOLDEN GATE): 50'
 SIDE: 25'
 REAR: 25'



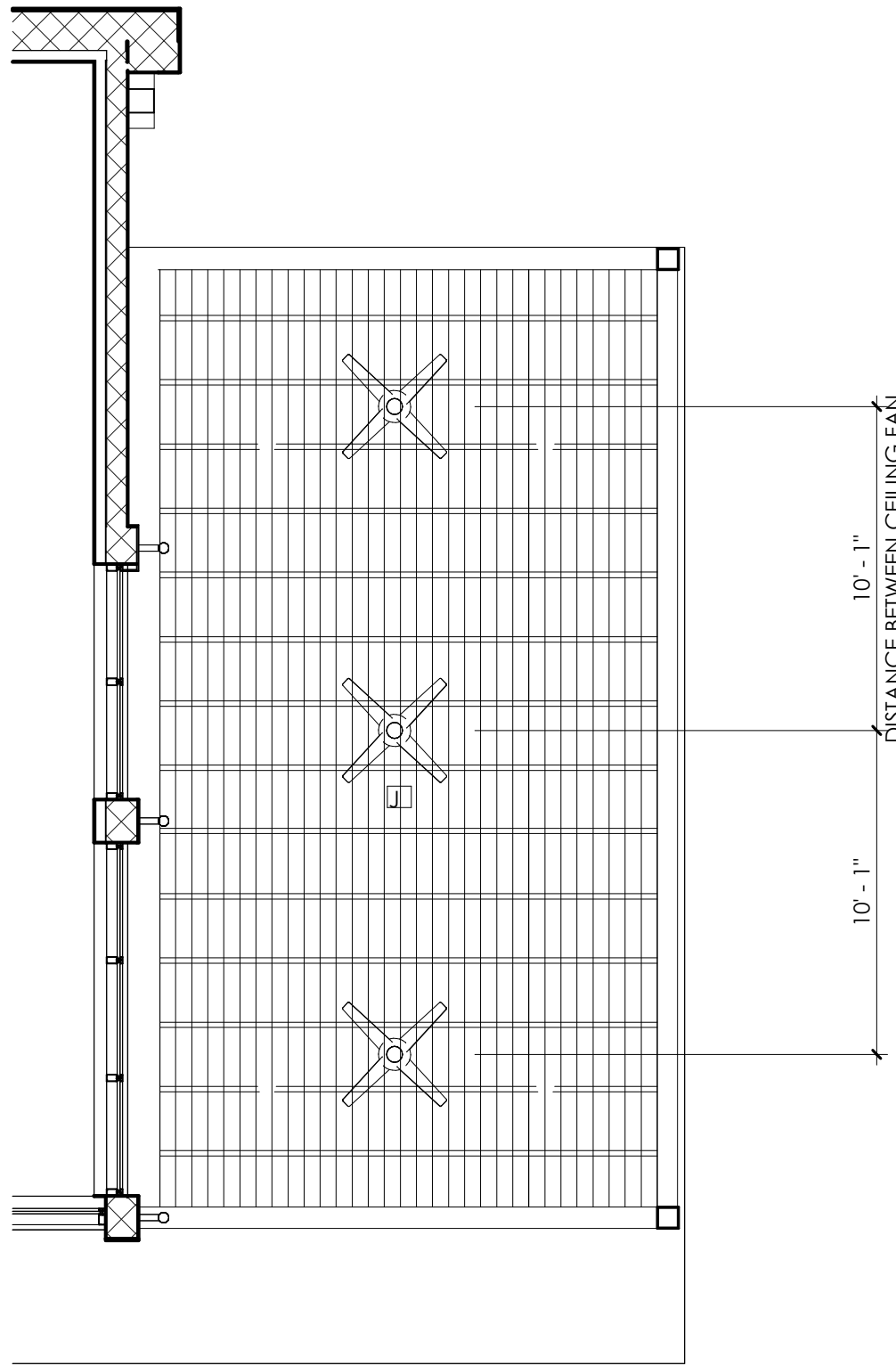
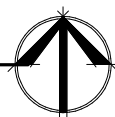
PROJECT SITE PLAN
 NTS ①

STARBUCKS BUILDING
 2024-05-09
 SK-2 | MHK ARCHITECTURE
MHK ARCHITECTURE COPYRIGHT © 2024

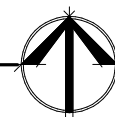


LIFE SAFETY - GROUND FLOOR FURNITURE PLAN

1 LIFE SAFETY PLAN
SCALE: 3/16" = 1'-0"



2 GROUND FLOOR RCP
SCALE: 3/16" = 1'-0"



LIFE SAFETY LEGEND

- INDICATES CMU WALL
- CEILING MOUNTED SIGNAGE / DIRECTION
- TRAVEL DISTANCE
- PATH OF TRAVEL
L.C.P.T. LONGEST COMMON PATH OF TRAVEL
L.E.A.T.D. LONGEST EXIT ACCESS TRAVEL DISTANCE

- MAIN DINING ROOM NAME
- XXX sf RELEVANT AREA CALCULATION
- X-X OCCUPANT TYPE
- XX OCC. OCCUPANT LOAD

OCCUPANCY LOAD CALCULATIONS

(PER FBC 2020 TABLE 1004.5, NFPA 7.3.1.2)

| | FBC | FFPC |
|-----------------------|-------------------|---------------|
| TABLE SEATING: S.F | 525 SQFT / 15 S.F | 525 SQFT / 15 |
| TOTAL ALLOWED: | 35 | 35 |
| TOTAL PROPOSED: | 24 | 24 |

TOTAL TABLES: 12
TOTAL SEATS: 24

LIGHTING

- 8" ROUND RECESSED GENERAL DOWN LIGHT
- J BOX
- EXTERIOR SCONCE LIGHT FIXTURE 8W LED LIGHTING FIXTURE
- 60" CEILING FAN W/ LIGHTING FIXTURE

*DIMENSIONS ARE TO CENTER LINE OF FIXTURE; U.N.O.



LIGHTING FIXTURE
WESTWOOD
8W LED LIGHTING FIXTURE



FENCE MODULE



GATE MODULE

PATIO FENCE
ALUMINUM FRAME -
STEEL MESH AND FEET

ROUNDED TABLE CROWN
WORKS
Top 24" Round Cafe



DINING CHAIR
RATANA
Hans lounge chair
w/durarope



DINING CHAIR
COAST TO COAST METAL
24x24 Tables



DINING CHAIR
RATANA
Hans café side
chair w/durarope



RECTANGULAR TABLE
COAST TO COAST METAL.
36x24 Tables



HAIKU LUXE SERIES FANS
60 inch



STARBUCKS BUILDING

2024-05-09

MHK ARCHITECTURE COPYRIGHT © 2024

SK-4

MHK ARCHITECTURE

DESCRIPTION

Westwood 904 and 904-2 are small dimmable 50 MR16 or LED luminaires. Model 904 provides downlight or uplight. Model 904-2 provides combination uplight and downlight. A square shroud option (-SQ) is available in both models, offering rectilinear styling instead of cylindrical. Both models mount directly to any wall surface or over a standard 4-inch J-box and require a remote 12-volt step-down transformer (not included). Various lenses, louvers, and color or dichroic filters can be combined - up to three at once - to create multiple lighting effects.

SPECIFICATION FEATURES

Material
Housing and hood are precision-machined from corrosion-resistant 6061-T6 aluminum billet, brass, bronze* or stainless steel. Mounting canopy is constructed from corrosion-resistant silicone aluminum, brass, bronze* or stainless steel.

Finish Painted
Fixtures constructed from 6061-T6 aluminum are double protected by an ROHS* compliant chemical film undercoating and polyester powdercoat paint finish, surpassing the rigorous demands of the outdoor environment. A variety of standard colors are available. Brass, Bronze,* Copper or Stainless Steel fixtures are left unpainted to reveal the natural beauty of the material will patina naturally over time.

Hood
Hood is removable for easy relamping and accepts up to three internal accessories at once (lenses, louvers, filters) to achieve multiple lighting effects. Weep holes prevent water collection on the uplight position.

Gasket
Housing and hood are sealed with a high temperature silicone o-ring gasket to prevent water intrusion.

Lens
Tempered glass lens, factory sealed with high temperature adhesive to prevent water intrusion and breakage due to thermal shock.

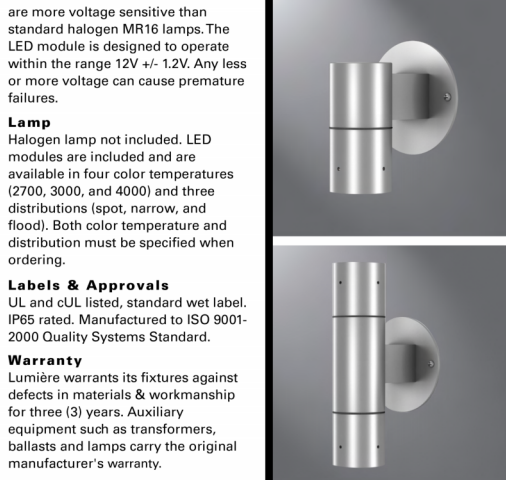
Mounting
Both models mount directly to wall surface or over a standard 4" J-box and require remote 12V step-down transformer (not included). Model 904 provides downlight or uplight. Model 904-2 provides non-adjustable uplight and downlight. Lumière's exclusive Siphon Protection System (S.P.S.) prevents water from siphoning into the fixture through its own lead wires.

Hardware
Stainless steel hardware is standard to provide maximum corrosion-resistance.

Socket
Ceramic socket with 250° C Teflon® coated lead wires and GU5.3 bi-pin base.

Electrical
Remote 12V transformer required (not included). Initial power draw on LED equipped fixtures is 12 watts. When sizing transformer use 12 watts per LED fixture. Nominal power draw after start up is 8 watts. Also, LEDs

| | |
|-------------|------|
| Catalog # | Type |
| Project | |
| Comments | Date |
| Prepared by | |

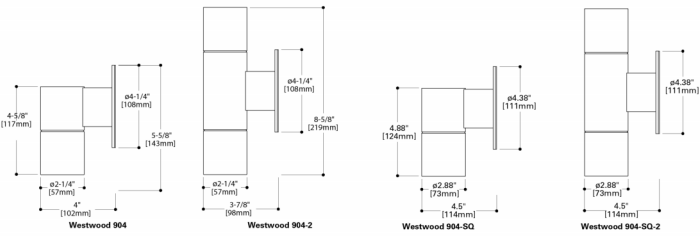


904
904-2
WESTWOOD

8W LED Wall
IP65
ROHS* Compliant

WORKS WITH **SURAA**

TECHNICAL Data
8W LED, L70/60,000 hours at 25°C
Low Voltage: 50W Halogen MR16



ORDERING INFORMATION

| Domestic Preferences ² | Series | Source (for LED, select from each column and combine) | Voltage | Finish |
|--|--|--|---------|---|
| [Blank]-Standard BAA=Buy American Act | 904=LED Westwood Up or Down Wall Fixture Single 904-2=MR16 Westwood Up/Down Wall Fixture-Dual Head Round 904-UD=LED Westwood Up/Down Wall Fixture-Dual Head, Round 904-SQ-2=MR16 Westwood Up/Down Wall Fixture-Single Head, Square 904-SQ-UD=LED Westwood Up/Down Wall Fixture-Dual Head, Square | 50MR16=50W max. Halogen MR16 (lamp not included) 8LED=8W LED 5LED=5W LED 27=2700K 30=3000K 40=4000K AM=Amber (685-595nm) | 12=12V | Painted BK=Black BZ=Bronze CS=City Silver VE=Verde WT=White Premium Finish NBR=Natural Brass NCP=Natural Copper NBZ=Natural Bronze* NSS=Natural Stainless Steel |
| | | 10=10° Spot 25=25° Narrow 36=36° Wide 25=25° Narrow | | |

NOTES: 1. Consult factory for other voltages. 2. Only product configurations with this designated prefix are built to be compliant with the Buy American Act of 1933 (BAA). Please refer to DOMESTIC PREFERENCES website for more information. Components shipped separately may be separately analyzed under domestic preference requirements. 3. Accessories sold separately will be separately analyzed under domestic preference requirements. Consult factory for further information.



Specifications and dimensions subject to change without notice.

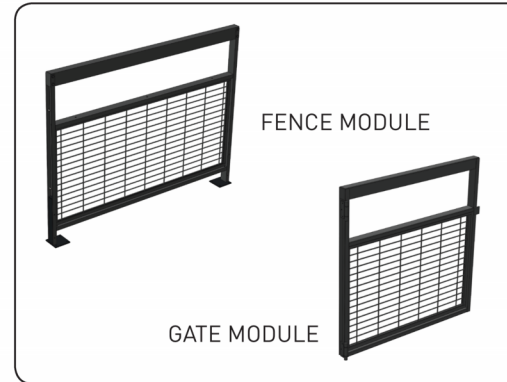
PSS25094EN
12/20/21
1 of 3

LIGHTING FIXTURE - WESTWOOD
8W LED LIGHTING FIXTURE

21486-21487



STARBUCKS FENCE



Description:
Create the perfect atmosphere with this exclusive Starbucks Patio Fencing system. This flexible sectional design can be configured to fit Starbucks Patios. Finished with Starbucks classic Black and built with 100% recyclable aluminum.
Made in USA.

Specs:

Materials:

- Aluminum Frame
- Steel Mesh and Feet

Finish:

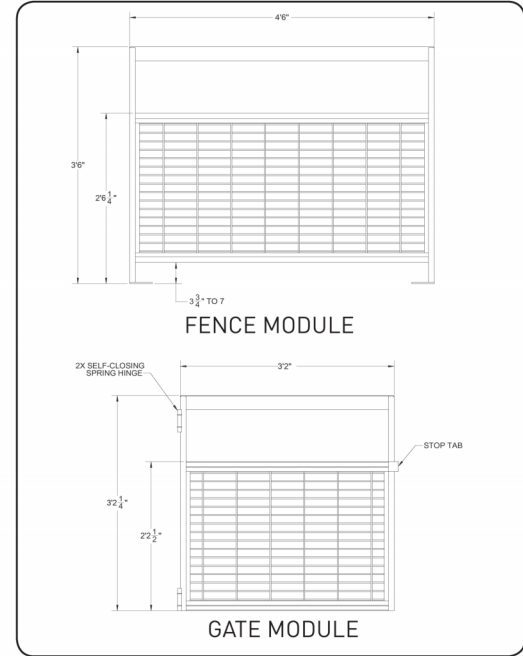
- Powder Coated Starbucks Flat Black, #MT0028

Size:

- Fence, 42" high x 54" wide x 2" thick
- 3" gap between modules
- 4" wide plate at foot
- Gate, 38-1/4" high x 38" wide x 2" thick.

Weight:

- 33 lbs per module



How to Request a Quote:
Send your Patio Layout along with dimensions include openings and gates to Awnex.

Contact:
Sales@awnexinc.com 770-704-7140
www.awnexinc.com

260 Valley Street, Suite 100, Ball Ground, GA 30107

PATIO FENCE
ALUMINUM FRAME - STEEL MESH AND FEET

STARBUCKS BUILDING

2024-05-09

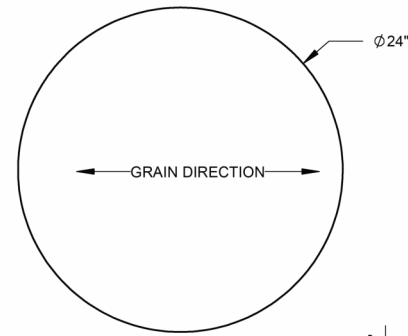
MHK ARCHITECTURE COPYRIGHT © 2024

SK-5

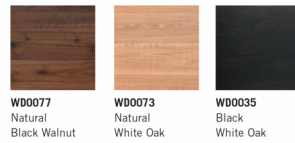
MHK ARCHITECTURE

CROW WORKS

TOP, 24" ROUND CAFÉ



WOOD FINISH OPTIONS



WB0077 Natural Black Walnut
WB0073 Natural White Oak
WB0035 Black White Oak

| | |
|--------------------------|--|
| PRODUCT NAME | Top, 24" Round Café |
| ITEM NUMBER | TTC-1.06-R24-FRB |
| SUPPLIER CONTACT | 888.811.2769 info@crowworks.com |
| HARDWARE | Not included |
| MATERIAL | White Oak or Black Walnut |
| EDGE PROFILE | Full Round Blunt Edge |
| DIMENSIONS | 24" diam. x 1-1/16" thick |
| WEIGHT | 10.99 lbs |
| CARE INSTRUCTIONS | <ul style="list-style-type: none"> • Use a solution of mild soap and warm water for daily cleaning. • Avoid abrasive soaps or cleansers. • Spray soap solution and wipe clean with a cloth. • Always wipe up moisture promptly and dry with a soft cloth. • Wood will expand and contract with seasonal humidity changes. Maintain consistent humidity levels to minimize movement in the wood and prevent warping. |
| NOTES | Includes pilot holes |

AMERICAN MADE COMMERCIAL FURNITURE

21840, 21841, 21842

CROWWORKS.COM

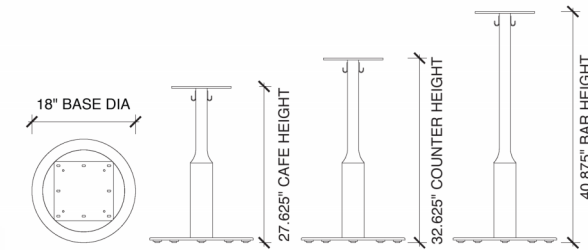
FINISH VARIES BY DESIGN ID

CAFE TABLE BASE - 18" BASE
DATE: 02/07/2020

ITEM #:

west elm
BUSINESS TO BUSINESS

IMAGES + DIMENSIONS



SPECIFICATION

PRODUCT NAME: Cafe Table Base - 18" Base

ITEM NUMBER:

SUPPLIER CONTACT: (p) 844-859-6860
(e) starbucks@wsgc.com

AVAILABLE HEIGHTS: Cafe (30"H), Counter (33.5"H), Bar (42"H) by others

PRODUCT WEIGHT:

MATERIAL USED: Steel, plastic feet

METAL FINISH: MT0028 Flat Black Powder Coat

HARDWARE USED: Fixed plastic glide and metric machine screws

TESTING STANDARD: Starbucks Standard Testing

CARE INSTRUCTIONS: Wipe clean with a soft, damp cloth

ASSEMBLY: Fully Assembled

Guidelines
This table base is ready for power if needed; simply order a Power Extension and feed through the table base accordingly —see page 2 for details and diagrams.

DID 21449, 21450 and 21451

ROUNDED TABLE CROWN WORKS
Top 24" Round Cafe

STARBUCKS BUILDING

SK-6

2024-05-09
MHK ARCHITECTURE COPYRIGHT © 2024
MHK ARCHITECTURE

RATANA

Starbucks Supplier Cutsheet

Supplier Information

- Name: Ratana International Ltd.
- Address: 8310 Manitoba Street, Vancouver, BCV5X 3A6, Canada
- Contact Person: Winnie Ng
- Email: winnie@ratana.com
- Phone Number: 1-866-919-1881 ext. 319

Product name and number

- Name: Hans Lounge Chair w/Durarope™
- Item no.: FN66501BLK, FN66501FOS
- Colors: Black, Fossil



Country of origin

- Manufacture location: China

Materials

- Aluminum
- Stainless Steel
- Durarope™

Finishes used

- Powder coating: TIGER Drylac® (49 Series)

Cleaning and maintenance instructions

We do recommend a periodic cleaning to remove any dirt, dust or oils that may collect over time to keep your resin looking new. The resin may be washed with mild detergent and water when it becomes soiled using a wet sponge, cloth or a soft plastic bristle brush. Rinse and allow to dry thoroughly before use. Do not use solvent, souring agents, carbon tetrachloride, undiluted bleach, janitorial cleaners, or gasoline.

Certifications

- Passed the ANSI/BIFMA X5.4-2012 Standard
- Complied with the Global Recycled Standard (GRS) - Version 4.0
- Passed the California Proposition 65
- Passed the SVHC screening regarding Regulation (EC) No 1907/2006 concerning the REACH

Assembly and installation instructions

- No assembly required

Weight and dimensions

- Net weight: 21 LBS
- Product dimensions: L28.5" x W25" x H29"
- Package dimensions: L29.5" x W26" x H30"
- Package units: 1 pc/box
- Dimensions drawings as attached

23448 BLACK
23449 FOSSIL GREY

(HANS 2.0)

February 6, 2023

DINING CHAIR

RATANA

Hans lounge chair w/durarope

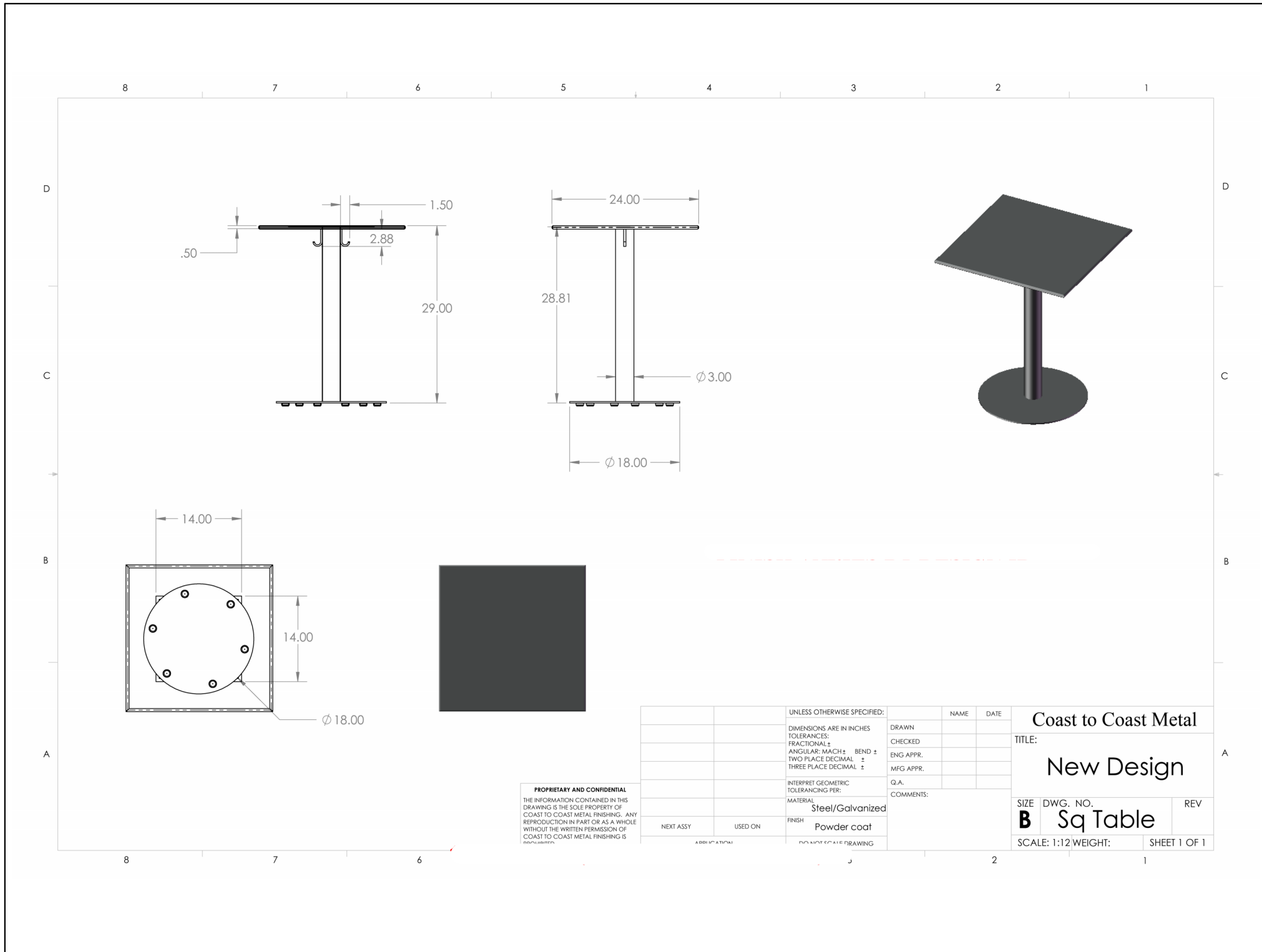
STARBUCKS BUILDING

SK-7

MHK ARCHITECTURE

2024-05-09

MHK ARCHITECTURE COPYRIGHT © 2024



| UNLESS OTHERWISE SPECIFIED: | | NAME | DATE |
|--------------------------------------|---------|-----------|------|
| DIMENSIONS ARE IN INCHES | | DRAWN | |
| TOLERANCES: | | CHECKED | |
| FRACTIONAL ± | | ENG APPR. | |
| ANGULAR: MACH ± BEND ± | | MFG APPR. | |
| TWO PLACE DECIMAL ± | | Q.A. | |
| THREE PLACE DECIMAL ± | | COMMENTS: | |
| INTERPRET GEOMETRIC TOLERANCING PER: | | | |
| MATERIAL: Steel/Galvanized | | | |
| FINISH: Powder coat | | | |
| NEXT ASSY | USED ON | | |

PROPRIETARY AND CONFIDENTIAL
 THE INFORMATION CONTAINED IN THIS DRAWING IS THE SOLE PROPERTY OF COAST TO COAST METAL FINISHING. ANY REPRODUCTION IN PART OR AS A WHOLE WITHOUT THE WRITTEN PERMISSION OF COAST TO COAST METAL FINISHING IS PROHIBITED.

Coast to Coast Metal
 TITLE:
New Design
 SIZE DWG. NO. REV
B Sq Table
 SCALE: 1:12 WEIGHT: SHEET 1 OF 1

DINING CHAIR
 COAST TO COAST METAL
 24x24 Tables

RATANA

Starbucks Supplier Cutsheet

Supplier Information

- Name: Ratana International Ltd.
- Address: 8310 Manitoba Street, Vancouver, BCV5X 3A6, Canada
- Contact Person: Winnie Ng
- Email: winnie@ratana.com
- Phone Number: 1-866-919-1881 ext. 319

Product name and number

- Name: Hans Café Side Chair w/Durarope™
- Item no.: FN66511BLK, FN66511FOS
- Colors: Black, Fossil



Country of origin

- Manufacture location: China

Materials

- Aluminum
- Stainless Steel
- Durarope™

Finishes used

- Powder coating: TIGER Drylac® (49 Series)

Cleaning and maintenance instructions

We do recommend a periodic cleaning to remove any dirt, dust or oils that may collect over time to keep your resin looking new. The resin may be washed with mild detergent and water when it becomes soiled using a wet sponge, cloth or a soft plastic bristle brush. Rinse and allow to dry thoroughly before use. Do not use solvent, souring agents, carbon tetrachloride, undiluted bleach, janitorial cleaners, or gasoline.

Certifications

- Passed the ANSI/BIFMA X5.4-2012 Standard
- Complied with the Global Recycled Standard (GRS) - Version 4.0
- Passed the California Proposition 65
- Passed the SVHC screening regarding Regulation (EC) No 1907/2006 concerning the REACH

Assembly and installation instructions

- No assembly required

Weight and dimensions

- Net weight: 14 LBS
- Product dimensions: L23" x W22.25" x H30.5"
- Package dimensions: L35" x W22.5" x H39.5"
- Package units: 4 pcs/box
- Dimensions drawings as attached

23446 BLACK
23447 FOSSIL GREY

(HANS 2.0)

February 6, 2023

DINING CHAIR

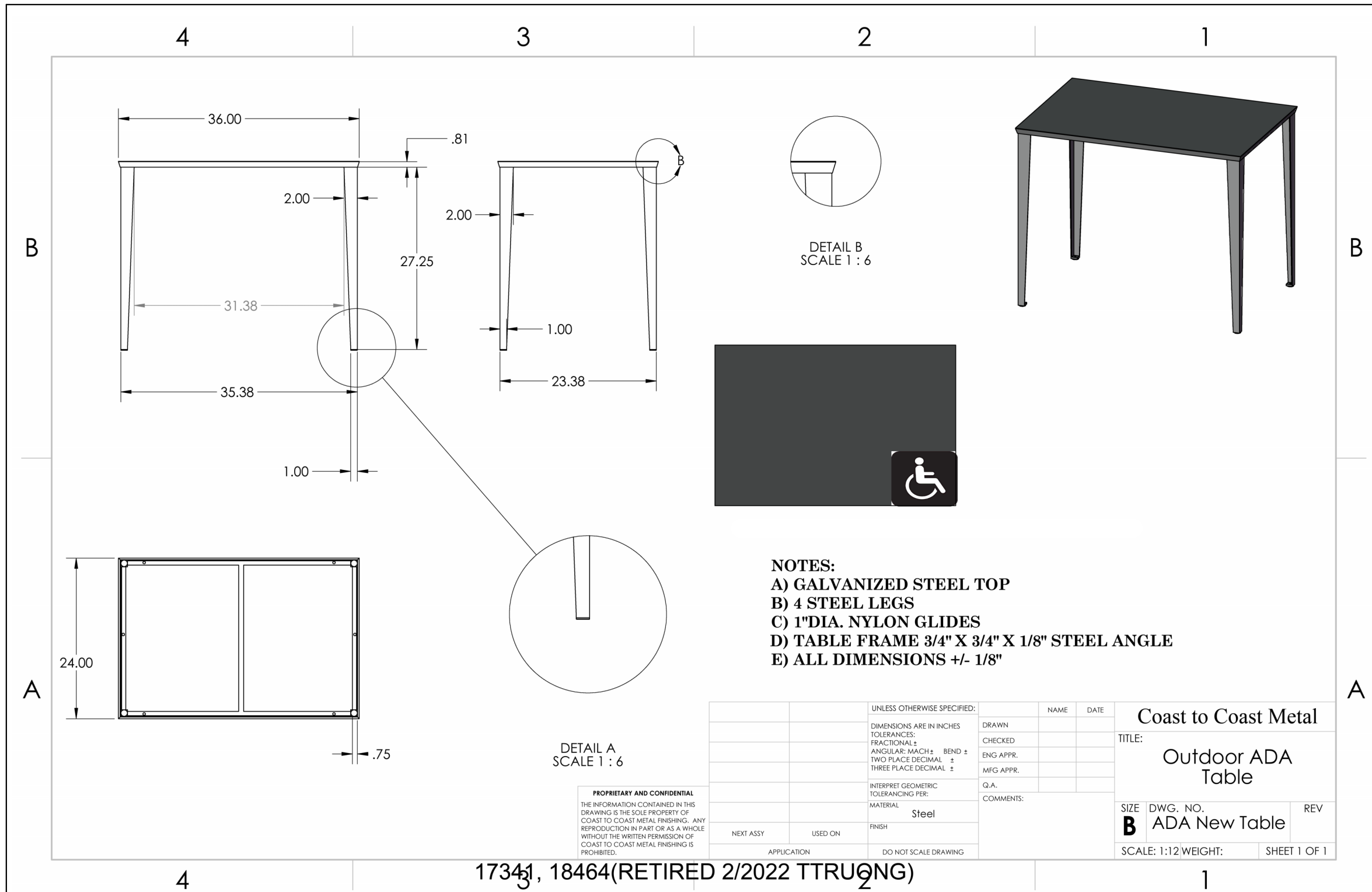
COAST TO COAST METAL

24x24 Tables

STARBUCKS BUILDING

SK-9

2024-05-09
MHK ARCHITECTURE COPYRIGHT © 2024
MHK ARCHITECTURE



RECTANGULAR TABLE
 COAST TO COAST METAL.
 36x24 Tables

Haiku Luxe Series Fans

TECHNICAL SPECIFICATIONS



Elevate your style and comfort with Haiku Luxe Series fans. Available in a variety of bold finishes, these fans establish a new standard for quality, design, technology, and convenience.

QUALITY, ELEGANCE, AND EFFICIENCY

- **Airfoils** — Aircraft-grade aluminum; 60-inch (1.5-meter) diameter
- **Finishes** — Brushed or polished metal, powder coat, or Artisan Replica
- **Motor** — EC motor with digital inverter drive
- **Controls** — Remote control, Haiku Home mobile app¹, Haiku Wall Control (optional), or Amazon Alexa-enabled devices (optional).
- **Onboard Sensors** — Ambient and surface temperature, relative humidity, and passive infrared sensors enable SenseME[®] technology.
- **Environment** — Indoor or covered outdoor use
- **Operational Temperature and Humidity Range** — 32° to 104° F (0° to 40° C); 20% to 90% non-condensing
- **Accessories** — Haiku Light Kit, 0–10 V Module, and Haiku Wall Control. See respective spec sheets for details. A Tall Ceiling Kit and Stabilizer Kit are available for ceilings 14 feet (4.3 m) or taller.



Airfoil Finishes



Hardware Finishes



*Available with black (AB) or white (AW) hardware finish.
**Powder coat. Available with hardware in same finish (AS or AO).

Technical Specifications — Universal Mount

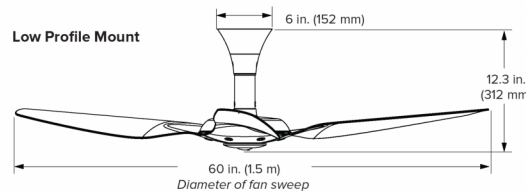
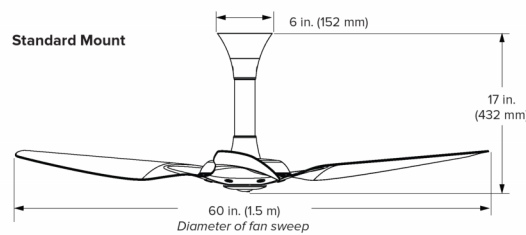
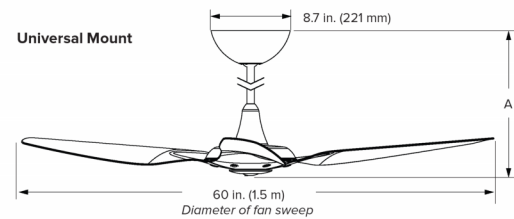
| Model number ² | S3150-X2-AX-XX-02-C-01-FXXX | |
|--|-----------------------------|------------------------------------|
| Extension tube lengths | 7 in. (178 mm) | 20 in. (508 mm) 32 in. (813 mm) |
| Height (A) | 16 in. (406 mm) | 29 in. (737 mm) 41 in. (1041 mm) |
| Tall ceiling tube lengths³ | 48 in. (1219 mm) | 60 in. (1524 mm) |
| Height (A) | 57 in. (1448 mm) | 69 in. (1753 mm) |
| Weight⁴ | 17.5 lb (8 kg) | |
| Operating voltage | 100–240 VAC, 1 Φ, 50–60 Hz | |
| Watts (min/max) | 2/28.78 W | |
| Amps (min/max) | 0.037/0.25 A | |
| Fan speed (min/max) | 35/200 RPM | |
| Sound level at max speed⁵ | < 35 dBA | |

Technical Specifications — Standard Mount

| Model number ² | S3150-A2-AX-XX-02-C-01-FXXX |
|---|-----------------------------|
| Weight⁴ | 18.5 lb (8.4 kg) |
| Operating voltage | 100–240 VAC, 1 Φ, 50–60 Hz |
| Watts (min/max) | 2.09/28.78 W |
| Amps (min/max) | 0.04/0.25 A |
| Fan speed (min/max) | 35/200 RPM |
| Sound level at max speed⁵ | < 35 dBA |

Technical Specifications — Low Profile Mount

| Model number ² | S3150-S0-AX-XX-02-C-01-FXXX |
|---|-----------------------------|
| Weight⁴ | 18.5 lb (8.4 kg) |
| Operating voltage | 100–240 VAC, 1 Φ, 50–60 Hz |
| Watts (min/max) | 2.02/18.44 W |
| Amps (min/max) | 0.04/0.25 A |
| Fan speed (min/max) | 35/175 RPM |
| Sound level at max speed⁵ | < 35 dBA |



Lead times may vary. Specifications subject to change without notice. Fan heights do not include the Haiku Light Kit.

¹ SenseME Technology and the Haiku Home app are supported by Android[™] and iOS[™]. All specifications are subject to change without notice.
² "X" indicates a placeholder number, which varies depending on finish options, when fan is installed, and other factors.
³ Optional Tall Ceiling Kit packaged separately.
⁴ The actual, precise fan weight will vary based on individual component weights and finishing.
⁵ Actual results of sound measurements in the field may vary due to sound reflective surfaces and environmental conditions.

20672 RETIRED JULY 2022



AMERICAS
HAIKUHOME.COM
855-694-2458

CANADA
HAIKUHOME.COM/CA
844-924-4277

AUSTRALIA
HAIKUHOME.COM/AU
1-300-244-277

SINGAPORE
HAIKUHOME.COM/SG
+65 6709 8500

MALAYSIA
+603 5565 0888

HAIKU LUXE SERIES FANS

60 inch

STARBUCKS BUILDING

SK-11

2024-05-09
MHK ARCHITECTURE
MHK ARCHITECTURE COPYRIGHT © 2024