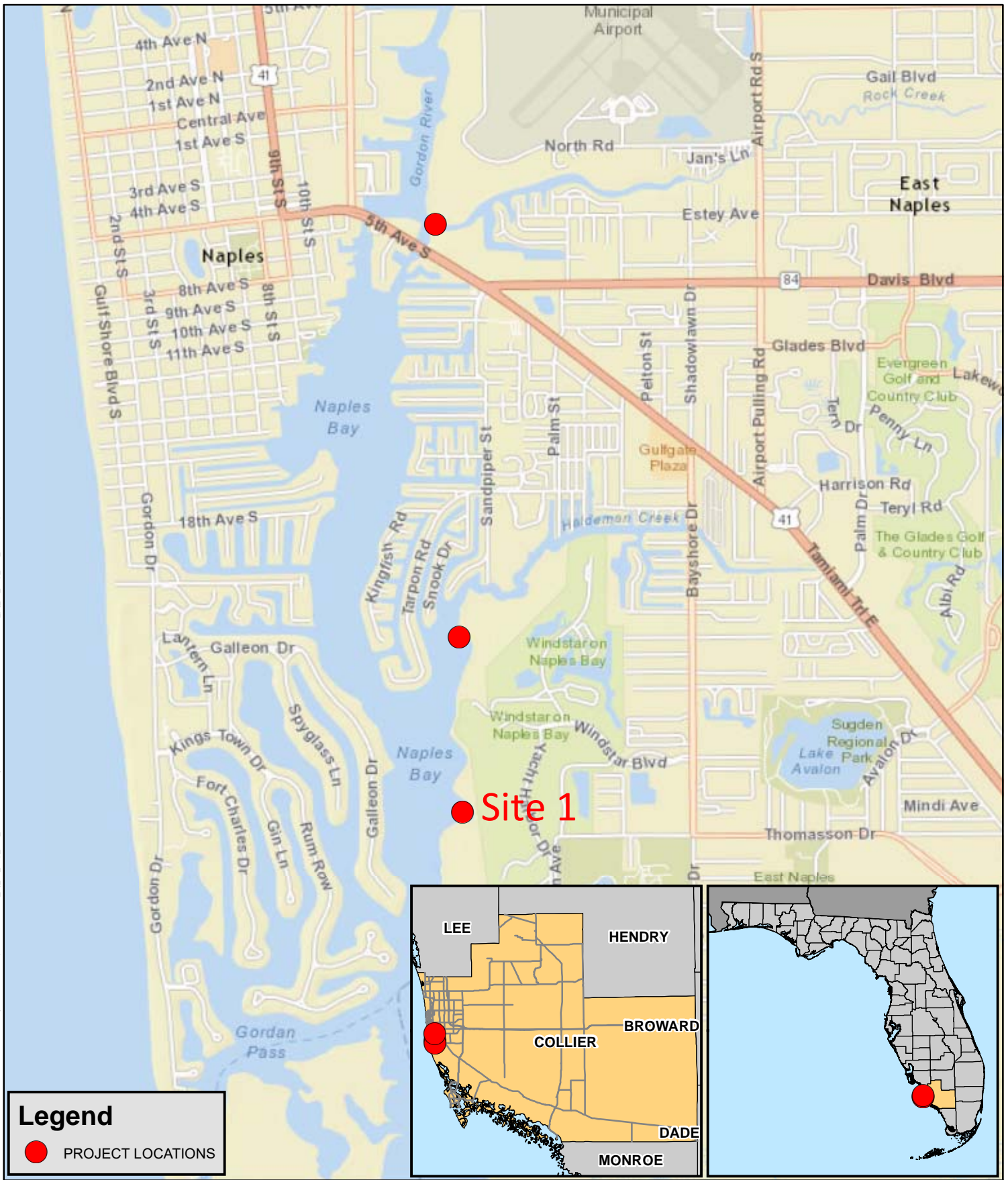


Date: 07/20/16 Rev: Date: xx/xx/xx PM: DR: GIS Analyst: TMS/JAG Map Document: 3112_p1_loc_map_JAG_20160720.mxd Project Number: 00311230.C.PDF Document: 3112_p1_loc_map_JAG_20160720.pdf Plot Size: 8.5 x 11



Legend

● PROJECT LOCATIONS

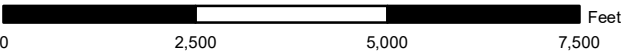


www.scheda.com

All data within this map are supplied as is, without warranty. This product has not been prepared for legal, engineering, or survey purposes. Users of this information should review or consult the primary data sources to ascertain the usability of the information.

Figure 1 - Project Location Map

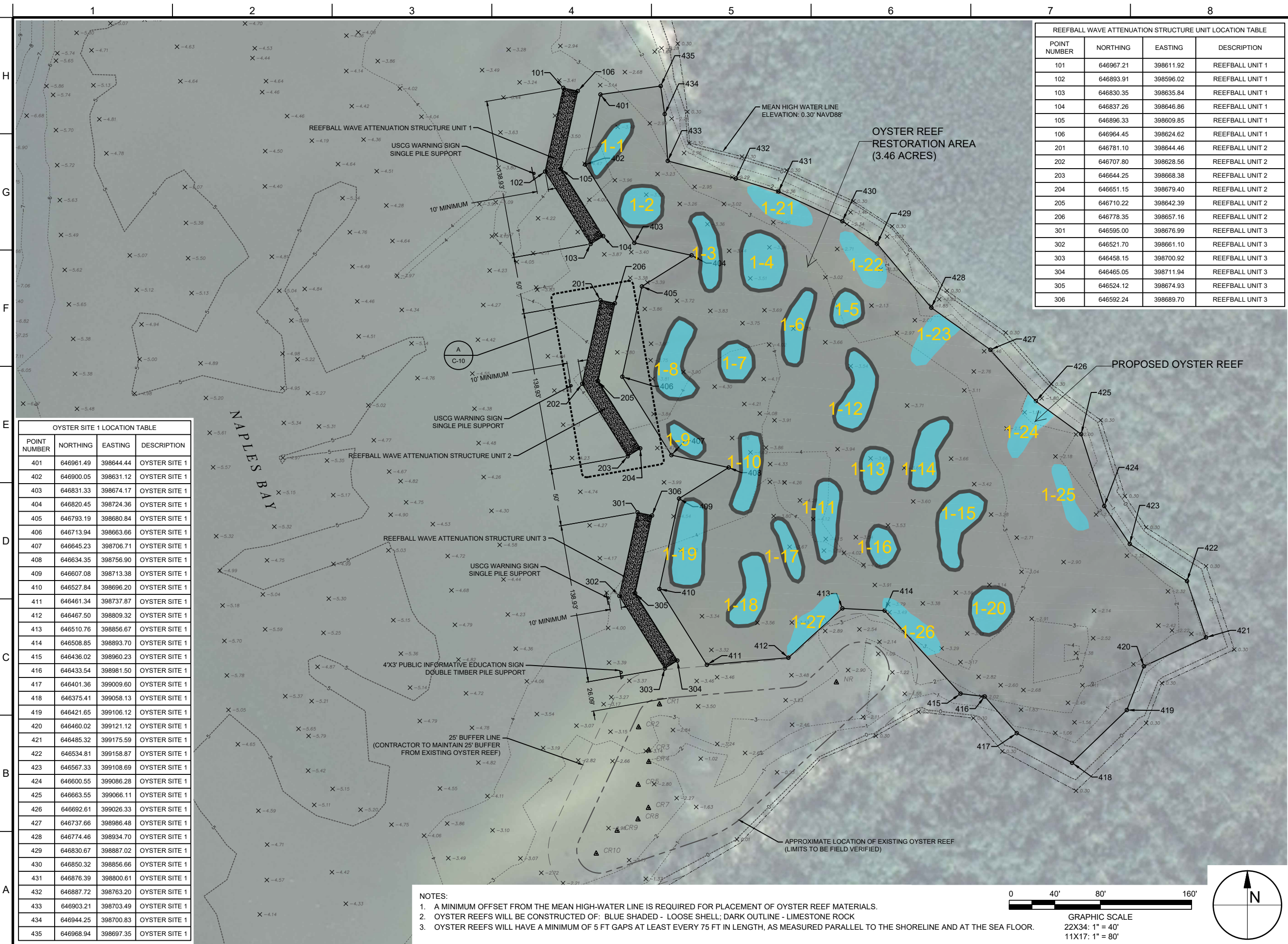
City of Naples Oyster Restoration
Collier County, Florida



Data Source:
- Scheda Ecological Associates, Inc.
Imagery Source:
- ESRI Streets

Coordinate System:
NAD 1983 Florida
State Plane East

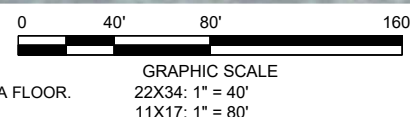




REEFBALL WAVE ATTENUATION STRUCTURE UNIT LOCATION TABLE			
POINT NUMBER	NORTHING	EASTING	DESCRIPTION
101	646967.21	398611.92	REEFBALL UNIT 1
102	646893.91	398596.02	REEFBALL UNIT 1
103	646830.35	398635.84	REEFBALL UNIT 1
104	646837.26	398646.86	REEFBALL UNIT 1
105	646896.33	398609.85	REEFBALL UNIT 1
106	646964.45	398624.62	REEFBALL UNIT 1
201	646781.10	398644.46	REEFBALL UNIT 2
202	646707.80	398628.56	REEFBALL UNIT 2
203	646644.25	398668.38	REEFBALL UNIT 2
204	646651.15	398679.40	REEFBALL UNIT 2
205	646710.22	398642.39	REEFBALL UNIT 2
206	646778.35	398657.16	REEFBALL UNIT 2
301	646595.00	398676.99	REEFBALL UNIT 3
302	646521.70	398661.10	REEFBALL UNIT 3
303	646458.15	398700.92	REEFBALL UNIT 3
304	646465.05	398711.94	REEFBALL UNIT 3
305	646524.12	398674.93	REEFBALL UNIT 3
306	646592.24	398689.70	REEFBALL UNIT 3

OYSTER SITE 1 LOCATION TABLE			
POINT NUMBER	NORTHING	EASTING	DESCRIPTION
401	646961.49	398644.44	OYSTER SITE 1
402	646900.05	398631.12	OYSTER SITE 1
403	646831.33	398674.17	OYSTER SITE 1
404	646820.45	398724.36	OYSTER SITE 1
405	646793.19	398680.84	OYSTER SITE 1
406	646713.94	398663.66	OYSTER SITE 1
407	646645.23	398706.71	OYSTER SITE 1
408	646634.35	398756.90	OYSTER SITE 1
409	646607.08	398713.38	OYSTER SITE 1
410	646527.84	398696.20	OYSTER SITE 1
411	646461.34	398737.87	OYSTER SITE 1
412	646467.50	398809.32	OYSTER SITE 1
413	646510.76	398856.67	OYSTER SITE 1
414	646508.85	398893.70	OYSTER SITE 1
415	646436.02	398960.23	OYSTER SITE 1
416	646433.54	398981.50	OYSTER SITE 1
417	646401.36	399009.60	OYSTER SITE 1
418	646375.41	399058.13	OYSTER SITE 1
419	646421.65	399106.12	OYSTER SITE 1
420	646460.02	399121.12	OYSTER SITE 1
421	646485.32	399175.59	OYSTER SITE 1
422	646534.81	399158.87	OYSTER SITE 1
423	646567.33	399108.69	OYSTER SITE 1
424	646600.55	399086.28	OYSTER SITE 1
425	646663.55	399066.11	OYSTER SITE 1
426	646692.61	399026.33	OYSTER SITE 1
427	646737.66	398986.48	OYSTER SITE 1
428	646774.46	398934.70	OYSTER SITE 1
429	646830.67	398887.02	OYSTER SITE 1
430	646850.32	398856.66	OYSTER SITE 1
431	646876.39	398800.61	OYSTER SITE 1
432	646887.72	398763.20	OYSTER SITE 1
433	646903.21	398703.49	OYSTER SITE 1
434	646944.25	398700.83	OYSTER SITE 1
435	646968.94	398697.35	OYSTER SITE 1

- NOTES:
- A MINIMUM OFFSET FROM THE MEAN HIGH-WATER LINE IS REQUIRED FOR PLACEMENT OF OYSTER REEF MATERIALS.
 - OYSTER REEFS WILL BE CONSTRUCTED OF: BLUE SHADED - LOOSE SHELL; DARK OUTLINE - LIMESTONE ROCK
 - OYSTER REEFS WILL HAVE A MINIMUM OF 5 FT GAPS AT LEAST EVERY 75 FT IN LENGTH, AS MEASURED PARALLEL TO THE SHORELINE AND AT THE SEA FLOOR.



90% SUBMITTAL PERMIT APPLICATION PURPOSES ONLY NOT FOR CONSTRUCTION

PROJECT TITLE
NAPLES BAY OYSTER RESTORATION CONSTRUCTION DRAWINGS
CITY OF NAPLES, COLLIER COUNTY, FLORIDA

Always call 811 two full business days before you dig
Sunshine811.com

PRELIMINARY DRAWINGS: THESE DRAWINGS ARE NOT IN FINAL FORM, BUT ARE BEING TRANSMITTED FOR REVIEW.

NO	ZONE	REVISIONS / SUBMISSIONS	DATE

PROJECT NO	
DATE	
DESIGNED	
DRAWN	
CHECKED	
REVIEWED	
SCALE	AS SHOWN

DRAWING TITLE
SITE PLAN SITE 1
SHEET 1 OF 3

Location of
additional single
piling not shown in
original design
drawings.

148000

Piling for datasonde and educational signage

-81.784238, 26.11065



Site 1

Reef (Site-number)	Area (sq ft)	Area (acres)	Reef Center Coordinates (feet NAD83)	
Chevron-1	1881	0.043	398602.9	646895.1
Chevron-2	1881	0.043	398635.5	646709.0
Chevron-3	1881	0.043	398668.0	646522.9
1-1	734	0.017	398652.8	646912.6
1-2	1224	0.028	398679.7	646863.2
1-3	1229	0.028	398741.6	646822.1
1-4	1494	0.034	398789.0	646815.6
1-5	550	0.013	398862.2	646775.6
1-6	1256	0.029	398814.6	646760.0
1-7	936	0.021	398766.7	646726.1
1-8	1235	0.028	398705.3	646711.7
1-9	562	0.013	398718.0	646660.8
1-10	1181	0.027	398778.5	646628.3
1-11	1605	0.037	398843.9	646586.4
1-12	1476	0.034	398879.1	646710.6
1-13	473	0.011	398888.8	646636.1
1-14	941	0.022	398929.0	646651.9
1-15	1461	0.034	398956.1	646583.2
1-16	647	0.015	398890.8	646567.6
1-17	563	0.013	398811.2	646564.2
1-18	1180	0.027	398783.1	646527.1
1-19	1810	0.042	398724.5	646568.9
1-20	1230	0.028	398981.3	646508.5
1-21	990	0.023	398799.7	646866.1
1-22	883	0.020	398875.3	646814.7
1-23	871	0.020	398936.4	646744.8
1-24	950	0.022	399019.2	646667.5
1-25	462	0.011	399059.8	646608.1
1-26	826	0.019	398917.1	646493.5
1-27	1053	0.024	398829.3	646497.8
Site 1 Total Area	33465	0.768		

Reef (Site-number)	ROCKS			SHELL		
	Area Rocks (sq ft)	Ave. Thickness Rock (ft)	Est. Rock (tons)	Shell reef height (ft)*	Volume Shell (CY)	Est. Weight Shell (Tons)
1-1	219	2.5	28.7	4.8	91.6	70.4
1-2	235	2.5	30.8	4.3	157.5	121.2
1-3	316	2.5	41.5	4.1	138.6	106.6
1-4	261	2.5	34.3	4.2	191.8	147.5
1-5	154	2.5	20.2	3.6	52.8	40.6
1-6	321	2.5	42.1	4.6	157.6	121.2
1-7	204	2.5	26.8	5.0	135.6	104.3
1-8	323	2.5	42.4	4.6	155.4	119.5
1-9	179	2.5	23.5	5.3	75.2	57.8
1-10	326	2.5	42.8	5.4	171.0	131.5
1-11	364	2.5	47.8	4.8	220.6	169.7
1-12	347	2.5	45.5	4.3	179.8	138.3
1-13	148	2.5	19.4	4.4	53.0	40.7
1-14	281	2.5	36.9	4.4	107.6	82.7
1-15	312	2.5	41.0	4.2	178.7	137.5
1-16	168	2.5	22.1	4.3	76.3	58.7
1-17	223	2.5	29.3	4.4	55.4	42.6
1-18	283	2.5	37.1	4.3	142.9	109.9
1-19	354	2.5	46.5	4.6	248.1	190.8
1-20	236	2.5	31.0	4.1	150.9	116.1
1-21				3.4	124.7	95.9
1-22				3.3	107.9	83.0
1-23				3.3	106.5	81.9
1-24				3.1	109.1	83.9
1-25				3.2	54.8	42.1
1-26				4.1	125.4	96.5
1-27				3.8	148.2	114.0
TOTALS			690		3,517	2,705

*NOTE: shell reef height is based on water depth at MHW (+0.3ft NAVD88) plus 0.5ft of settling