



FLOOR

**VOLUME 1.0™**

GLAZED PORCELAIN with STEPWISE™ TECHNOLOGY

 **daltile®**  
IMAGINE WHAT'S POSSIBLE™



Cover photo features Volume 1.0™ Degrees Silver 12 x 24 on the floor.  
Above photo features Volume 1.0™ Aural Sand 12 x 24 on the floor.

## Tune into Color, Size, and Slip Resistance

Commercial settings are sure to make ample use of versatile Volume 1.0™. This made in the USA product not only comes in a rich palette of hues but also offers our high-DCOF StepWise™ technology. With its soft cement look and handsome pressed edges, this adaptable glazed porcelain tile will help transform any environment.

- **A PERFECT CANVAS**
  - Versatile cement look with subtle visual movement provides a strong base for designs
  - A broad palette of 10 minimalistic, modern colors; mix and match for unique pattern designs
  - Coordinating Keystones™ mosaics available
- **BUILT TO PERFORM**
  - StepWise™ technology offers a high level of slip resistance, making it perfect for many commercial applications
  - Made in the USA

 **PRE-CONSUMER RECYCLED MATERIALS**

 **MADE IN THE U.S.A.**

 **REVEAL IMAGING®**

 **STEPWISE™**

All or select items within this series meet the requirements for these qualifications. For more information visit [daltile.com](http://daltile.com).

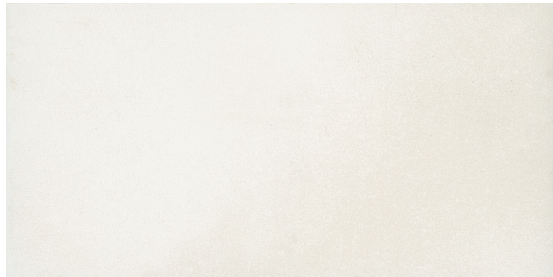
 **CERTIFIED PORCELAIN™ TILE**  
0.4% or less water absorption

### USAGE

Floors      Walls      Countertops

**F**      **W**      **C**

FLOOR TILE♦



SONIC WHITE VL75



AURAL SAND VL77



DEGREES SILVER VL71



ACOUSTIC TAN VL76



STEREO GREY VL73



REVERB ASH VL74



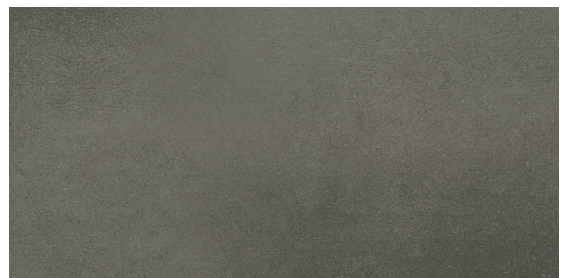
ELECTRIC MOSS VL79



ACCENT BROWN VL78



AMPLIFY BLACK VL70



INTENSITY PEBBLE VL72




NOTE: Please see Keystones™ series for coordinating mosaics. Visit [daltile.com/keystones](http://daltile.com/keystones).

♦ Additional colors available in the Volume 1.1™ series. For more information, visit [daltile.com/Volume11](http://daltile.com/Volume11).

# VOLUME 1.0™

GLAZED PORCELAIN with STEPWISE™ TECHNOLOGY

## SIZES

			Thickness	Sq. Ft./ Carton	Pieces/ Carton
	12 x 24 ♦ Floor Tile	(11-13/16" x 23-13/16") (30.00 cm x 60.48 cm)	5/16"	15.60	8
	12 x 12 ♦ Floor Tile	(11-13/16" x 11-13/16") (30.00 cm x 30.00 cm)	5/16"	14.55	15
	6 x 6 Floor Tile	(5-13/16" x 5-13/16") (14.70 cm x 14.70 cm)	5/16"	10.12	44

♦ Additional colors available in the Volume 1.1™ series. For more information, visit [daltile.com/Volume11](http://daltile.com/Volume11).

NOTE: Please see Keystones™ series for coordinating mosaics. Visit [daltile.com/keystones](http://daltile.com/keystones).

## APPLICATIONS

	Target DCOF wet	Suitable
Dry & Level – Interior Floor	N/A	✓
Wet & Level – Interior Floor	≥ 0.42	✓
Shower Floors (Residential or Light Commercial)	≥ 0.42	✓*
Exterior Floor Applications (including pool decking & other wet areas with minimal footwear)	≥ 0.60	✓
Ramps & Inclines	≥ 0.65	✓
Walls/Backsplashes	N/A	✓
Countertops	N/A	✓
Pool Linings	N/A	✓*

A DCOF value of ≥ 0.42 is the standard for tiles specified for level interior spaces expected to be walked upon when wet, as stated in ANSI A137.1-2012, Section 9.6. For more information about DCOF and the DCOF AcuTest™, visit [daltile.com/DCOF](http://daltile.com/DCOF).

### APPLICATION NOTES:

Suitable for exterior applications in freezing and non-freezing climates, when proper installation methods are followed.

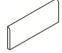
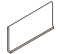

\* 6 x 6 floor tile only



## STEPWISE™

Patent-pending StepWise™ is a revolutionary technology that provides superior slip resistance on interior surfaces while being exceptionally easy to clean. StepWise™ allows tile to be safely used for a wider array of heavy commercial applications while remaining suitable for residential applications.


## TRIM

	Type	Number	Size	Pieces/ Carton
	Bullnose	P-43C9	3 x 12	30
	Cove Base	P-36C9TB	6 x 12	22
	Cove Base Outcorner	PC-36C9TB	1 x 6	15

Cove base trim is intended to coordinate with floor tile in the standard 90-degree installation position.

Cove base and cove corner trim are suitable for non-freezing climates only.

## INSTALLATION

Grout Joint Recommendation	Shade Variation
3/16" (Overlap should not exceed 33% when installing tile with a length 15" or greater in a staggered brick-joint pattern. When multiple sizes are installed in a modular pattern, please specify same size caliber at time of order.)	 Medium (V2)

## PERFORMANCE CHARACTERISTICS

	ASTM#	Result
Water Absorption	C373	< 0.5%
Breaking Strength	C648	> 275 lbs
Scratch Hardness	MOHS	8.0
Chemical Resistance	C650	Resistant
Abrasion Resistance	C1027	4

For additional information on test results, visit us at: [daltile.com/information/TestResults](http://daltile.com/information/TestResults).

## NOTES

Since there are variations in all fired ceramic and natural products, tile and trim supplied for your particular installation may not match samples. Final confirmation should be made from actual tiles and trim prior to installation. Manufactured in accordance with ANSI A137.1 standards.

Water, oil, grease, improper drainage and certain footwear can create slippery conditions. Floor applications expected to be exposed to these conditions require extra caution in product selection.

For additional information refer to "Factors to Consider" at: [daltile.com/Factors](http://daltile.com/Factors).

Special consideration needs to be given when installing tiles greater than 15 inches. Please refer to [daltile.com/LargeTiles](http://daltile.com/LargeTiles) for more information.

Use of a latex modified thin-set is recommended for installation. For more information, visit [daltile.com](http://daltile.com).



DESIGNED TO HELP EARN LEED™ CREDITS. For more detailed information, visit [daltilegreenworks.com](http://daltilegreenworks.com).

7834 C. F. Hawn Freeway,  
Dallas, Texas 75217 | 1.800.933.TILE

To view the complete collection of Daltile® products and information, visit our website at [daltile.com](http://daltile.com).



IMAGINE WHAT'S POSSIBLE™

©2018 Daltile (10/18)