

IRRIGATION PLANS

THE CITY OF NAPLES
for

CHARLIE C. ANTHONY PARK

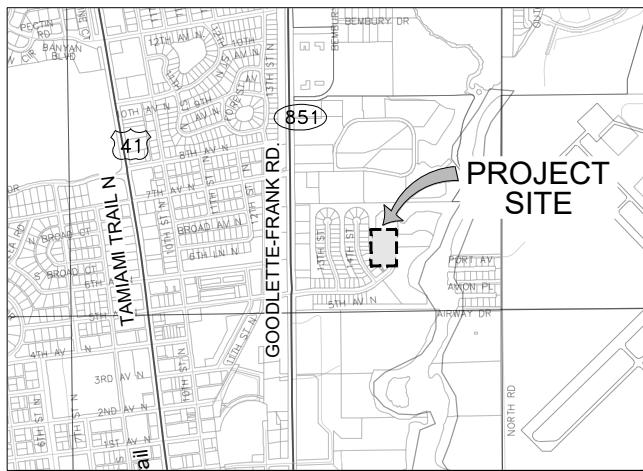
Irrigation Design By:
RAM Design Group LLC
Irrigation Consultants
Ft Myers, FL 33697
239-287-2559

CONTACTS:

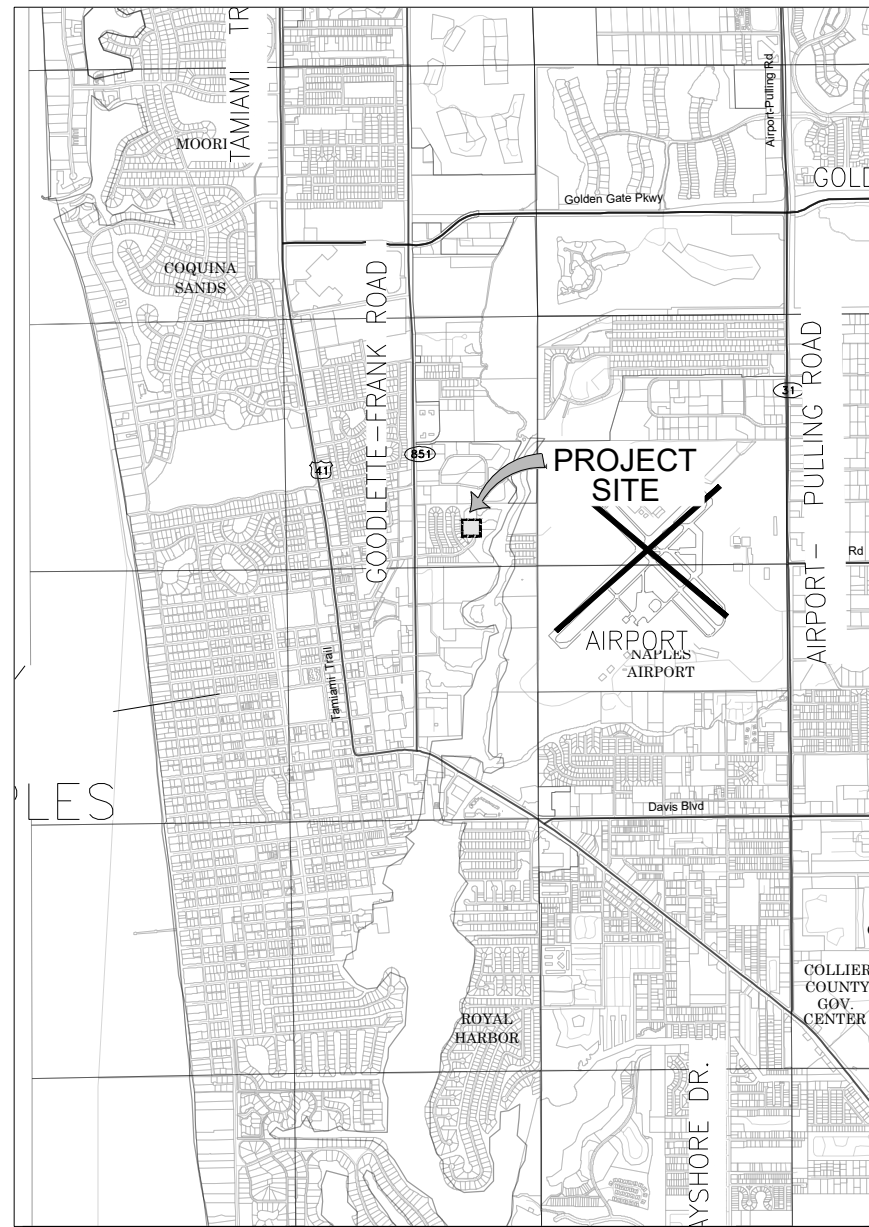
CITY OF NAPLES :
JIM HODGDON
PARKS AND PARKWAYS SUPERINTENDENT
jhodgdon@naplesgov.com
239-213-7134

LANDSCAPE ARCHITECT:
RICHARD P. CHALUPA
Q. GRADY MINOR & ASSOCIATES, P.A.
rchalupa@gradymenor.com
239-947-1144

IRRIGATION DESIGNER:
RICK MANLEY
RAM DESIGN
ramdesign63@gmail.com
239-287-2559



VACINITY MAP
SCALE: Custom



LOCATION MAP
SCALE: Custom

IRRIGATION PLANS	
TABLE OF CONTENTS	
Dwg. No.	Description
1	COVER SHEET
2	IRRIGATION PLAN (1)
3	IRRIGATION PLAN (2)
4	IRRIGATION DETAILS



INVESTIGATE
BEFORE YOU
EXCAVATE



"CALL SUNSHINE"
1-800-432-4770

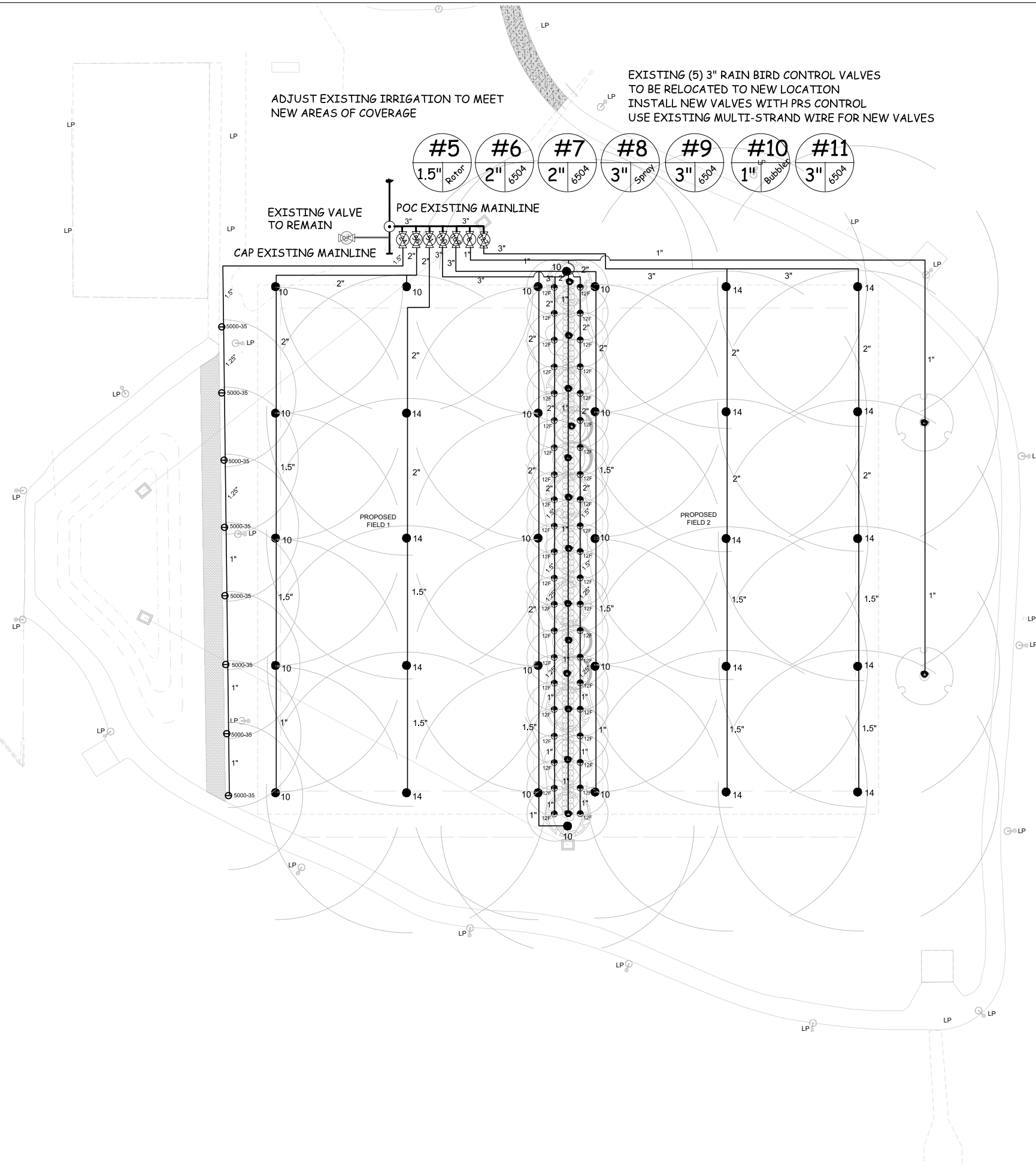
TOLL FREE

FL STATUTE 563.851 (1979) REQUIRES
MIN. OF 2 DAYS AND MAX. OF 5 DAYS
NOTICE BEFORE YOU EXCAVATE.

CHARLIE C. ANTHONY PARK
COVER SHEET
CITY OF NAPLES, FLORIDA

REVISIONS

SHEET
1 OF 4

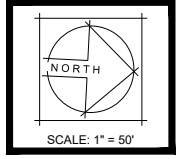


ADJUST EXISTING IRRIGATION TO MEET NEW AREAS OF COVERAGE

EXISTING (5) 3" RAIN BIRD CONTROL VALVES TO BE RELOCATED TO NEW LOCATION
 INSTALL NEW VALVES WITH PRS CONTROL
 USE EXISTING MULTI-STRAND WIRE FOR NEW VALVES

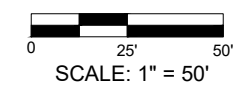
- #5
1.5" Rotator
- #6
2" 650A
- #7
2" 650A
- #8
3" Spray
- #9
3" 650A
- #10
1" Bubble
- #11
3" 650A

Irrigation Design By:
 RAM Design Group LLC
 Irrigation Consultants
 Ft Myers, FL 33697
 239-287-2559



CHARLIE C. ANTHONY PARK
 IRRIGATION PLAN (2)
 CITY OF NAPLES, FL

REVISIONS



IRRIGATION LEGEND

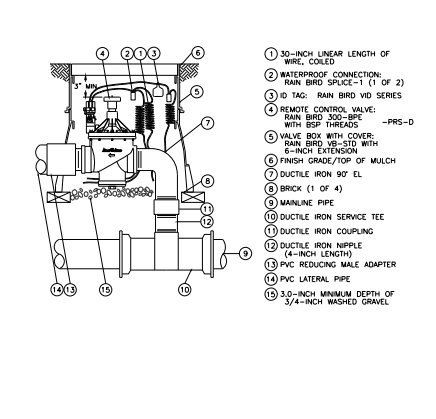
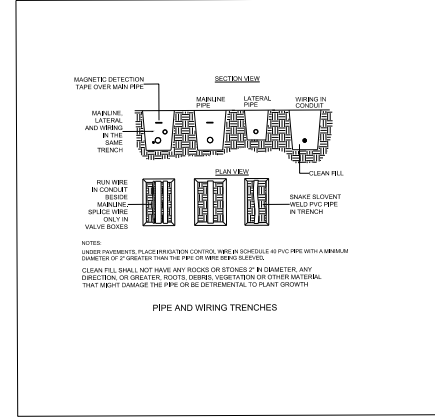
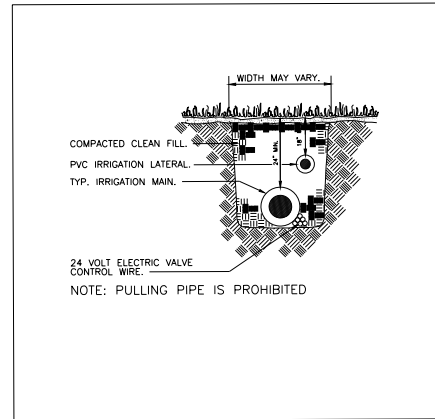
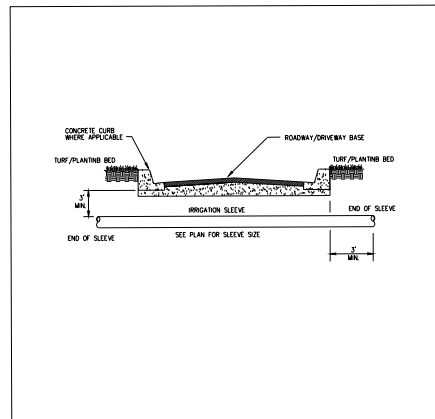
SYMBOL	MANUFACTURER/MODEL
	PVC CL200 SW MAINLINE PURPLE (SCH40 FITTINGS) (size indicated on plan)
	PVC CL200 SW LATERAL PIPING PURPLE (SCH40 FITTINGS) (size indicated on plan)
	SCH40 PVC SLEEVES (size indicated on plan)
	EXISTING RAIN BIRD MODULE SMART CONTROLLER
	RAIN BIRD PESB-R-PRS-D CONTROL VALVE 1"-2" RAIN BIRD 300-BPES-PRS-D CONTROL VALVE 3" VALVE (GPM) INDICATED IN VALVE SYMBOL
	RAIN BIRD FALCON 6504 NP #14 NOZZLE @ 50PSI 12.7GPM INSTALLED ON 1" SWING JOINT
	RAIN BIRD FALCON 6504 NP #10 NOZZLE @ 50PSI 9.1GPM INSTALLED ON 1" SWING JOINT
	RAIN BIRD 5004-R-MPR-35 (Beige nozzle)
	RAIN BIRD 1402 SERIES PRESSURE COMPENSATING BUBBLER
	RAIN BIRD 1806-PRS 6' POP UP SPRAY W/NP COVER (nozzle indicated on plan)

SITE IRRIGATION NOTES

- THE CONTRACTOR'S ATTENTION IS CALLED TO THE FACT THAT THERE ARE OTHER ACTIVE UTILITIES AND SERVICES IN AND AROUND THE SITE. CONTRACTOR IS RESPONSIBLE FOR LOCATING THESE TO AVOID DAMAGE TO THEM.
- THE CONTRACTOR SHALL MAKE ANY NECESSARY ADJUSTMENTS IN THE PROPOSED IRRIGATION SYSTEM TO AVOID DAMAGE TO EXISTING STRUCTURES, PAVING AND UTILITIES.
- THE CONTRACTOR SHALL BE RESPONSIBLE FOR CONFORMING TO ALL CODES AND ORDINANCES RELEVANT TO THE WORK UNDER THIS CONTRACT.
- ALL WORK, ADJUSTMENTS, AND INSPECTIONS SHALL BE SUBJECT TO THE APPROVAL OF THE LANDSCAPE ARCHITECT.
- THE CONTRACTOR SHALL BE RESPONSIBLE FOR ANY DAMAGE TO ON-SITE UTILITIES, STRUCTURES, OR PAVING RESULTING FROM IRRIGATION CONSTRUCTION.
- THE CONTRACTOR SHALL BE RESPONSIBLE FOR ALL MATERIALS AND LABOR TO FULLY EXECUTE AND GUARANTEE AS REQUIRED. THE TOTAL WORK SHOWN ON THIS PLAN IN ACCORDANCE WITH SPECIFICATIONS, AND ALSO AS PER INSTRUCTIONS OF THE LANDSCAPE ARCHITECT AND THE OWNER.
- THE CONTRACTOR SHALL VERIFY ALL QUANTITIES TO ASSURE ADEQUATE INSTALLATION OF THE SYSTEM.
- THE LOCATION OF THE AUTOMATIC CONTROL CLOCK IS GENERALLY INDICATED ON THE DRAWING AND WILL BE SPECIFICALLY LOCATED ON-SITE BY THE OWNER.
- LINE LOCATIONS AS INDICATED ON THE PLAN ARE SCHEMATIC. THE CONTRACTOR SHALL LOCATE ALL LINES IN SUCH A WAY AS TO CAUSE THE LEAST CONFLICT WITH THE LOCATION OF PROPOSED PLANT MATERIAL (AS SHOWN ON THE LANDSCAPE DEVELOPMENT PLAN) AND OTHER SITE AMENITIES.
- ALL MAIN LINES SHALL BE INSTALLED A MAXIMUM OF 2' FROM THE BACK OF CURB WHERE POSSIBLE. LATERAL LINES SHALL BE INSTALLED LIKEWISE WHERE POSSIBLE.
- THE CONTRACTOR SHALL ADJUST THE RADIUS AND ARC OF EACH HEAD TO MINIMIZE "OVERTHROW" AND TO ELIMINATE DRY SPOTS.
- THE CONTRACTOR SHALL BE RESPONSIBLE FOR THE SUPPLY AND INSTALLATION OF ADDITIONAL HEADS TO COVER "DRY SPOTS" OR SLIGHT VARIATIONS FROM THE PLAN TO THE SITE. THE LOCATION AND ARRANGEMENT OF THESE HEADS SHALL BE SUBJECT TO THE APPROVAL OF THE LANDSCAPE ARCHITECT.
- THE ELECTRIC SUPPLY WILL BE STUBBED OUT AT THE CONTROL CLOCK LOCATION BY OTHERS. THE IRRIGATION CONTRACTOR SHALL BE RESPONSIBLE FOR ALL ELECTRICAL CONNECTIONS FROM CONTROL VALVES TO THE CONTROL CLOCK.
- THE ENTIRE SYSTEM SHALL BE UNCONDITIONALLY GUARANTEED BY THE IRRIGATION CONTRACTOR AGAINST ALL DEFECTIVE WORK AND MATERIALS FOR A PERIOD OF ONE YEAR FOLLOWING THE DATE OF FINAL ACCEPTANCE.
- THE CONTRACTOR SHALL BE RESPONSIBLE AT TIME OF COMPLETION OF PROVIDING "AS BUILT" DRAWINGS, TO INCLUDE LOCATIONS OF ALL VALVES (AUTOMATIC AND MANUAL) WITH TRIANGULATED MEASUREMENTS TO EACH. INCLUDE LOCATIONS OF ALL VALVES (AUTOMATIC AND MANUAL) WITH TRIANGULATED MEASUREMENTS TO EACH, AS WELL AS ANY DEVIATIONS IN LOCATION OF PIPING AND HEADS REPRESENTED AS REPRESENTED BY THE CONTRACT DOCUMENTS.

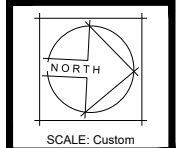
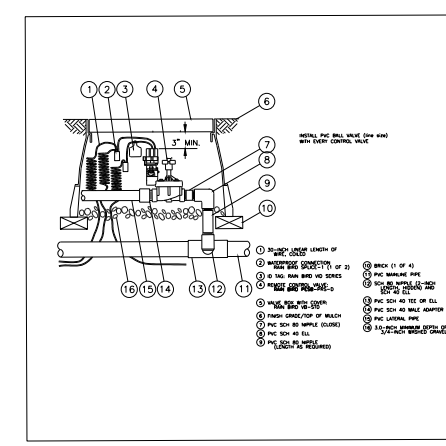
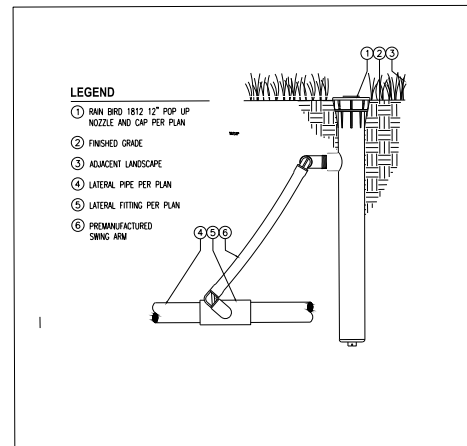
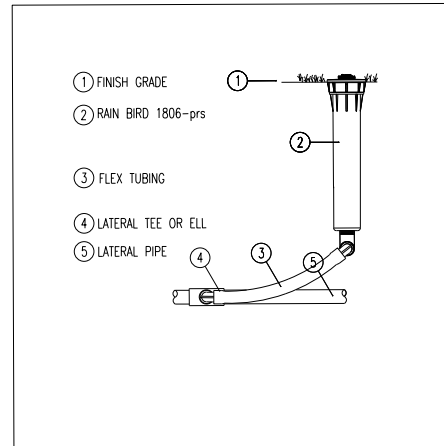
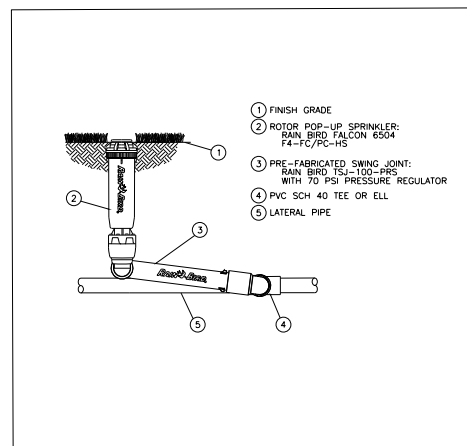
GENERAL NOTES

- PIPING AND SOME ELEMENTS ARE SHOWN IN PAVED OR OTHER NON-LANDSCAPE DESIGNATED AREAS FOR GRAPHIC CLARITY ONLY. ACTUAL LOCATION SHALL BE WITHIN THE PROJECT'S LANDSCAPE DESIGNATED AREA.
- IRRIGATION CONTRACTOR SHALL FIELD DETERMINE THE FINAL LOCATIONS FOR IRRIGATION CONTROLLERS.
- RAIN SENSORS SHALL BE LOCATED IN OPEN AREAS FREE OF VEGETATIVE OR STRUCTURAL OBSTRUCTION, CLEAR OF IRRIGATION COVERAGE.
- GENERAL CONTRACTOR SHALL PROVIDE DEDICATED 120 VOLT POWER IN CONDUIT TO CONTROLLERS.
- IRRIGATION AS-BUILT DRAWINGS SHALL BE KEPT AT ALL TIMES AND SHALL BE MADE AVAILABLE FOR REVIEW ON DEMAND.
- IRRIGATION CONTRACTOR SHALL BE RESPONSIBLE FOR ACQUIRING ALL NECESSARY PERMITS TO INSTALL SYSTEM DEFINED BY THESE DOCUMENTS. SAID PERMITS TO INCLUDE ALL WELL AND WATER USE PERMITS BY ALL LOCAL JURISDICTIONS.
- CONTRACTOR SHALL PROVIDE ALL LABOR, MATERIALS, SERVICES, SPECIFIED PRODUCTS, AND EQUIPMENT NECESSARY FOR THE COMPLETE INSTALLATION OF DEPICTED IRRIGATION SYSTEM.
- THE CONTRACTOR SHALL BE RESPONSIBLE FOR PROVIDING 100% COVERAGE TO ALL PLANT MATERIAL SHOWN AND IDENTIFIED, INCLUDING ALL TURF AREAS.
- CONTRACTOR CONCEDES TO THE OWNER THAT TIME IS OF THE ESSENCE AND THAT ANY DAMAGES OCCASIONED BY THE CONTRACTOR'S FAILURE TO COMPLETE THE WORK BY THE DATES ESTABLISHED IN THE CONTRACT, WHERE APPLICABLE, SHALL BE REIMBURSABLE TO THE OWNER.



SLEEVING NOTES

- A - (1) 2" SCH40 SLEEVE
- B - (1) 3" SCH40 SLEEVE
- C - (2) 2" SCH40 SLEEVE
- D - (1) 3" SCH40 SLEEVE
(1) 2" SCH40 SLEEVE



CHARLIE C. ANTHONY PARK
IRRIGATION DETAILS
CITY OF NAPLES, FL

REVISIONS

GLANDSCAPE/C/0414 - ANTHONY PARK/01-DWG/SUB/TERMINATION/14 - LA BTR/HR/DWG 5/11/2021 11:47 AM