

DRAIN SCHEDULE				
MARK	DESCRIPTION	MANUFACTURER	MODEL	SPECIFICATION
PD-4	DECK DRAIN	WATTS	FD-400-F-4	CAST IN PLACE PARKING DECK DRAIN WITH 17"X17" (432X432) SQUARE ANTI-PONDING TOP WITH MEMBRANE CLAMPING FLANGE, HEAVY DUTY SELF-CLOSING HINGED GRATE, ALUMINUM SEDIMENT BUCKET, AND NO HUB OUTLET.
RD-1	ROOF DRAIN (PRIMARY)	WATTS	RD-300-K40	15" DIAMETER, DURA COATED CAST IRON BODY WITH FLASHING CLAMP, SUMP RECEIVER AND UNDER DECK CLAMP. DRAIN SHALL HAVE COMBINATION MEMBRANE GRAVEL STOP AND GALVANIZED CAST IRON DOME.
TD-2	TRENCH DRAIN (SLAB-ON-GRADE)	ZURN	Z882-HDS	12" WIDE TOP MODULAR TRENCH DRAIN, MODULAR CHANNEL. SECTIONS MADE OF 3% WATER ABSORBENT HIGH DENSITY POLYETHYLENE (HDPE), LOCKED INTO SURROUNDING CONCRETE EVERY 12". 12" WIDE REVEAL. STAINLESS STEEL REINFORCED SLOTTED GRATE CONFORMING TO ASTM SPECIFICATION A361, GRADE CF8 (TYPE 304).

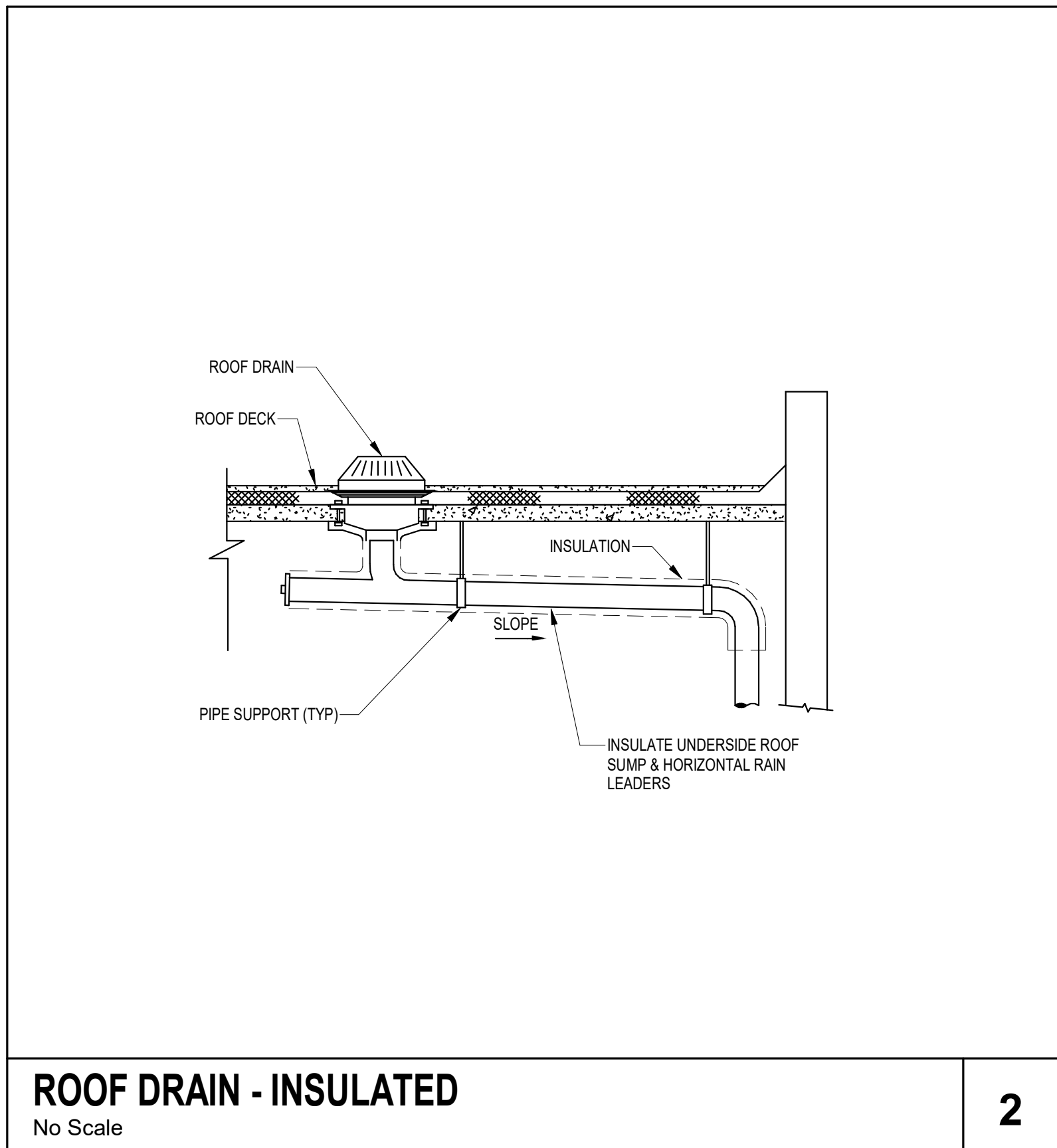
PLUMBING SYMBOLS	
SYMBOL	DESCRIPTION
CD	- CONDENSATE DRAIN PIPING
CW	- DOMESTIC COLD WATER PIPING
HW	- DOMESTIC HOT WATER PIPING
HWR	- DOMESTIC HOT WATER RETURN PIPING
S	- SANITARY WASTE PIPING
V	- VENT PIPING
ST	- STORM DRAIN PIPING
STO	- OVERFLOW STORM DRAIN PIPING
G	- FUEL GAS PIPING
+	- HOSE BIBB OR WALL HYDRANT
∅	- CLEANOUT PLUG
∅	- WALL CLEANOUT
∅	- FLOOR CLEANOUT / EXTERIOR CLEANOUT
FD	- FLOOR DRAIN
FS	- FLOOR SINK
DD	- DECK DRAIN
— —	- SHUT-OFF VALVE
— —	- BALL VALVE
— —	- CALIBRATED BALANCING VALVE
— —	- CHECK VALVE (SWING)
— —	- PRESSURE REDUCING VALVE
— —	- SOLENOID OPERATING VALVE
— —	- GAS COCK
— —	- GAS PRESSURE REGULATOR
4	- DETAIL REFERENCE
— —	- PIPE TAG
⚠	- REVISION REFERENCE

PLUMBING ABBREVIATIONS	
ABBREVIATION	DESCRIPTION
CA	- COMPRESSED AIR
AFF	- ABOVE FINISH FLOOR
AW	- ACID WASTE
AV	- ACID VENT
CB	- CATCH BASIN
CD	- CONDENSATE DRAIN
CFH	- CUBIC FEET PER HOUR
CO	- CLEANOUT
CONT	- CONTINUATION
CW	- DOMESTIC COLD WATER
DI	- DEIONIZED WATER
DN	- DOWN
DS	- DOWNSPOUT
DWG	- DRAWING
EXIST	- EXISTING
°F	- DEGREE FAHRENHEIT
FCO	- FLOOR CLEANOUT
FD	- FLOOR DRAIN
FOF	- FUEL OIL FILL
FOG	- FUEL OIL GAGE
FOR	- FUEL OIL RETURN
FOS	- FUEL OIL SUPPLY
FOV	- FUEL OIL VENT
FS	- FLOOR SINK
FSE#	- FOODSERVICE EQUIPMENT NUMBER
G	- GAS
GPH	- GALLONS PER HOUR
GPM	- GALLONS PER MINUTE
GR	- KITCHEN WASTE (GREASE)
HB	- HOSE BIBB
HD	- HUB DRAIN
HW	- DOMESTIC HOT WATER
HWR	- DOMESTIC HOT WATER RECIRCULATING
IE	- INVERT ELEVATION
IW	- INDIRECT WASTE
KW	- KILOWATT
LBS	- POUNDS
MH	- MANHOLE
NC	- NORMALLY CLOSED
NIC	- NOT IN CONTRACT
NO	- NORMALLY OPEN
NP	- NON-POTABLE WATER
NTS	- NOT TO SCALE
OD	- OUTSIDE DIAMETER
PRV	- PRESSURE REDUCING VALVE
PSI	- POUNDS PER SQUARE INCH
PVC	- POLYVINYL CHLORIDE PIPE
RD	- ROOF DRAIN
RBP	- REDUCED PRESSURE BACKFLOW PREVENTOR
SAN	- SANITARY
SD	- STORM DRAIN
SF	- SQUARE FEET
SH	- SHEET
ST	- STORM
STO	- OVERFLOW STORM DRAIN
SW	- SOFT COLD WATER
V	- VENT
VAC	- VACUUM
VC	- VACUUM CLEANING
VTR	- VENT THRU ROOF
WOO	- WALL CLEANOUT
WTR	- WATER

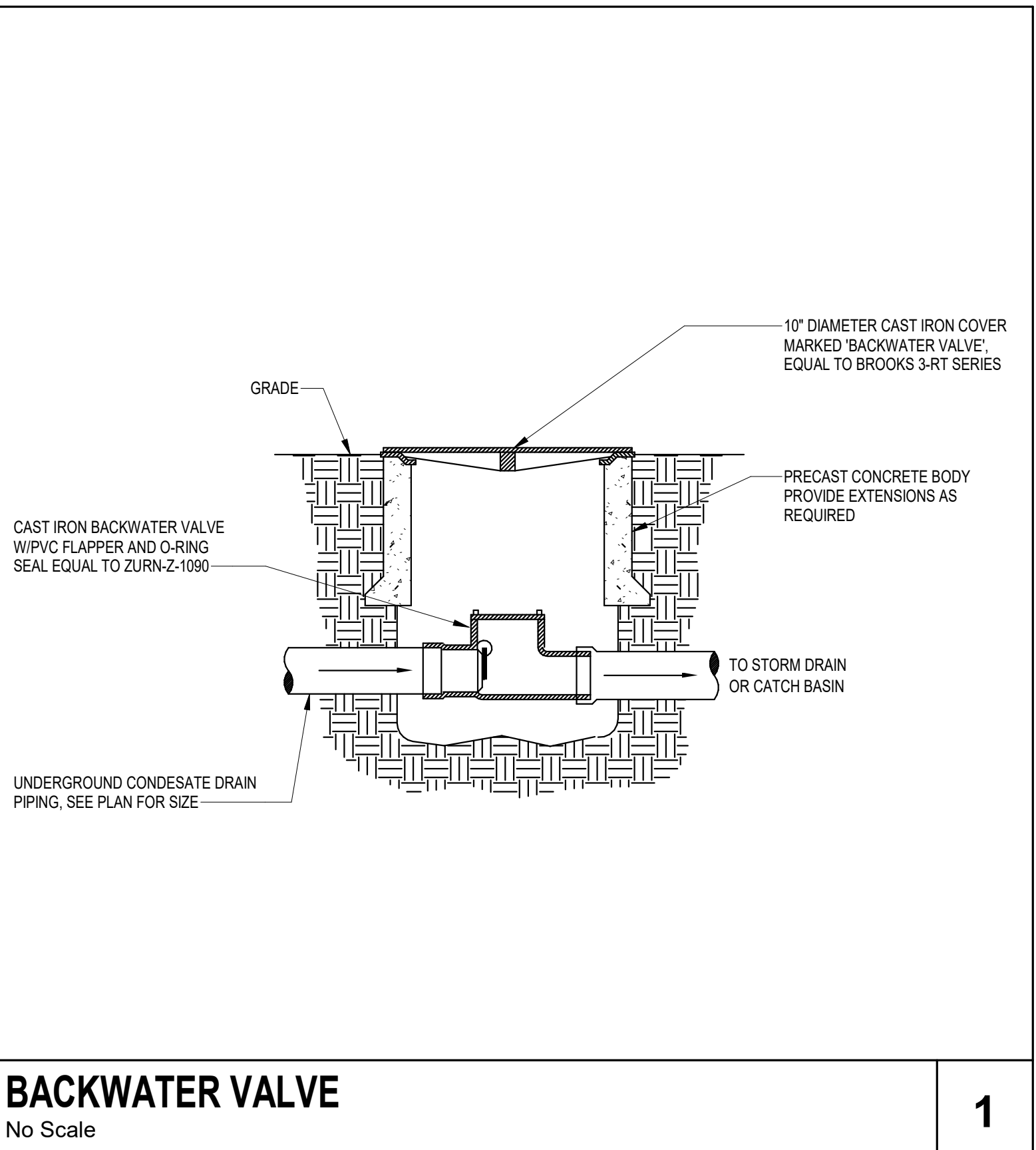
NOTE: SOME SYMBOLS SHOWN ON THIS LEGEND MAY NOT PERTAIN TO THIS PROJECT

PLUMBING GENERAL NOTES	
1.	REFERENCE THE SPECIFICATIONS FOR MATERIAL AND EQUIPMENT INSTALLATION STANDARDS.
2.	THE PLUMBING INSTALLATION SHALL COMPLY WITH ALL STATE AND LOCAL CODES.
3.	UTILITIES AND SERVICES INDICATED ARE TAKEN FROM VARIOUS OLD AND NEW SURVEYS, AS-BUILT RECORDS AND FIELD INVESTIGATIONS. UNFOUNDED CONDITIONS PROBABLY EXIST AND NEW WORK MAY NOT BE FIELD LOCATED EXACTLY AS SHOWN ON DRAWINGS. COOPERATION WITH OTHER TRADES IN ROUTING AND BURIAL DEPTHS, AS DETERMINED DURING CONSTRUCTION, WILL BE NECESSARY.
4.	FIELD VERIFY EXISTING INSTALLATIONS. MODIFY EXISTING PLUMBING SYSTEMS, WHICH ARE TO REMAIN ACTIVE, TO FACILITATE RECONNECTION AND EXTENSION OF THE NEW WORK.
5.	NOTIFY OWNER AT LEAST 24 HOURS PRIOR TO INTERRUPTING EXISTING SERVICE. SCHEDULE DISCONNECTION AND TIE-INS TO MINIMIZE DISRUPTION OF SERVICES. SERVICES ARE NOT TO BE LEFT DISRUPTED DURING NON-NORMAL CONTRACTOR WORKING HOURS.
6.	PLANS ARE NOT COMPLETELY TO SCALE. PIPE ROUTING SHOWN IS SCHEMATIC AND IS NOT INTENDED TO INDICATE EXACT ROUTING. CONTRACTOR SHALL PROVIDE ANY ADDITIONAL OFFSETS AND FITTINGS REQUIRED FOR PROPER INSTALLATION AND TO MAINTAIN CLEARANCES. VERIFY STRUCTURAL, MECHANICAL AND ELECTRICAL INSTALLATIONS AND OTHER POTENTIAL OBSTRUCTIONS AND ROUTE PIPING TO AVOID INTERFERENCES.
7.	PROVIDE ALL OFFSETS AND FITTINGS AND MAKE CONNECTION TO SITE UTILITIES.
8.	CONCEAL PIPING ABOVE CEILINGS, WITHIN WALLS OR CHASES EXCEPT IN MECHANICAL ROOMS OR AS SPECIFICALLY NOTED.
9.	PROVIDE ACCESS PANELS FOR ALL VALVES CONCEALED IN WALLS OR ABOVE NON-ACCESSIBLE CEILINGS.
10.	SLEEVE AND/OR FIRESTOP ALL PENETRATIONS THROUGH RATED WALLS, CEILINGS, AND FLOORS WITH UL LISTED ASSEMBLIES. FIRESTOP ASSEMBLIES SHALL BE EQUAL TO OR EXCEED THE RATING OF THE WALL, CEILING OR FLOOR. SEE ARCHITECTURAL DRAWINGS FOR FINAL FINISHES.
11.	FLASH AND COUNTER-FLASH ROOF PENETRATIONS.
12.	WHEN BEAM SLEEVE PENETRATIONS ARE NECESSARY, COORDINATE PENETRATIONS WITH ALL TRADES, THE ARCHITECT AND THE STRUCTURAL ENGINEER.
13.	PROVIDE FOUNDATION PAD PENETRATION SLEEVES. ALLOW 1" MINIMUM CLEARANCE BETWEEN SLEEVE INSIDE SURFACE AND PIPE EXTERIOR.
14.	SEE ARCHITECTURAL DRAWINGS FOR FIXTURE LOCATIONS AND MOUNTING HEIGHTS.
15.	PROVIDE AUTOMATIC TRAP PRIMERS FOR FLOOR DRAIN TRAP SEALS.
16.	PROVIDE AN AIR GAP, WHEN REQUIRED BY CODE, SERVING INDIVIDUAL FIXTURES, DEVICES, APPLIANCES AND APPARATUS.
17.	ALL EXPOSED PIPE AND FITTINGS IN FINISHED AREAS SHALL BE CHROME PLATED.
18.	MOUNT HOSE BIBBS 24" ABOVE FINISHED GRADE.
19.	PROVIDE CLEANOUTS IN ACCORDANCE WITH ALL STATE AND LOCAL CODES. INSTALL CLEANOUT WITH COVER FLUSH TO FINISH SURFACE.
20.	COORDINATE EXACT FLOOR DRAIN LOCATIONS WITH ARCHITECTURAL DRAWINGS. SET FLOOR DRAINS BELOW FINISHED FLOOR TO ALLOW FOR FLOOR SLOPING TO THE DRAIN.
21.	COORDINATE PIPING WITH ALL ELECTRICAL EQUIPMENT (PANELS, TRANSFORMERS, ETC.) PRIOR TO ANY INSTALLATION. DO NOT ROUTE ANY PIPING OVER ANY ELECTRICAL PANELS UNDER ANY CIRCUMSTANCES. ANY PIPING RUN OVER PANELS SHALL BE RE-ROUTED AT NO ADDITIONAL COST.
22.	ALL WALL MOUNTED LAVATORIES SHALL BE ATTACHED TO FLOOR MOUNTED CARRIER DESIGNED TO WITHSTAND A VERTICAL LOAD OF 250 POUNDS ON THE FRONT OF THE FIXTURE.
23.	PROVIDE SANITARY WASTE, VENT, DOMESTIC WATER, ETC. ROUGH-IN AND MAKE FINAL CONNECTIONS (TO INCLUDE PROVIDING ALL NECESSARY RELATED STOPS, VALVES, TRAPS, ETC. AND MAKE READY FOR USE) TO ALL EQUIPMENT, WHETHER FURNISHED BY THIS CONTRACTOR OR FURNISHED BY OTHERS.
24.	ALL MATERIALS AND EQUIPMENT INSTALLED IN RETURN AIR PLENUMS SHALL BE NON-COMBUSTIBLE AND UL APPROVED FOR USE IN A RETURN AIR PLENUM SPACE. IF MATERIALS ARE NOT NON-COMBUSTIBLE IN RETURN AIR PLENUMS, THEY SHALL BE REPLACED OR WRAPPED WITH A UL LISTED FIRE RATED FIRE WRAP (I.E. FIBREWRAP 0.5 PLENUM INSULATION OR APPROVED EQUAL) AND INSTALLED IN ACCORDANCE WITH THE MANUFACTURER'S UL LISTED DETAILS AND RECOMMENDATIONS AT NO ADDITIONAL COST. (NOTE: REFER TO MECHANICAL DRAWINGS FOR RETURN AIR PLENUM LOCATIONS.)
25.	PIPING, INSULATION, FITTINGS, MATERIALS, COVERS AND FINISHES IN RETURN AIR PLENUM SHALL HAVE A MAXIMUM FLAME SPREAD RATING OF 25 AND A MAXIMUM SMOKE DEVELOPED RATING OF 50.

PLUMBING DRAWING INDEX	
SHEET	DESCRIPTION
PD.01	PLUMBING SYMBOLS, LEGEND, NOTES AND INDEX
P1.00	PLUMBING SITE PLAN
P1.01	PLUMBING UNDERGROUND PLAN
P1.02	PLUMBING FLOOR PLAN - GROUND LEVEL
P1.03	PLUMBING FLOOR PLAN - SECOND LEVEL
P1.04	PLUMBING FLOOR PLAN - THIRD LEVEL
P1.05	PLUMBING FLOOR PLAN - ROOF
P6.0	STORM RISER



ROOF DRAIN - INSULATED
No Scale



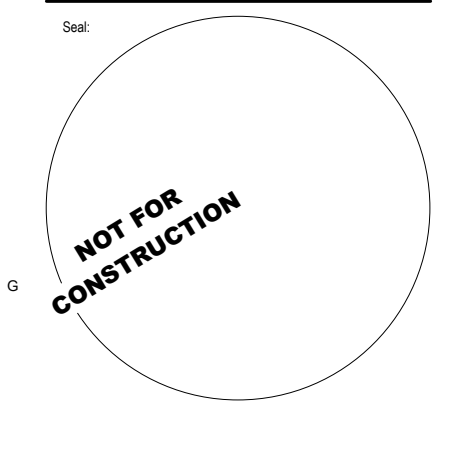
BACKWATER VALVE
No Scale



130 Jackson Street, Suite 200
Naples, Florida 34102
Phone: 239.293.9838 Fax: 239.275.6586

Project:
1st Avenue S. Public Parking Garage
Owner:
City of Naples

Consultant:
Architect:
Structural Engineer:
Mechanical Engineer:
Electrical Engineer:
Civil Engineer:



Project Phase:
Schematic Design
Project #: 2204.01
Project Issue: June/2022
Sheet Issue: 12/16/22

No.	Date	Revision

Copyright © 2022, BSSW Architects, Inc. All rights reserved. No part of this document may be reproduced, stored in a retrieval system, or transmitted, in any form or by any means, electronic, mechanical, photocopying, recording, or by any information storage and retrieval system, without the prior written permission of BSSW Architects, Inc.

Sheet Title:
PLUMBING SYMBOLS, LEGEND, NOTES AND INDEX
P0.01



132 Jackson Street, Suite 200
Fort Myers, Florida 33901
Phone: 239-253-3551 Fax: 239-275-9396

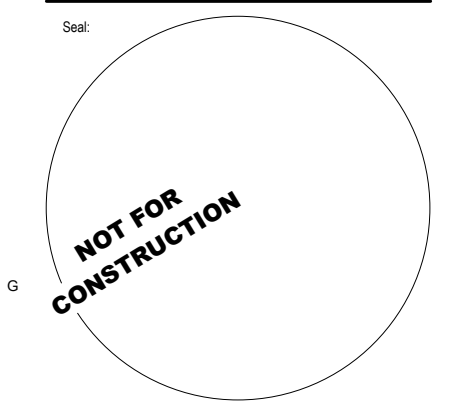
581 Central Ave.
Naples, Florida 34110
Phone: 239-452-3101 Fax: 239-462-4152

**1st Avenue S.
Public Parking
Garage**

Owner:
City of Naples

Consultant:

Designer:



Project Phase:
Schematic Design

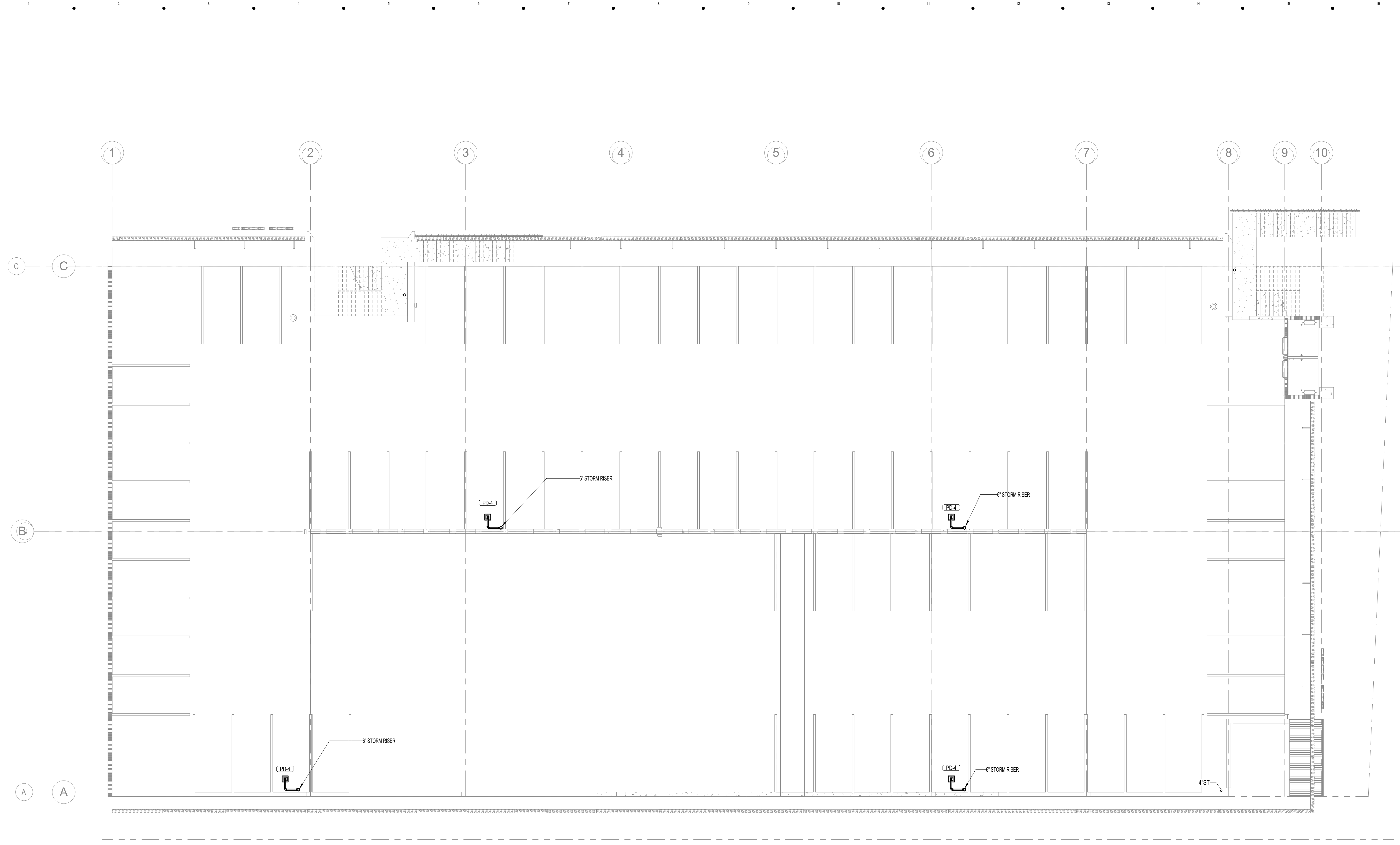
Project #: 2204_01
Project Issue: June/2022
Sheet Issue: 12/18/22

No.	Date	Revision

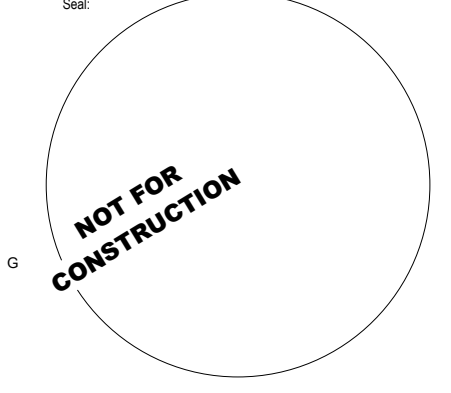
Copyright © 2022, BSSW Architects, Inc. All rights reserved. No part of this document may be reproduced, stored in a retrieval system, or transmitted in any form or by any means, electronic, mechanical, or otherwise, without the prior written permission of BSSW Architects, Inc.

Sheet Title:
**PLUMBING
FLOOR PLAN -
SECOND LEVEL**

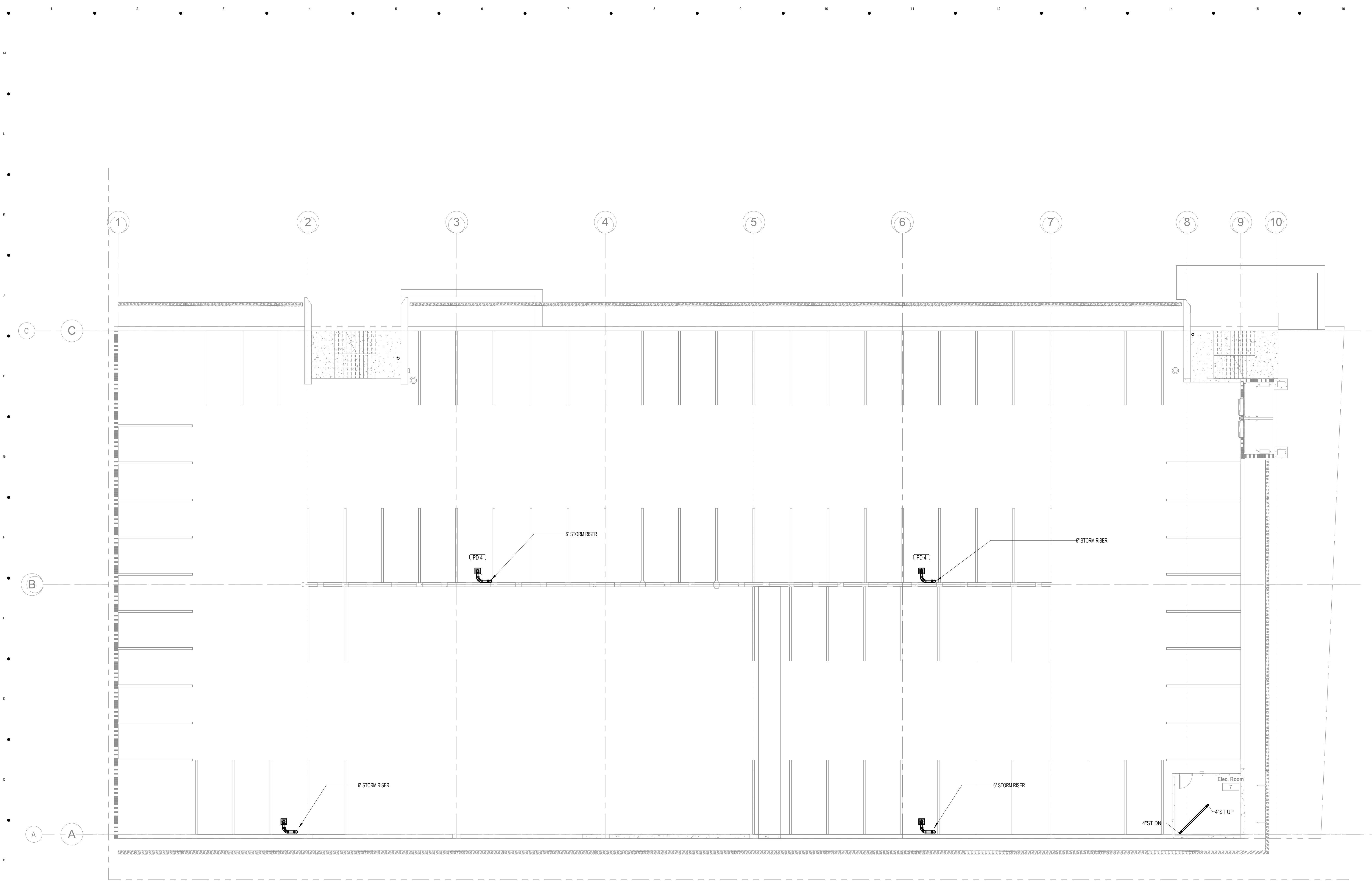
Sheet No.:
P1.03



1 SECOND LEVEL - PLUMBING
3/32" = 1'-0"



No.	Date	Revision



1 THIRD LEVEL - PLUMBING
3/32" = 1'-0"

Project:

1st Avenue S.
Public Parking
Garage

Owner:
City of Naples

Consultant:

Sheet:

**NOT FOR
CONSTRUCTION**

Project Phase:
Schematic Design

Project #: 2204 01
Project Issue Date: June 2022
Sheet Issue Date: 12/16/22

No. Date Revision

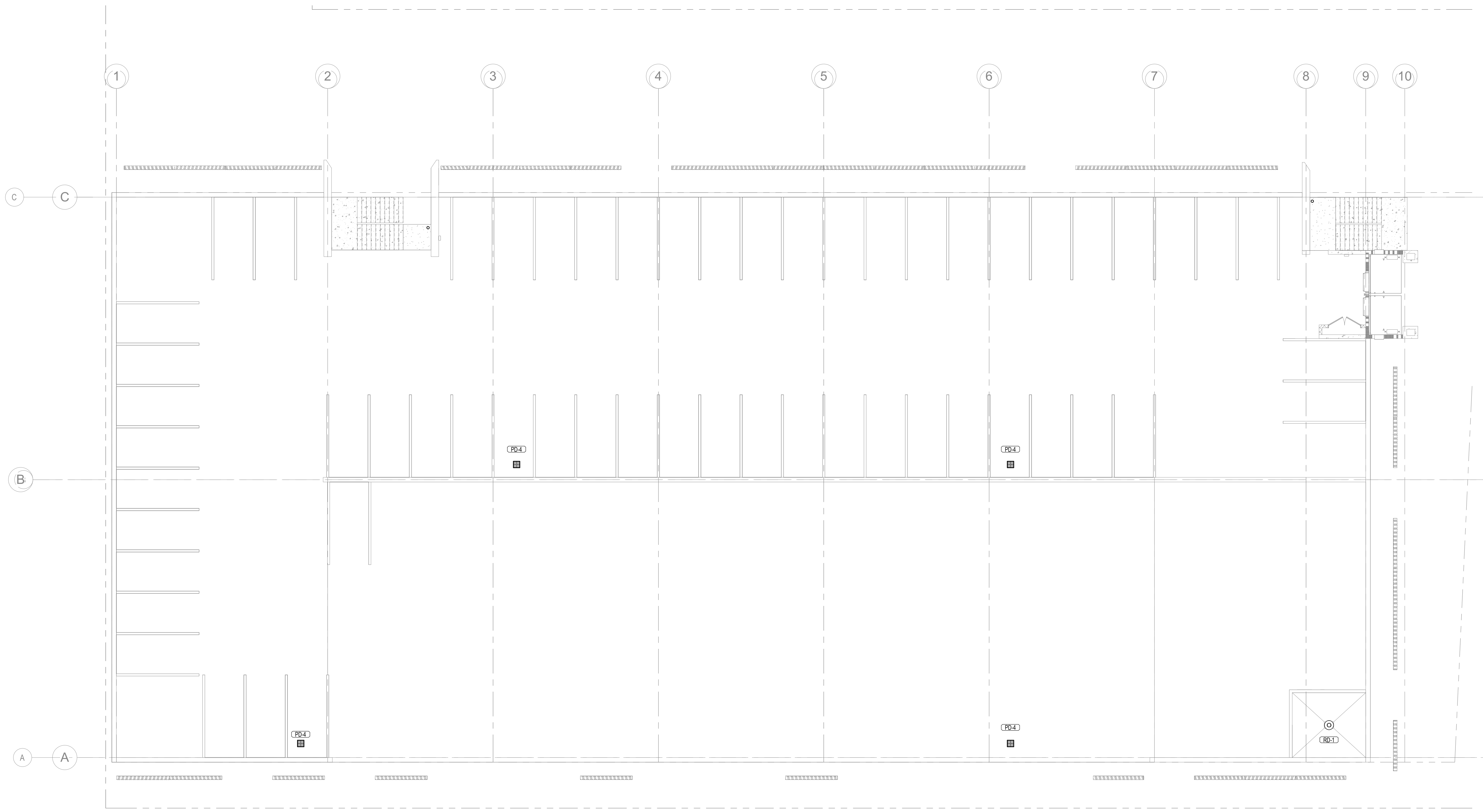
No.	Date	Revision

Copyright © 2022 BSSW Architects, Inc. All rights reserved. No part of this document may be reproduced, stored in a retrieval system, or transmitted, in any form or by any means, electronic, mechanical, photocopying, recording, or by any information storage and retrieval system, without the prior written permission of BSSW Architects, Inc.

Sheet Title:
PLUMBING
FLOOR PLAN -
ROOF

Sheet No.:

P1.05



1 ROOF LEVEL - PLUMBING
3/32" = 1'-0"



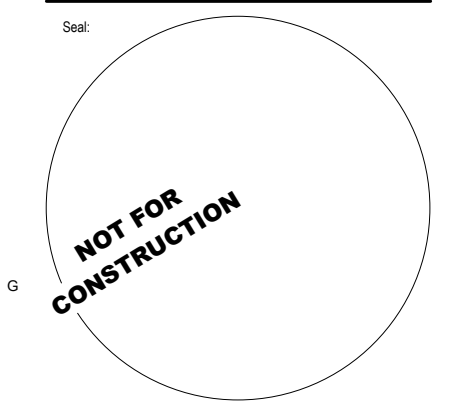
100 Jackson Street, Suite 200
Fort Myers, Florida 33901
Phone: 239.276.3838 Fax: 239.275.6286

800 Central Ave.
Naples, Florida 34102
Phone: 239.443.3100 Fax: 239.443.4100

Project:
**1st Avenue S.
Public Parking
Garage**

Owner:
City of Naples

Consultant:



Project Phase:
Schematic Design

Project #: 2204_01
Project Issue: June/2022
Sheet Issue: 12/17/22

No.	Date	Revision

Copyright © 2022, BSSW Architects, Inc. All rights reserved. No part of this document may be reproduced, stored in a retrieval system, or transmitted, in any form or by any means, electronic, mechanical, photocopying, recording, or by any information storage or retrieval system, without the prior written permission of BSSW Architects, Inc.

Sheet Title:
STORM RISER

Sheet No:
P6.0

