

**CITY OF NAPLES
PURCHASING DIVISION
CITY HALL, 735 8TH STREET SOUTH
NAPLES, FLORIDA 34102
PH: 239-213-7100 FX: 239-213-7105**

ADDENDUM NUMBER 2

NOTIFICATION DATE: 04/18/12	BID TITLE: NAPLES POLICE DEPARTMENT – HVAC AIR DUCT IMPROVEMENT PROJECT	BID NUMBER: 039-12	BID OPENING DATE & TIME: 04/26/12 2:00PM
--	---	----------------------------------	--

**THE FOLLOWING INFORMATION IS HEREBY INCORPORATED INTO,
AND MADE AN OFFICIAL PART OF THE ABOVE REFERENCED BID.**

Questions?

1. Would it be possible to get the mechanical drawings for the above project to show all of the existing ductwork to be covered?

[See attachment.](#)

2. Has there any more recent report on the conditions of the ducts other than what is mentioned in the bid?

[No.](#)

List of Attendees

The list of attendees at the pre-bid meeting is enclosed.

IMPORTANT MESSAGE

PLEASE ACKNOWLEDGE RECEIPT OF THIS ADDENDUM ON THE BID COVER SHEET.

**NON-MANDATORY PRE-BID
HVAC AIR DUCT WORK
APRIL 10, 2012 10:00 AM**

NAME Geoff Stone

COMPANY Pure Air

TELEPHONE 727-572-4550

E-MAIL ESTIMATOR@PUREAIRCONTRACTORS.COM

NAME Gregory Luther

COMPANY Duct Detectives

TELEPHONE 407-243-6601

E-MAIL GREG.LUTHER@DUCTDETECTIVES.COM

NAME Alex Jordan

COMPANY B&I Contractors

TELEPHONE 239-332-4646

E-MAIL ajordan@bandicontractors.com

NAME _____

COMPANY _____

TELEPHONE _____

E-MAIL _____

**NON-MANDATORY PRE-BID
HVAC AIR DUCT WORK
APRIL 10, 2012 10:00 AM**

NAME Chris Wilson

COMPANY Cool Zone Inc.

TELEPHONE 239-513-9199

E-MAIL coolzonechris@earthlink.net

NAME Blaine Byers

COMPANY Air Mechanical

TELEPHONE (941) 475-3715

E-MAIL bbyers@amsco-ac.com

NAME _____

COMPANY _____

TELEPHONE _____

E-MAIL _____

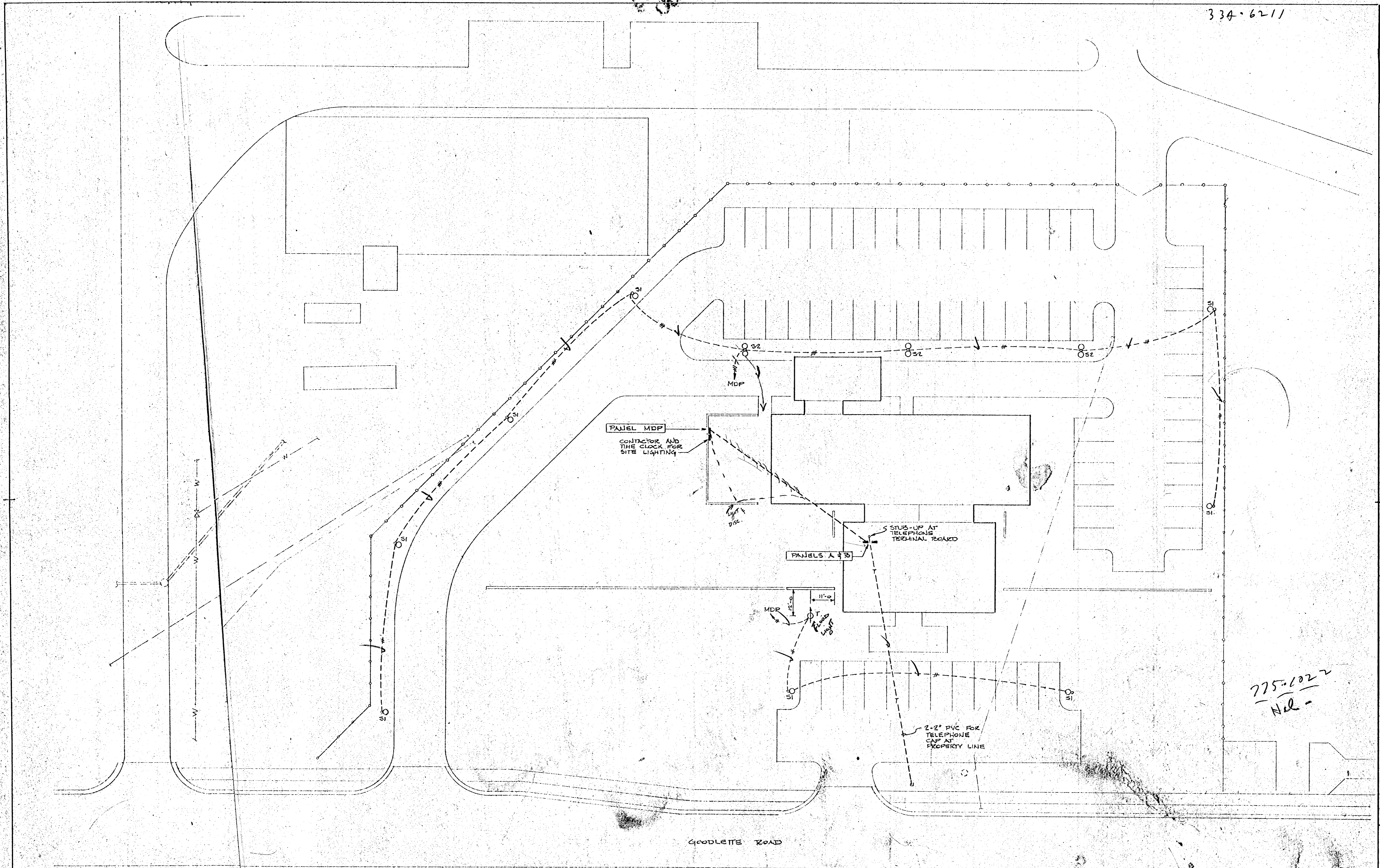
NAME _____

COMPANY _____

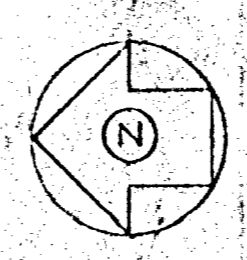
TELEPHONE _____

E-MAIL _____

334-6211



SITE PLAN - ELECTRICAL
 SCALE: 1" = 20'-0"



775-1022
 Nel -

REVISIONS NUMBER	DATE
1	
2	
3	
4	
5	
6	
7	

SHEET NUMBER
ME 1.1
 3

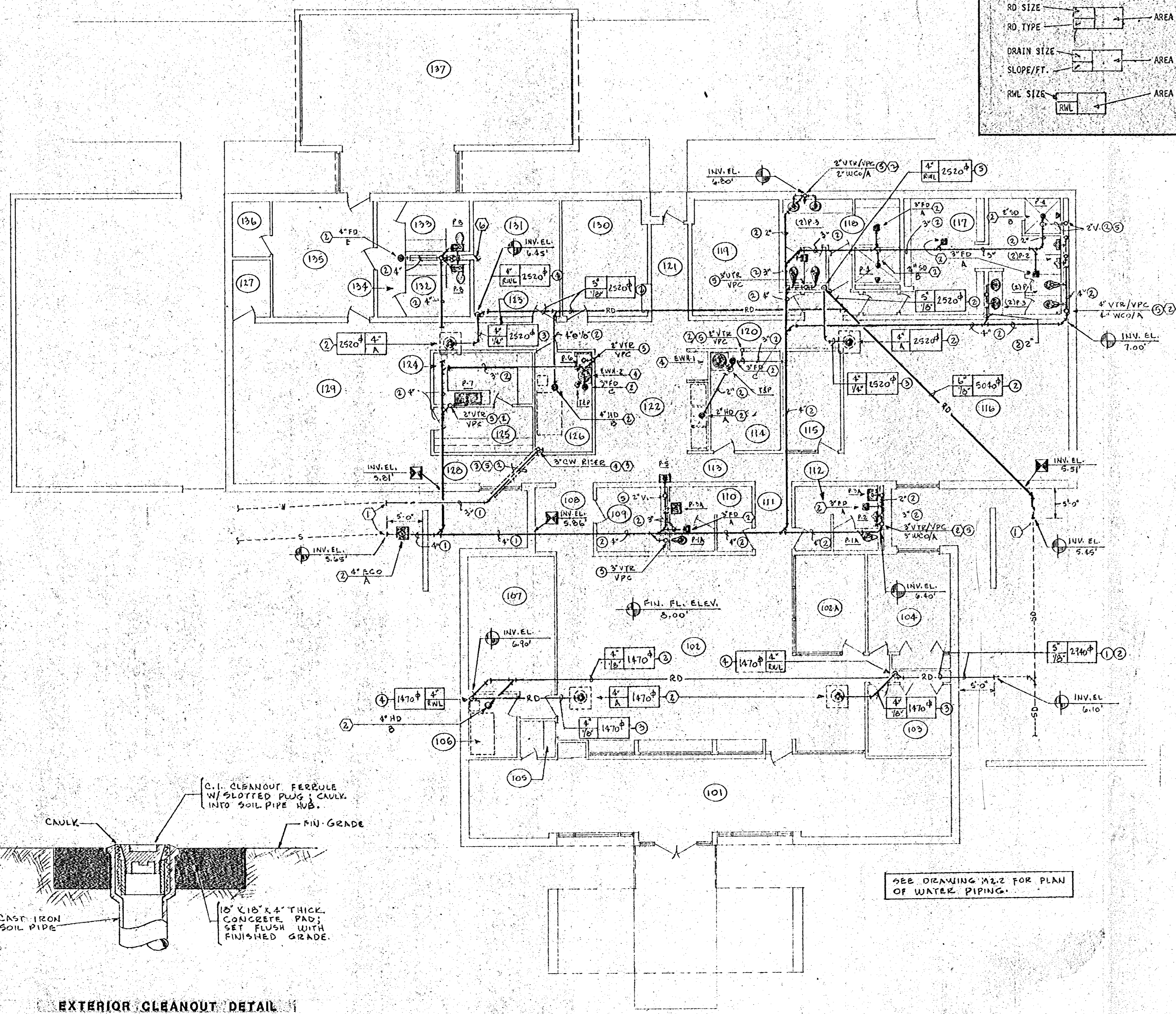
NEW MUNICIPAL FACILITIES FOR THE CITY OF NAPLES, FLORIDA

PUBLIC SAFETY BUILDING SITE PLAN - ELECTRICAL

STEWART - RICHMOND ARCHITECTS INC.
 308 EAST HARBOR STREET TAMPA, FLORIDA 33602
 CLAYTON ENGINEERS, INC. ROBERT P. WEAVER, INC.
 CIVIL/SUBSTRUCTURAL ENGINEERS MECHANICAL/ELECTRICAL ENGINEERS
 GREENBERG-BUONANNI LANDSCAPE ARCHITECTS

COMMISSION NO: 77014
 DATE: 24 OCTOBER 77

DRAWING BY
Dem
 CHECKED BY
RPI
 SET NUMBER



ROOF DRAINAGE NOTES

1. Coordinate exact location of roof drains with roof joists.
2. Horizontal drains suspended through roof joists.

ROOF DRAINAGE SYMBOLS

RD SIZE: [Symbol] AREA DRAINED

RD TYPE: [Symbol] AREA DRAINED

DRAIN SIZE: [Symbol] AREA DRAINED

SLOPE/FT: [Symbol] AREA DRAINED

RWL SIZE: [Symbol] AREA DRAINED

PLUMBING LEGEND

SYMBOL	ABBREVIATIONS	DESCRIPTION
[Symbol]		Soil and Waste Piping
[Symbol]		Sanitary Vent Piping
[Symbol]		Roof Drainage Piping
[Symbol]		Fire Sprinkler Piping
[Symbol]		Condensate Drain Piping
[Symbol]	CW	Domestic Cold Water Piping
[Symbol]	HW	Domestic Hot Water Piping
[Symbol]	HWC	Domestic H.W. Recirculating Line
[Symbol]	GV	Gate Valve
[Symbol]	OS & Y-GV	Outside Screw & Yoke-Gate Valve
[Symbol]	SV	Globe or Stop Valve
[Symbol]	CV	Horizontal Swing Check Valve
[Symbol]	UN	Pipe Union
[Symbol]		Accessory Item - Floor Drain
[Symbol]		Type or Size Type A
[Symbol]		Accessory Item - Hose Bibb/Type A
[Symbol]		Mounting Height 24" above Fin. Floor
[Symbol]		Pitch piping down in direction of arrow.
[Symbol]		Elevation at bottom of pipe above finished floor.
[Symbol]		Invert = Flow line elevation of drains, sewers & manhole junctions.
[Symbol]		Sanitary Gravity Drain on Sewer
[Symbol]		Water Main & Building Service
[Symbol]		Storm Drain or Sewer
[Symbol]		Location of New Pipe Connection to Existing
[Symbol]		Piping runs above dropped footing

* Denotes Exterior Utility Work NOT Under Division 15

ABBREVIATIONS

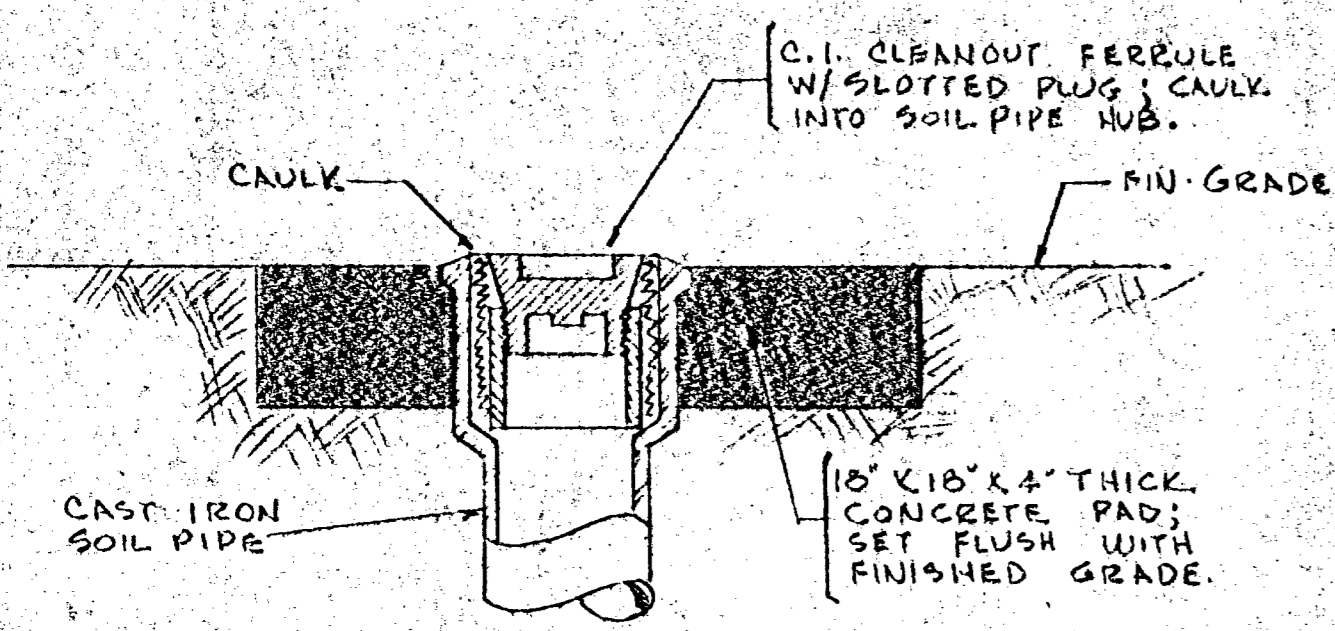
DOMESTIC WATER SYSTEM		SANITARY SYSTEM	
HB	Hose Bibb	V	Vent Piping
SA	Shock Arrestor	RV	Relief Vent
MF	Manifold	VTR	Vent Thru Roof
HWC	Hot Water Circulating Pump	YH	Vent Header
DV	System Drain Valve	WCO	Wall Cleanout
TDV	Tank Drain Valve	FCO	Floor Cleanout
DU	Dr-Electric Union	ECO	Exterior Cleanout
PIPE AND FITTINGS		CO	Exposed Cleanout
GSP	Galvanized Steel Pipe	SD	Shower Drain
GMI	Galvanized Malleable Iron Screwed Fittings	FD	Floor Drain
CI-SP	Cast Iron Soil Pipe and Fittings	HD	Hub Drain
PVC-DWV	Polyvinyl Chloride (Drainage-Waste-Vent) Pipe and Fittings	CE	Cast Iron
		NB	Nickel Brass (Grate)
		VPC	Vandalproof Vent Cap
		EQUIPMENT, ACCESSORIES & MISG.	
		RWH	Recessed Wall Hydrant
		TSP	Temperature-Pressure Relief Valve
		RD	Roof Drain
		RWL	Rainwater Leader

PIPING LOCATION LEGEND

- 1 Underground - Exterior
- 2 Below Floor Slab
- 3 Concealed in Ceiling Space
- 4 Piping Exposed in Room
- 5 Piping Concealed in Wall or Pipe Chase

DRAWING NOTES

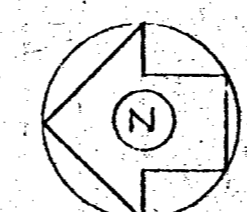
- 1 Extent of Underground Piping Under Division 15.
- 2 See Accessories Schedule and/or Typical Detail.
- 3 See Special Detail.
- 4 See Equipment Schedule.
- 5 Piping Run in PVC Conduit.



EXTERIOR CLEANOUT DETAIL
NO. SCALE

FLOOR PLAN - PLUMBING

SCALE: 1/8" = 1'-0"



DRAWING BY: J.E.D.
CHECKED BY: [Signature]

SET NUMBER: [Blank]

NEW MUNICIPAL FACILITIES FOR THE CITY OF NAPLES, FLORIDA

STEWART - RICHMOND ARCHITECTS INC.
308 EAST MADISON STREET TAMPA, FLORIDA 33602
REGISTERED PROFESSIONAL ARCHITECTS
REGISTERED PROFESSIONAL ENGINEERS

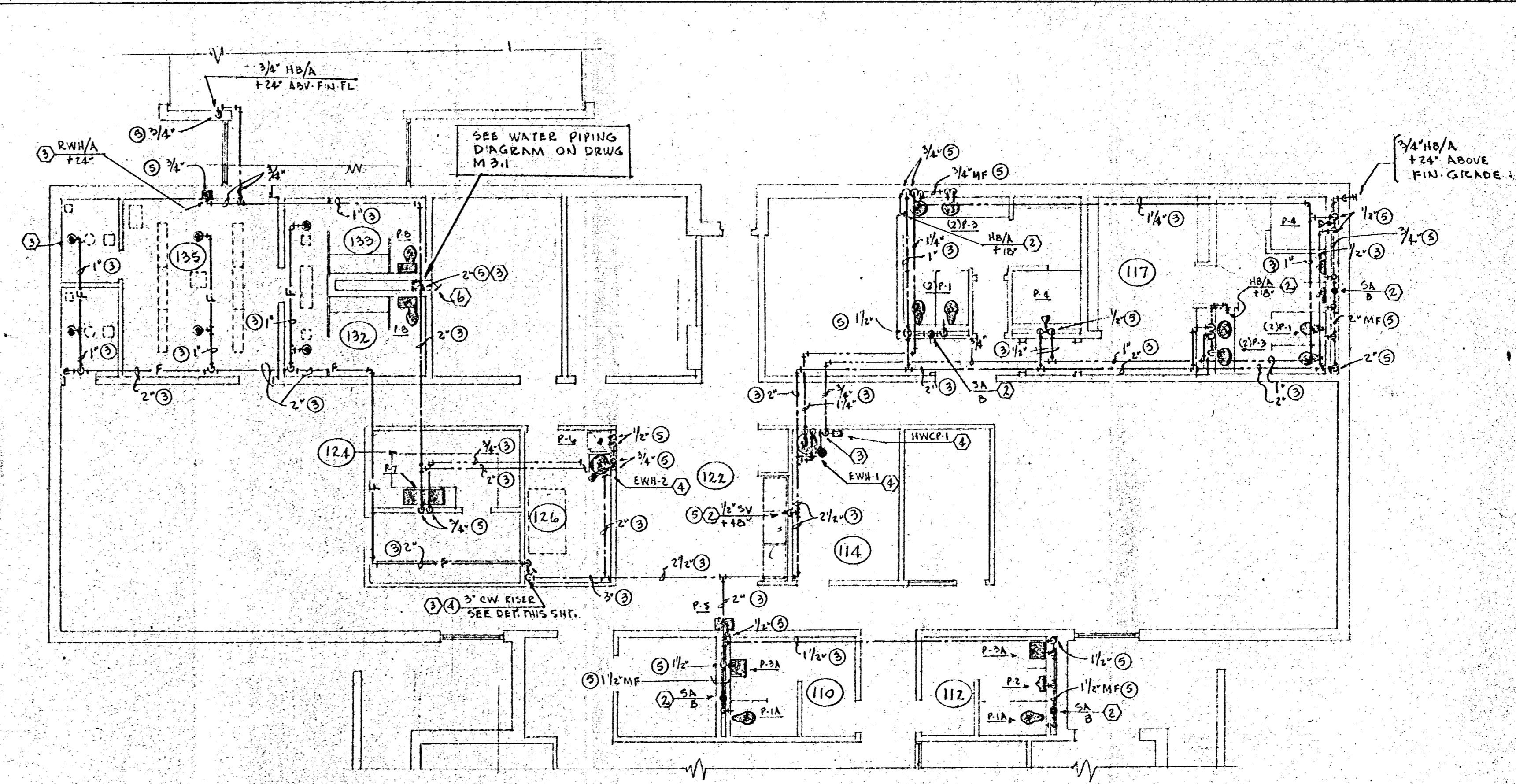
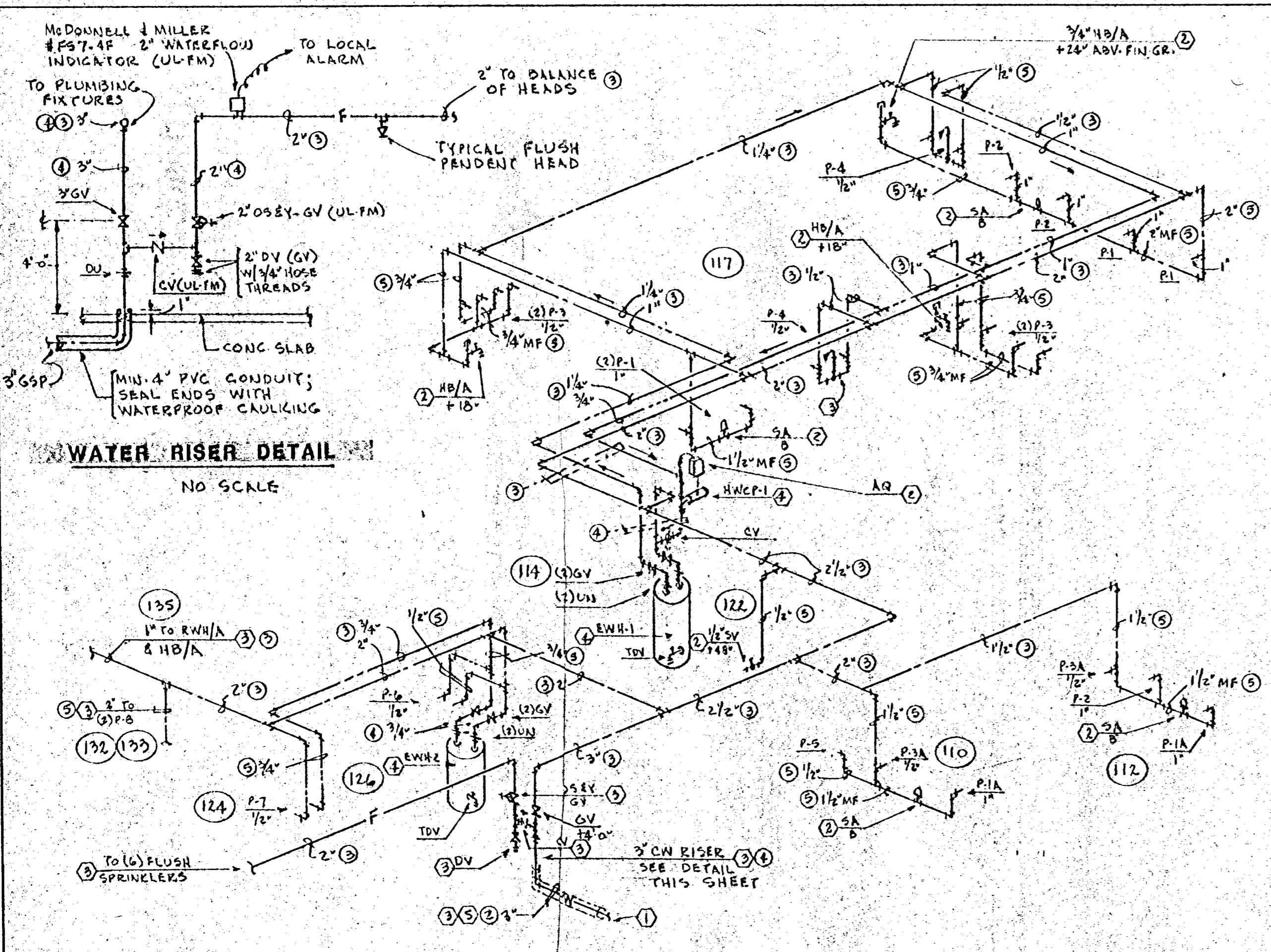
PUBLIC SAFETY BUILDING FLOOR PLAN - PLUMBING

REVISIONS NUMBER	DATE
1	
2	
3	
4	
5	
6	
7	

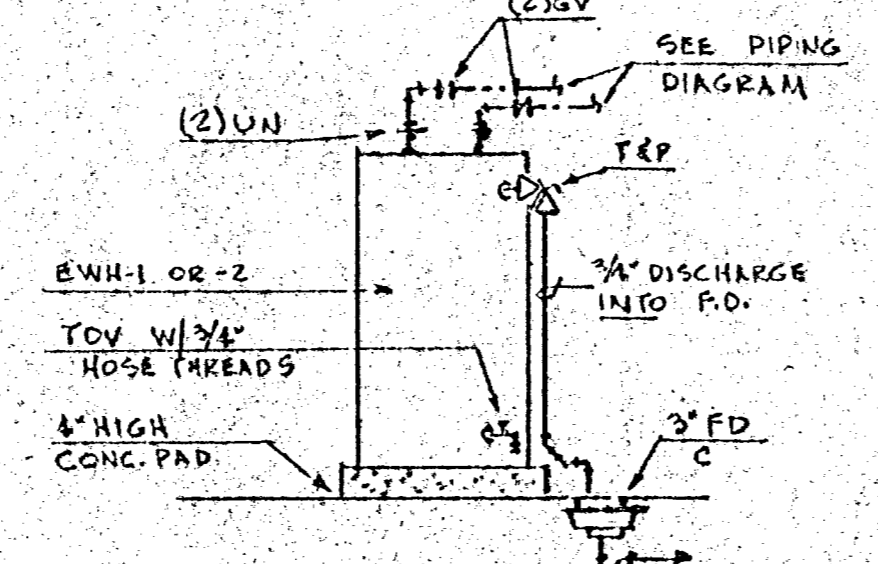
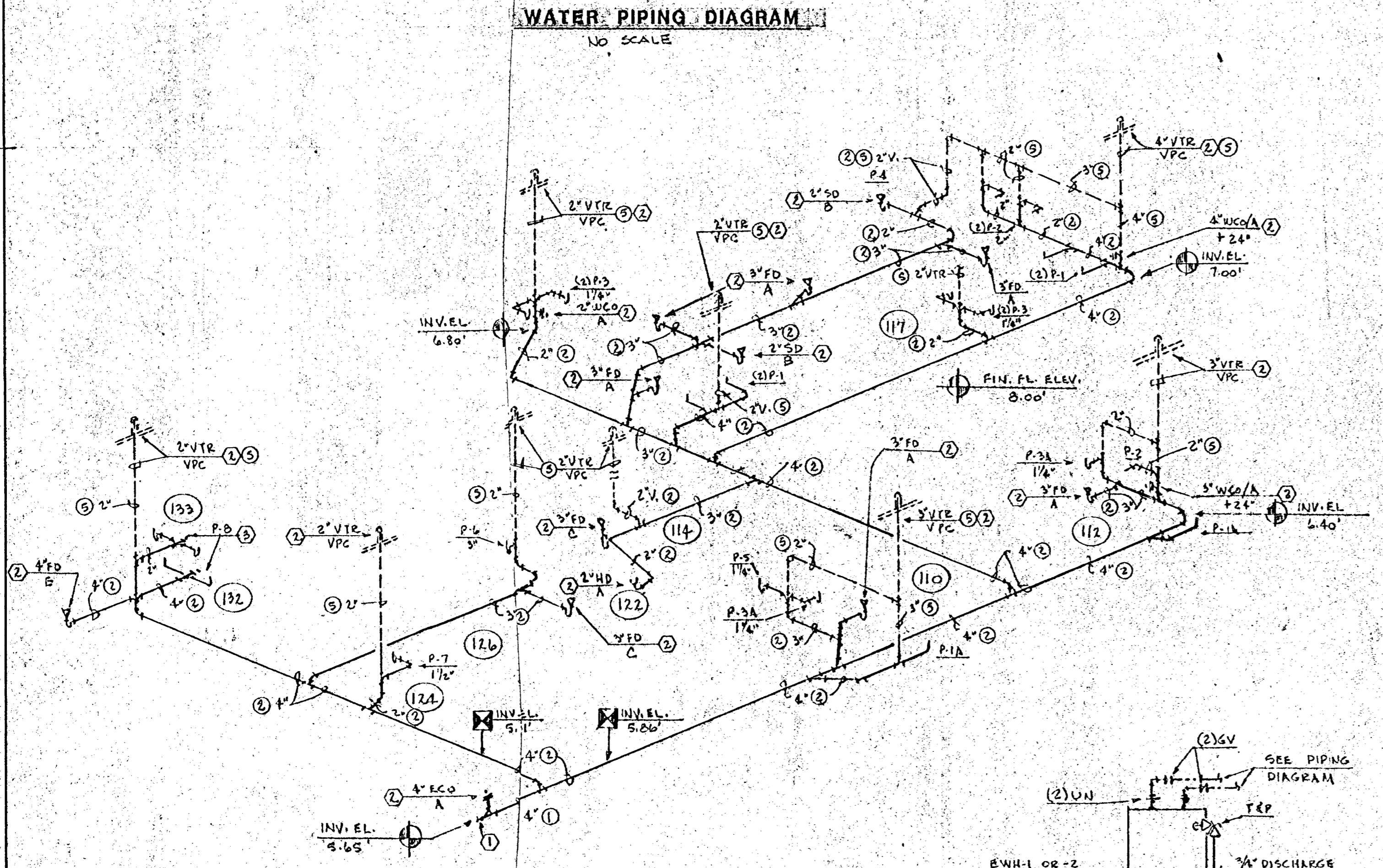
SHEET NUMBER
M21
OF
5

COMMISSION NO: 77014
DATE: 14 OCTOBER 77

23 OF 30



PLAN of OVERHEAD WATER PIPING
SCALE: 1/8" = 1'-0"



PLUMBING ACCESSORIES SCHEDULE (A)			
MARK	MANUFACTURER	NUMBER	DESCRIPTION
FD/A	Josam	30003-65	Floor Drain with 6"x6" nickel brass grate and caulk outlet.
FD/B	Josam	30002-5C	Shower drain with 5" round nickel brass grate, removable sediment basket, and caulk outlet.
FD/C	Josam	30003-6E1	Floor drain with 6" round nickel-brass extended rim grate, and caulk outlet.
FD/D	Josam	49523-3	Floor drain with 8" round body, 1/2" grate, internal aluminum dome strainer, and caulk outlet.
FD/E	Josam	30004	Floor drain cast iron bottom assembly with caulk outlet.
		51-17-80	Type "T" 5"x5" square strainer with hinged grate and vandal-proof top, and perforated strainer basket.
WCO/A	Josam	58710	Wall cleanout with 6" round stainless steel cover and machine screw; cast iron ferrule with brass cleanout plug; provide cast iron cleanout tee in wall.
ECO/A	Josam	58830-X	Cast iron cleanout ferrule with countersunk brass cleanout plug; mount in 18"x18"x4" concrete pad.
RO/A	Josam	21500-3-22	Roof drain with cast iron body and dome, steel bearing pan; deck clamp, flashing ring, and caulk outlet; provide 36"x36" sheet lead flashing.
VPC	Josam	26700 26430	Cast iron vandalproof vent cap and cast iron vent stack sleeve with caulking recess and flashing rings; provide minimum 24"x24" sheet lead flashing.
SA/A, BOAC	Josam	1485	Factory-fabricated water hammer shock arrester, with FPT inlet connection. (* sized per P.D.I. standard # WH-201).
HD/A	Josam	30002-7E2	Hub (floor) drain with 7" round nickel brass funnel strainer and caulk outlet. Install without P-trap, and connect to side inlet at floor drain.
HD/B	Josam	1830 1334-50	Cast iron hub connector with threaded outlet. Cast iron deep-seal P-trap with threaded inlet and integral backwater valve. Connect to roof drainage system.
HB/A	Chicago	387	Hose bibb with cast brass angle body, 3/4" hose end, integral wall flange, and removable tee handle. Interior: Polished chrome finish. Exterior: Rough chrome finish.
RWH/A	Woodford	B-74-EP	Recessed wall hydrant with hinged locking cover, integral hose connection, tee handle, and union elbow inlet. Brass construction with chrome finish.
SV/A	Eastman-Central	64-C	Stop valve with angle body, 1/2" I.P.S. inlet, and 3/8" O.D. tubing compression outlet; with 1/4" P-SB shallow brass escutcheon plate, chrome plated finish.
AQ	Minneapolis/ Honeywell	L-4008A	Vertical aquastat with remote bulb and immersion well, installed in HVAC line at pump for circulator control, 115 volt.

ELECTRIC WATER HEATERS		
MARK	EMH-1	EMH-2
Tank Capacity	80 Gals.	30 Gals.
Storage Temperature of Water	125°	140°
Heating Elements	2 @ 4500 w. each	2 @ 2500 w. each
Total Connected Load	9 kw	5 kw
Electric Service	208V/1Ø	208V/1Ø
Manufacturer & Number	Jackson LU-080-2-5-4	Jackson UC-030-2-3-3

HOT WATER CIRCULATING PUMP	
Capacity	5 gpm @ 8 ft head
Motor Size and Speed	1/12 HP @ 1750 rpm
Pump Connections	1 1/4" Companion Flanges
Electric Service	120V/1Ø
Manufacturer & Number	Bell & Gossett B-125

NEW MUNICIPAL FACILITIES
FOR THE CITY OF NAPLES, FLORIDA

PUBLIC SAFETY BUILDING WATER FLOOR PLAN SERVICES & DIAGRAMS

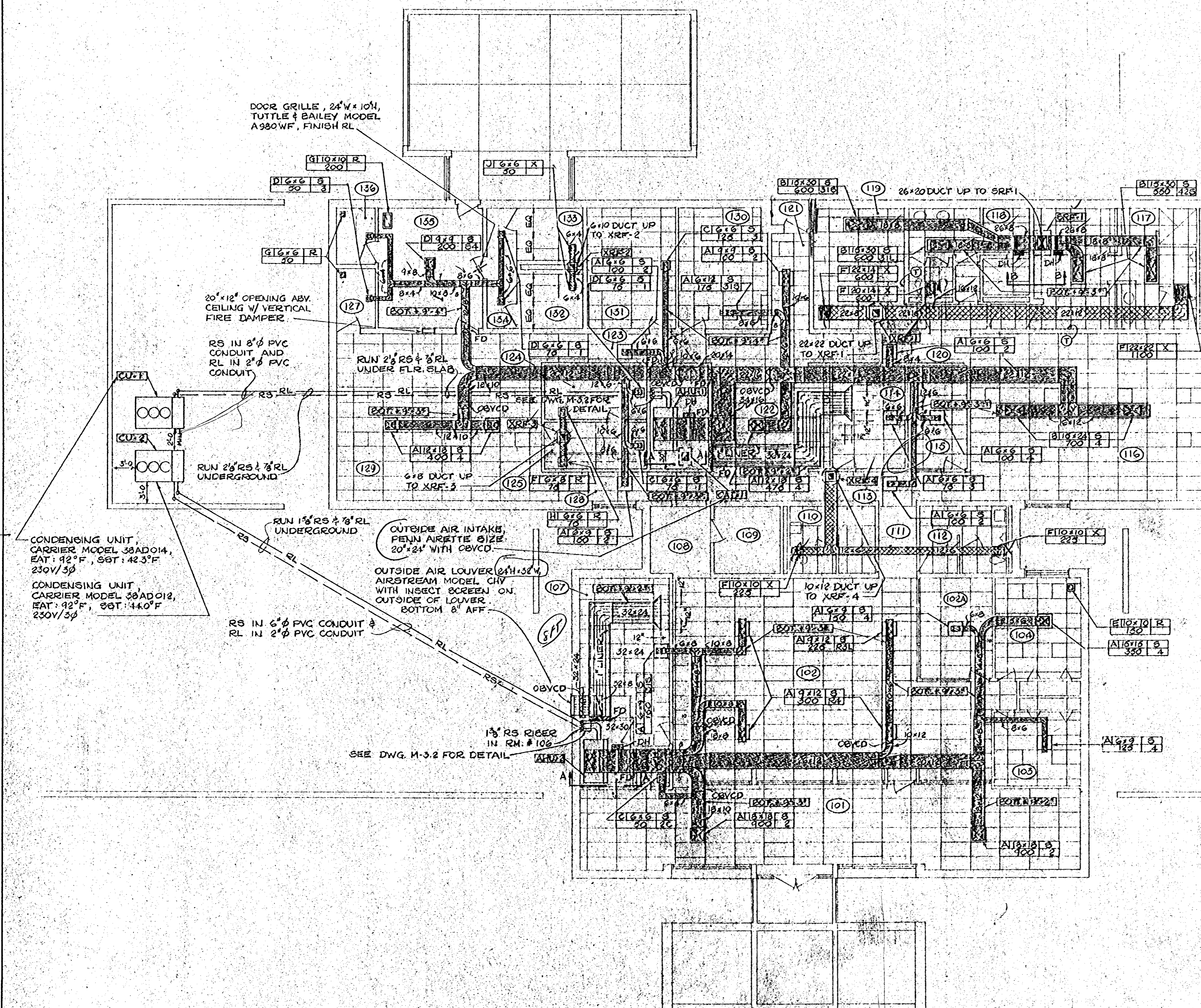
STEWART - RICHMOND ARCHITECTS INC.
301 EAST NAPLES AVENUE, NAPLES, FLORIDA 34102
CHAFFO ENGINEERS, INC. ROBERT P. CHAFFO, P.E. MECH. ELECTR. ENGINEERS
1000 BELL ST. NAPLES, FLORIDA 34102

DRAWING BY: J.R.D.
CHECKED BY: R.P.J.
SET NUMBER: 77014
COMMISSION NO.: 77014
DATE: 24 OCTOBER 77

REVISIONS	NUMBER	DATE
1		
2		
3		
4		
5		
6		
7		

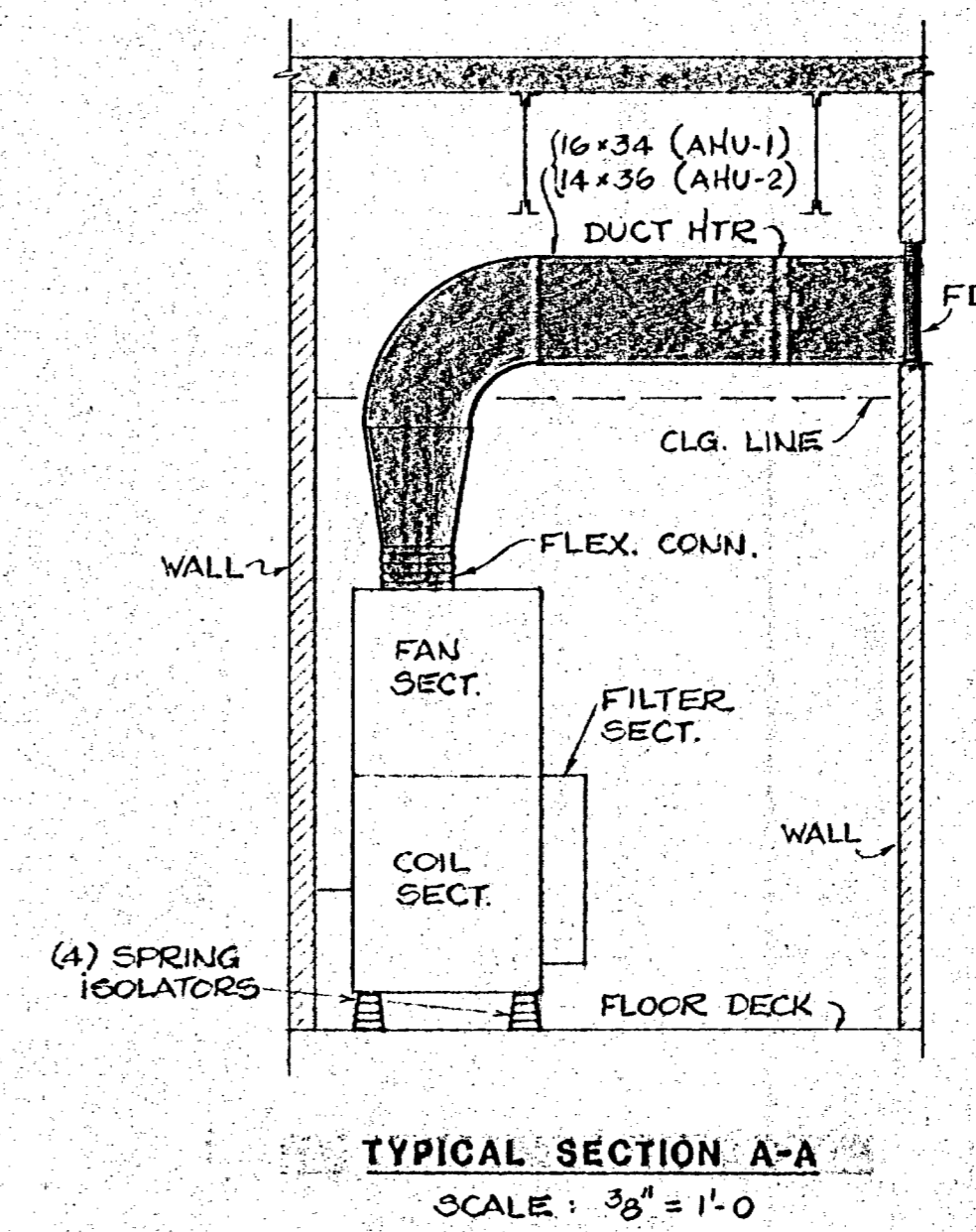
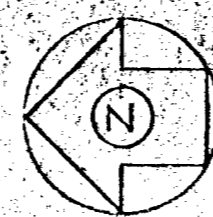
SHEET NUMBER
M2.2
OF
5

24 of 30

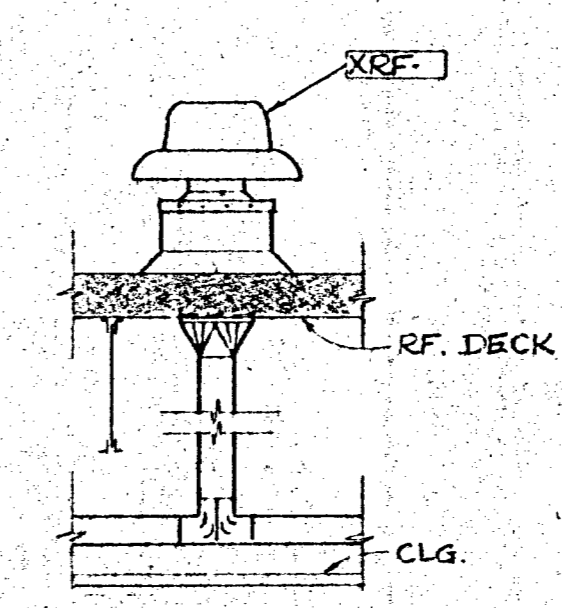


FLOOR PLAN - HVAC

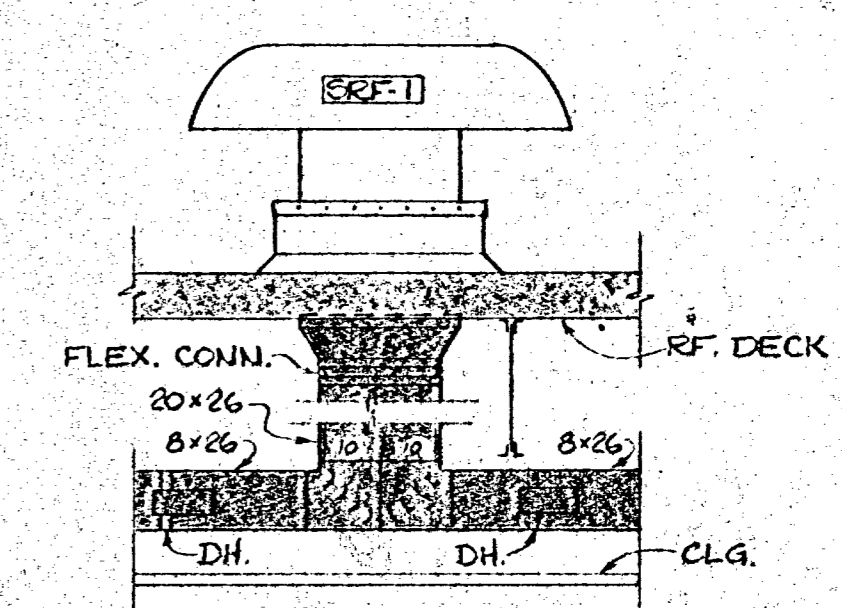
SCALE: 1/8" = 1'-0"



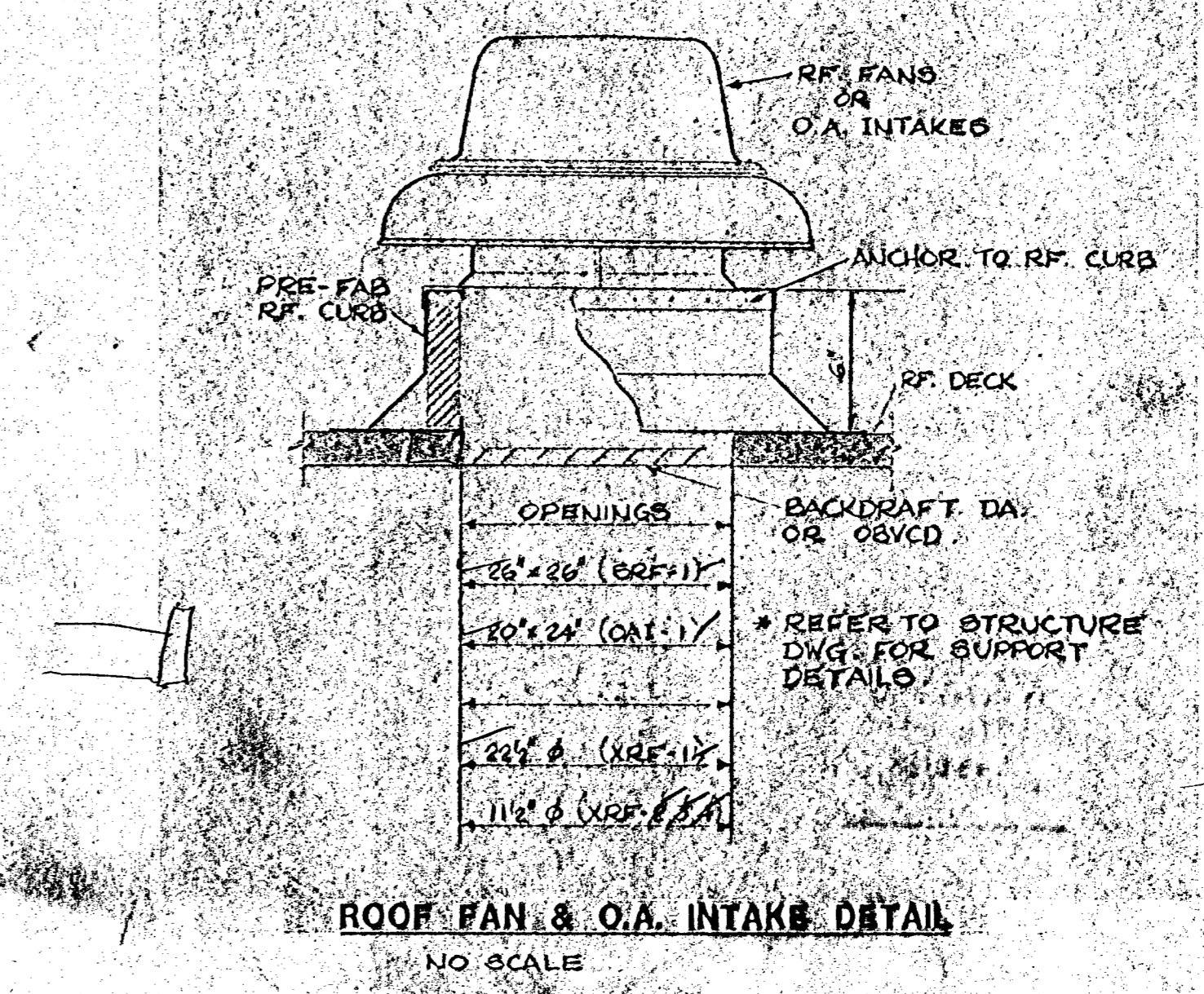
TYPICAL SECTION A-A
SCALE: 3/8" = 1'-0"



EXHAUST FAN DETAIL
NO SCALE



SECTION B-B
SCALE: 3/8" = 1'-0"



ROOF FAN & O.A. INTAKE DETAIL
NO SCALE

24 +

DRAWING BY J.M.	CHECKED BY R.P.J.	SET NUMBER
--------------------	----------------------	------------

NEW MUNICIPAL FACILITIES
FOR THE CITY OF NAPLES, FLORIDA

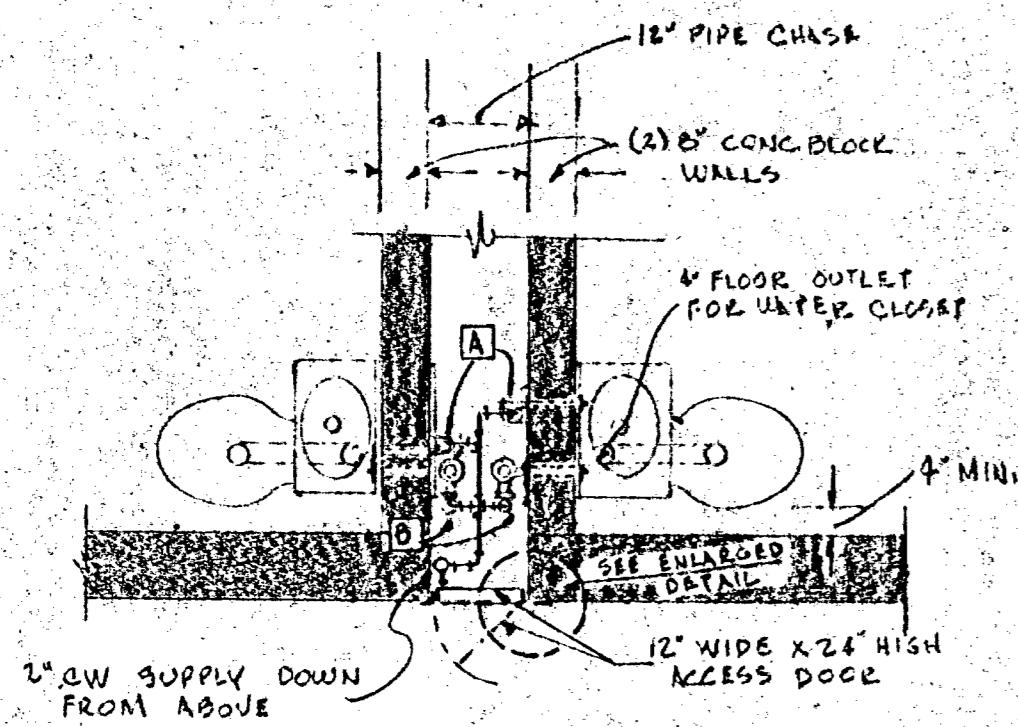
COMMISSION NO: 77014
DATE: 24 OCTOBER 77

STEWART - RICHMOND ARCHITECTS INC.
305 E. EAST MADISON STREET, TAMPA, FLORIDA 33602

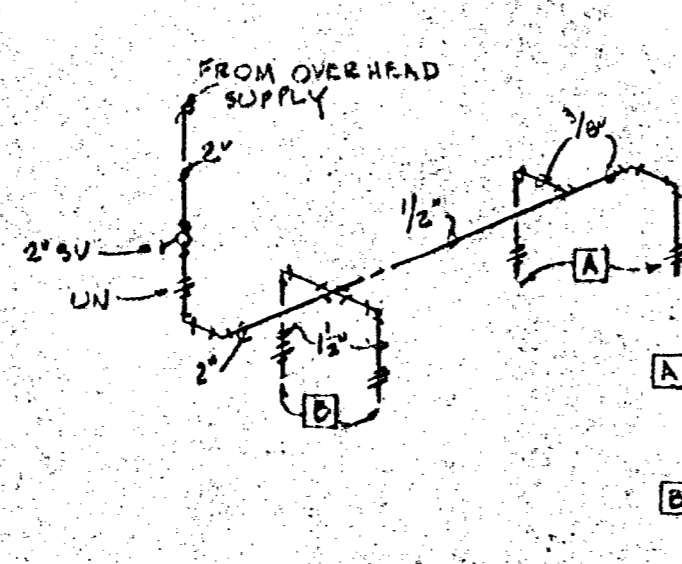
PUBLIC SAFETY BUILDING
HVAC
FLOOR PLAN

REVISIONS NUMBER	DATE
1	
2	
3	
4	
5	
6	
7	

SHEET NUMBER
M2.3
OF
5



PARTIAL PLAN of CELL TOILETS



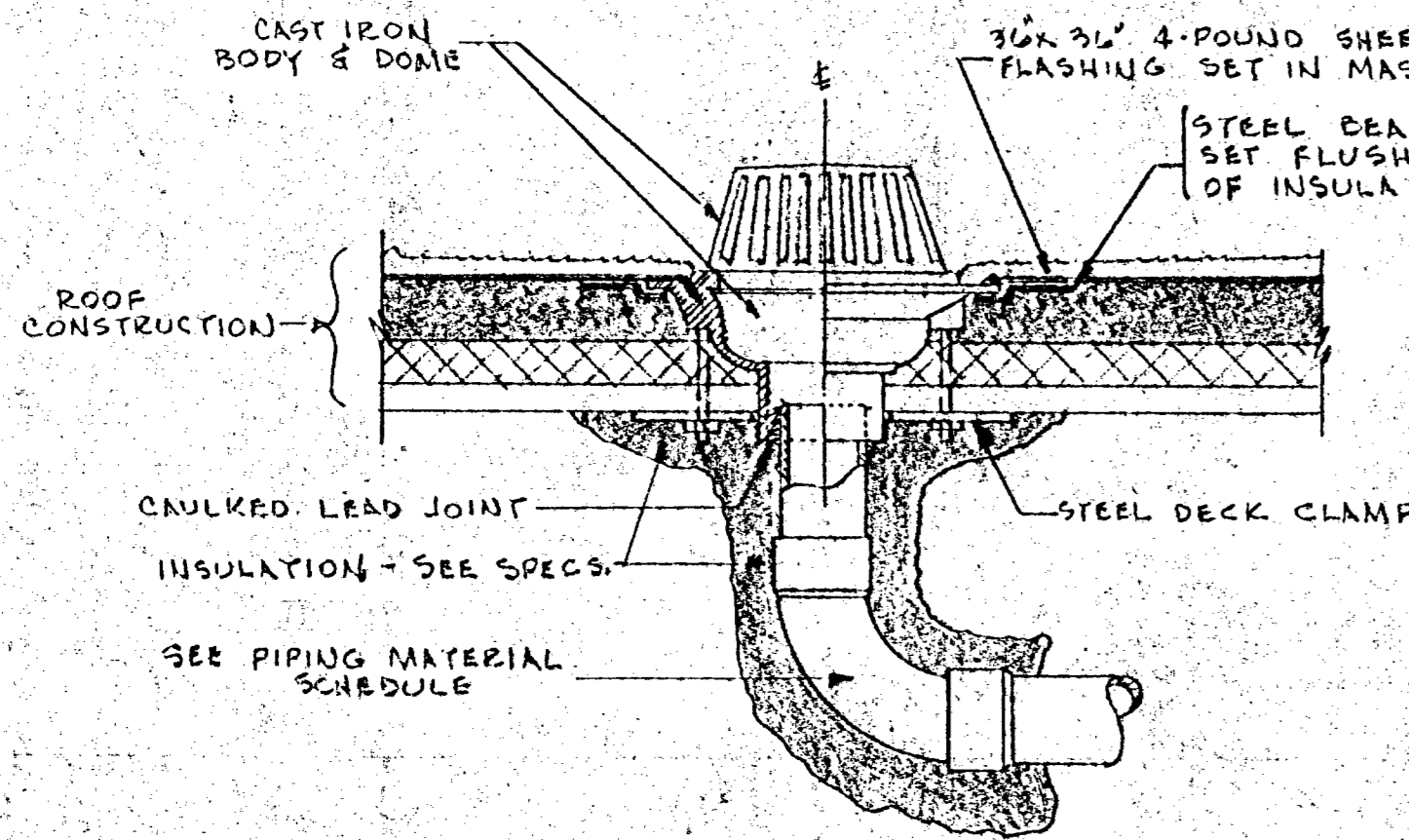
WATER PIPING DIAGRAM

SEE PLUMBING FIXTURE SCHEDULE FOR COMBINATION LAVATORY-WATER CLOSETS.

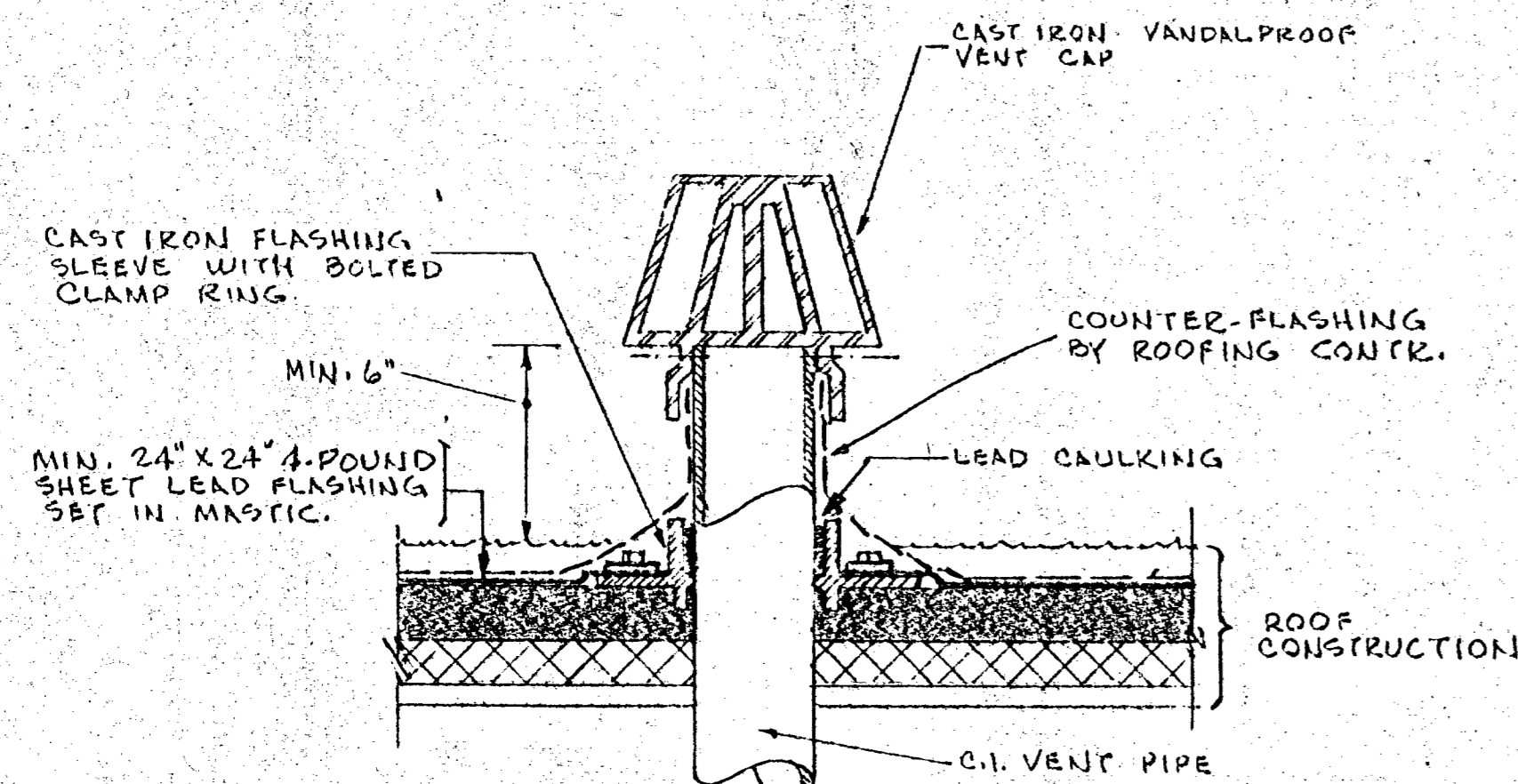
MILCOR STYLE "A" PAINTED STEEL ACCESS DOOR WITH CYLINDER LOCK & "A" LABEL. PANEL SIZE: 12" W X 24" H. BOTTOM OF ACCESS DOOR 24" ABOVE FIN. FL.

ENLARGED DETAIL of ACCESS DOOR

DETAILS of CELL TOILETS
NO SCALE

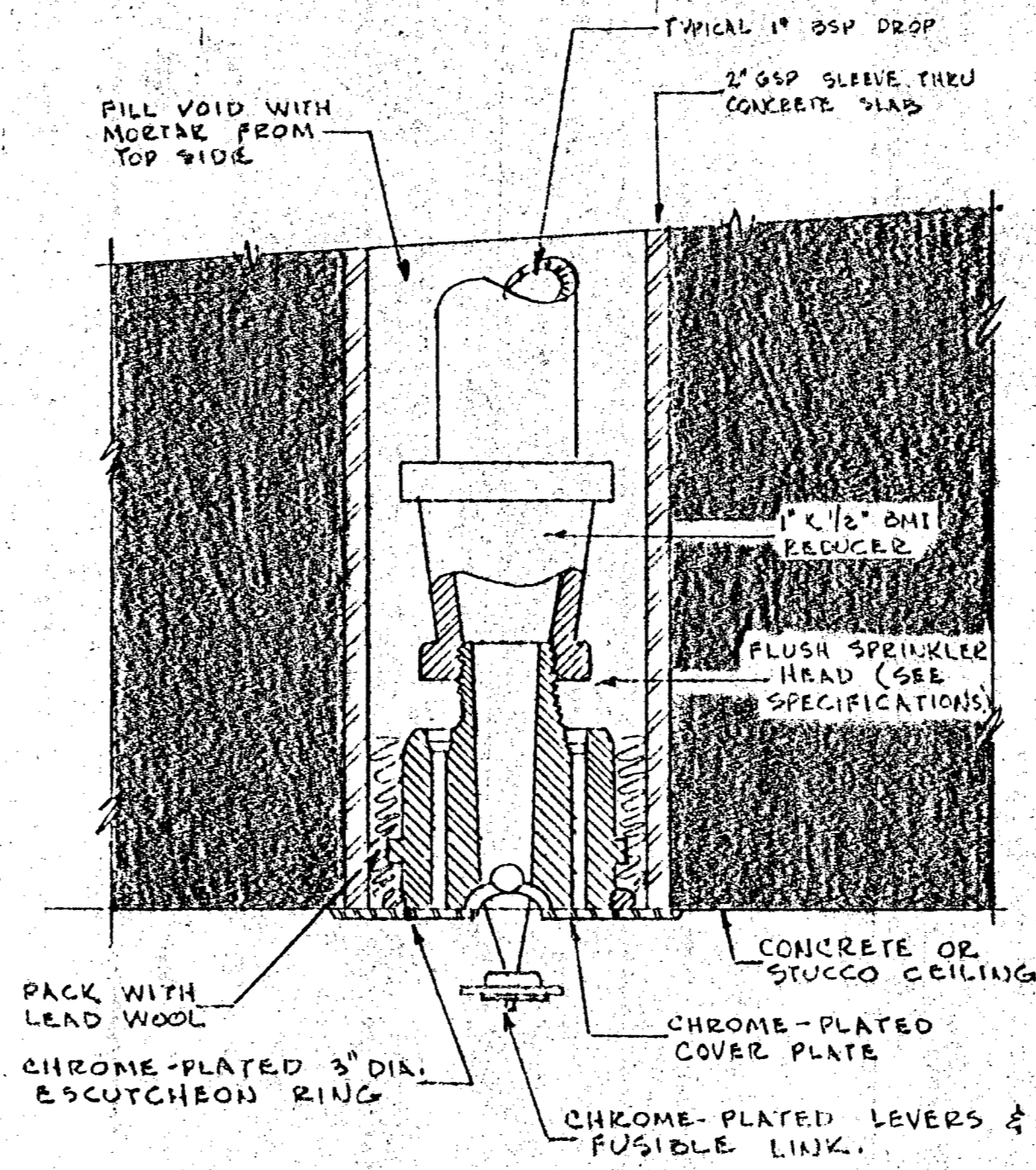


ROOF DRAIN DETAIL
NO SCALE



VANDALPROOF VENT CAP DETAIL
NO SCALE

NOTE:
ENTIRE PIPING MANIFOLD SHALL BE REMOVABLE.
(1) 3/8" UNION CONNECTIONS TO LAVATORY PUSHBUTTON VALVE ASSEMBLY.
(2) 1/2" UNION CONNECTIONS TO FLUSH VALVES FOR WATER CLOSETS.



FLUSH SPRINKLER DETAIL
NO SCALE

PIPING MATERIAL SCHEDULE			
INTERIOR SYSTEMS	PIPING CLASS [1]	TYPE OF JOINT	NOTES
SOIL AND WASTE PIPING Below Ground Floor Above Ground Floor Slab	P-1A P-1A	Caulked Caulked	[1]
SANITARY VENT PIPING Below Ground Floor Above Ground Floor Slab	P-1A P-2	Caulked No-hub	[2]
ROOF DRAINAGE PIPING Below Ground Floor Above Ground Floor Slab	P-1A D-1	Caulked Solvent	[3] [5]
DOMESTIC WATER PIPING Below Ground Floor Above Ground Floor Slab	N-1 N-2	Threaded Soldered	[6] [3] [7]
FIRE SPRINKLER PIPING Above Ground Floor Slab	N-2	Soldered	[8]
CONDENSATE DRAIN PIPING	D-1	Solvent	[3]
REFRIGERANT PIPING Inside Building Underground Exterior	R-1 R-1 R-1	Brazed Brazed Brazed	[5] [3] [5] [3] [8]

NOTES:
 [1] Refer to Specifications for complete description of all piping classes, joints and valves.
 [2] See Vent Cap Detail.
 [3] Run in PVC Conduit.
 [4] See Roof Drain Detail.
 [5] Insulate as specified.
 [6] Apply two coats of coal-tar enamel before backfilling trench.
 [7] Provide dielectric union on riser.
 [8] Weatherproof covering plus aluminum jacket.

PLUMBING FIXTURE SCHEDULE

SYMBOL	CONNECTIONS			MANUFACTURER	NUMBER	DESCRIPTION
	CW	HM	WASTE			
P-1	1"	---	4"	Kohler	K-4282-ET K-4670-SC	Penryn siphon jet elongated closet bowl with 1 1/2" top spud and bolt caps. White solid plastic open front seat, less cover, with self-sustaining check hinge.
P-1A	1"	---	4"	Kohler	K-4268-ET	Highcliff 18" high siphon jet elongated closet bowl with 1 1/2" top spud, and bolt caps. Note: Seat and valve identical to Item P-1.
P-2	3/4"	---	2"	Kohler	K-4985-T	Freshman siphon jet wall-hung urinal with 3/4" top spud, and wall hanger.
P-3	1/2"	1/2"	1 1/4"	Kohler	K-2196 K-7491 K-7715 K-9000 K-7607	Pennington self-rimming oval vitreous china counter-top bowl with 8" centers. Adjustable self-closing supply fitting with vandalproof aerator. Drain with perforated grate and 1/4" tailpiece. Cast brass adjustable P-trap with cleanout plug and 1/4" tubing outlet to wall. Angle supplies with loose key stops, 1/2" I.P.S. inlet, and annealed vertical risers.
P-3A	1/2"	1/2"	1 1/4"	Kohler Amec. Standard	K-2020 7723-018 7538-014	Greenwich 20"x18" vitreous china wall-hung bowl with 8" centers and drain assembly for wheelchair lavatory with 1/4" offset tailpiece. Offset supply pipe with loose key stop for wheelchair lavatory (CW only). Note: Supply fitting and P-trap identical to Item P-3.
P-4	1/2"	1/2"	2"	Speakman	S-1421-H S-2260-AP	Anti-scald balanced pressure shower valve with single lever handle and integral stops. Wall-mounted vandal-resistant shower head with regulated spray and volume control, and anchor plate assembly with mounting screws. Note: See Accessories Schedule for shower drain.
P-5	1/2"	---	1 1/4"	Halsey Taylor	HW-13A	Simulated-recessed electric water cooler with stainless steel fountain top, and stainless steel cabinet. Compressor: 1/5 HP - 115 volts - single phase. Note: Angle supply (1 only) and P-trap identical to Item P-3.
P-6	1/2"	1/2"	3"	Stn-Williams	HL-1800 T-15-VB T-35 T-40 M-8953-H	Precast terrazzo mop basin 24"x24"x12" high with 6" high drop front, stainless steel cap and integral drain body with nickel brass grate. Wall-mounted supply fitting with integral tops, spout with bucket hook and hose end, vacuum breaker, and top brace. 36" long hose and wall hook. 24" long wall-mounted stainless steel mop hanger. 3" cast iron deep-seal P-trap.
P-7	1/2"	1/2"	1 1/4"	Leedal Water Saver Nibco Nibco	AP-74 L-553-VB 5892 5804	Stainless steel dark room sink 17" wide x 48" long x 9" deep without backsplash, with special flange rim for counter top installation, 1 1/2" stainless drain and tailpiece, and removable stainless steel standpipe. Ledge mixing faucet with swing gooseneck spout, serrated hose end, vacuum breaker, & L-137 mounting shank. 1 1/2" PVC-DWV adjustable P-trap with slip joint inlet, and 1 1/2" PVC-DWV pipe to wall. 1 1/2" PVC-DWV male adapter; connect to 1 1/2" x 2" CI-SP tapped sanitary tee in wall. Note: Angle supplies identical to P-3.
P-8	1 1/4"	---	4"	Acorn	1564-R & L 1761-2G 1770-1 1773 2822-Z 1791	Stainless steel lavatory-toilet combination fixtures with integral seat and drain outlet to floor. Self-closing lavatory push button valve assembly for cold water only, with 1/8" wall plate for 6" thick wall. Fast drain for lavatory bowl. 1 1/2" thru-wall waste connection with adjustable P-trap and cleanout. Concealed toilet flush valve with pushbutton vacuum breaker, and #2895 thru-wall connection for 6" wall. Toilet tissue holder.

DRAWING BY J.R.D.
CHECKED BY R.P.S.
SET NUMBER

COMMISSION NO: 77014
DATE: 24 OCTOBER 77

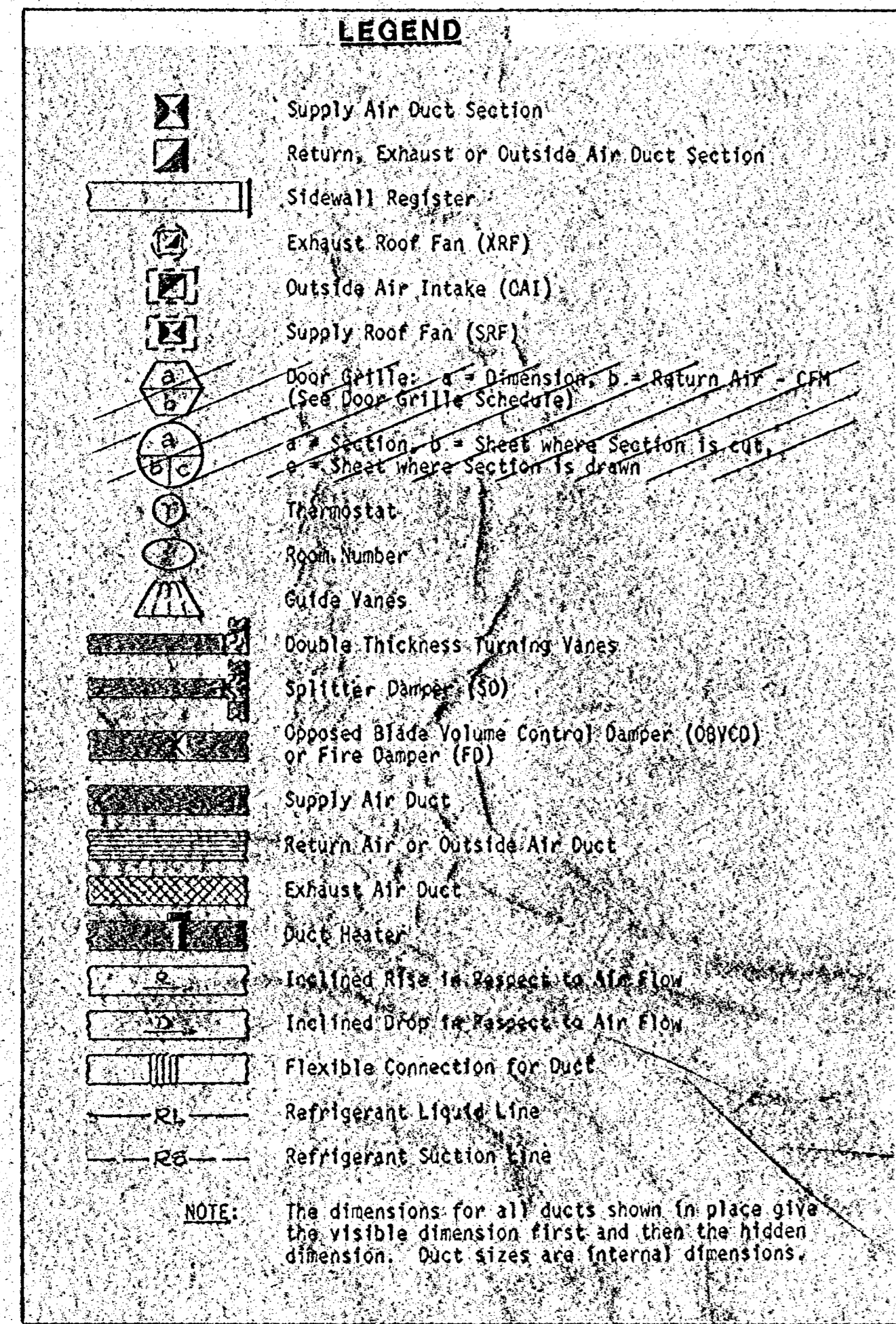
NEW MUNICIPAL FACILITIES FOR THE CITY OF NAPLES, FLORIDA
STEWART - RICHMOND ARCHITECTS INC.
333 EAST MADISON STREET TAMPA, FLORIDA 33602
REGISTERED PROFESSIONAL ARCHITECTS
REGISTERED PROFESSIONAL ENGINEERS
REGISTERED PROFESSIONAL LANDSCAPE ARCHITECTS

PUBLIC SAFETY BUILDING
DETAILS & SCHEDULES

REVISIONS NUMBER	DATE
1	
2	
3	
4	
5	
6	
7	

SHEET NUMBER
M.31
of
5

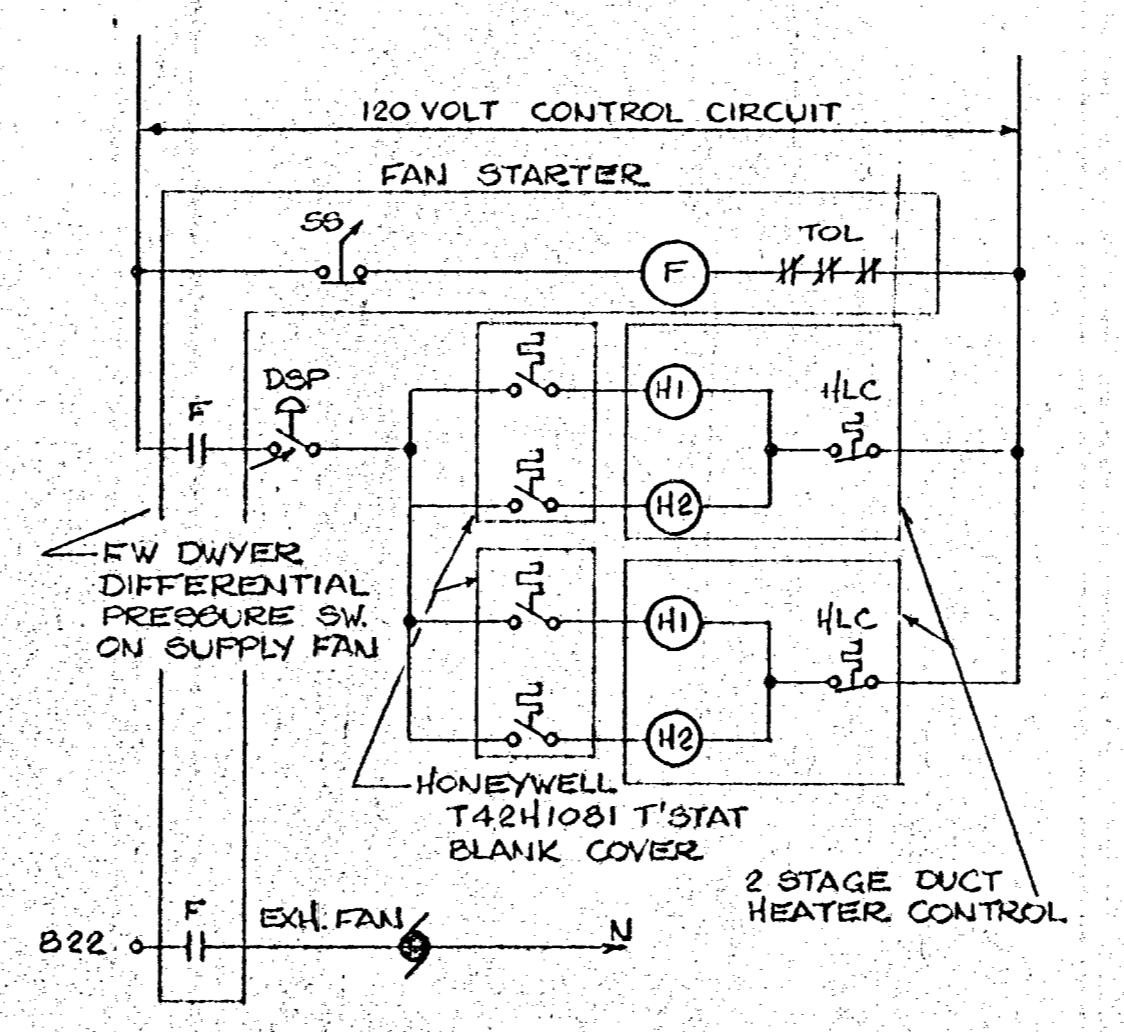
06-10-80



AIR HANDLER SCHEDULE

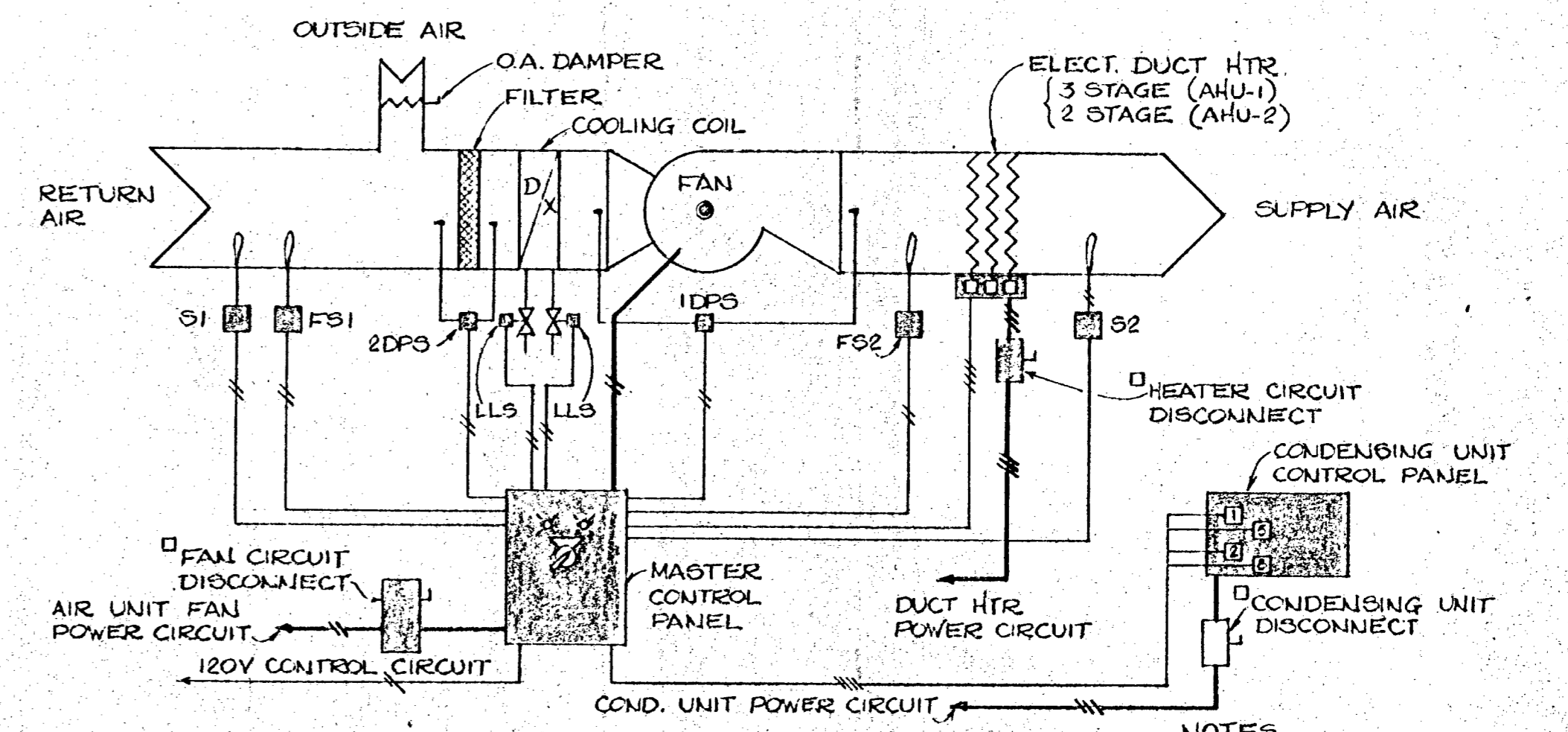
	AHU-1	AHU-2
Carrier Model	39E08	39E08
Supply Air, cfm	4300	3750
Static Pressure, In WC	2.0	1.8
Outside Air, cfm	975	700
Coil Area, sq. ft.	7.78	7.78
Rows/Fins, 4" Tubes	4/14	4/14
Circuiting	Half	Half
Face Velocity, fpm	553	482
Total Cfg. Cap., MBH	178	148
Ent. Air DB	79.7	81
Ent. Air WB	68.9	69.2
Lvg. Air DB	57.3	55.1
Lvg. Air WB	58.8	54.7
Rfrg. Suction Temp.	42.3	50.0
Fan Motor HP	1	1
Fan RPM	3000	2700
Voltage	230/1Ø	230/1Ø
Duct Heater Kw/Stages	28/3	20/2
Voltage	230/3Ø	230/3Ø
Carrier Cond. Unit	38A0014	38A0012
Voltage	230/3Ø	230/3Ø

Note: Vertical draw-thru rooftop fan section with 3 lb. insulation, intermixed row split coil in VCS coil section with 3 lb. insulation and HVFL high velocity filter section. Mount unit on 4 spring isolators.



LOCKER ROOM H & V CONTROL DIAGRAM

NOTES
 SO - ON OFF SELECTOR SWITCH
 H1 - FIRST STAGE HEATER CONTACTOR
 H2 - SECOND STAGE HEATER CONTACTOR
 HLC - HEATER HIGH LIMIT



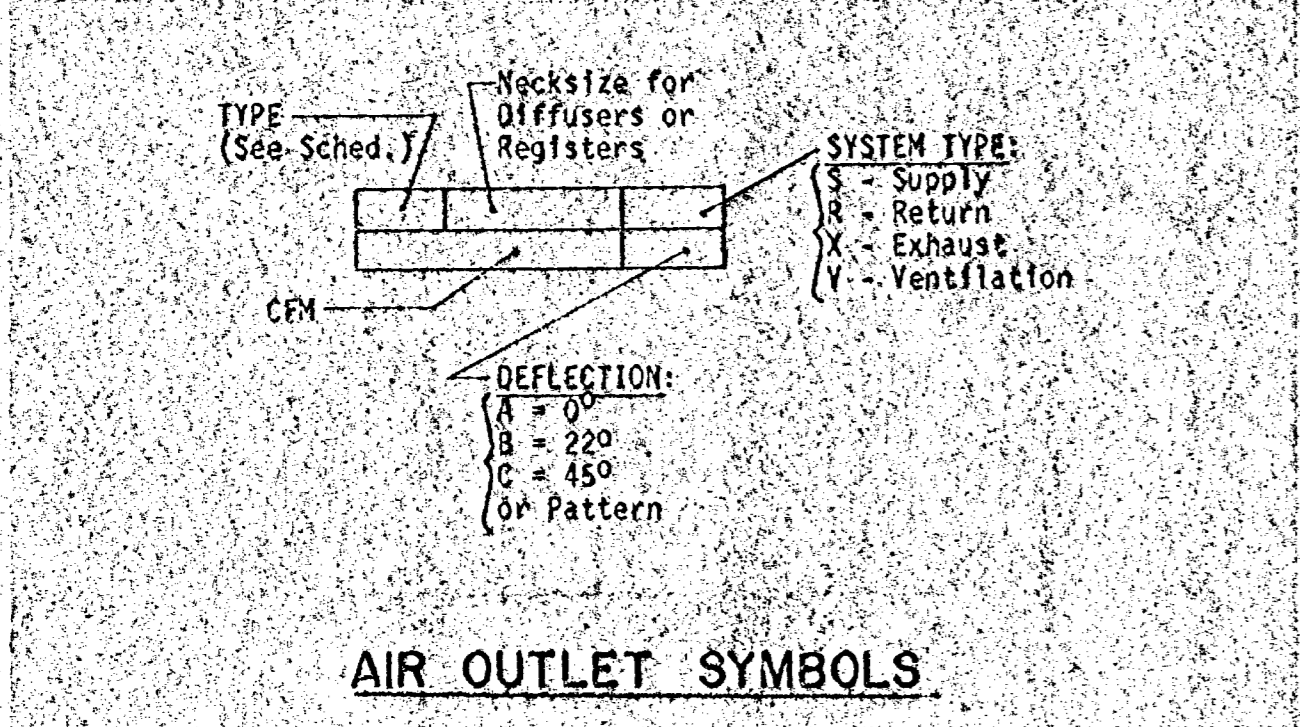
A/C UNIT CONTROL DIAGRAM

NOTES
 HONEYWELL EQUIPMENT
 S1 - T7022A1010 RETURN SENSOR
 S2 - C7046A1004 DIECHARGE SENSOR
 FS1,2 - LA419D1042 FIRESTAT
 IDPS - SPDT DWYER DIFF. PRESSURE SW.
 2DPS - SPST
 Ø - DENOTES EQUIP. FURNISHED UNDER DIV. 16

POWER VENTILATION EQUIPMENT

Mark	XRF - 1	XRF - 2	XRF - 3	XRF - 4	SRF - 1
Model	Penn Domex L8 24	Penn Domex X800L	Penn Domex XR60L	Penn Domex XR94L	Penn Airrette SAB 243
CFM	2300	100	150	450	2300
SP	.125	.125	.125	.125	.375
Fan Speed	365	1100	1360	1250	860
HP	1/6	1/12	1/25	1/10	1/2
Voltage	120V/1Ø	120V/1Ø	120V/1Ø	120V/1Ø	120V/1Ø

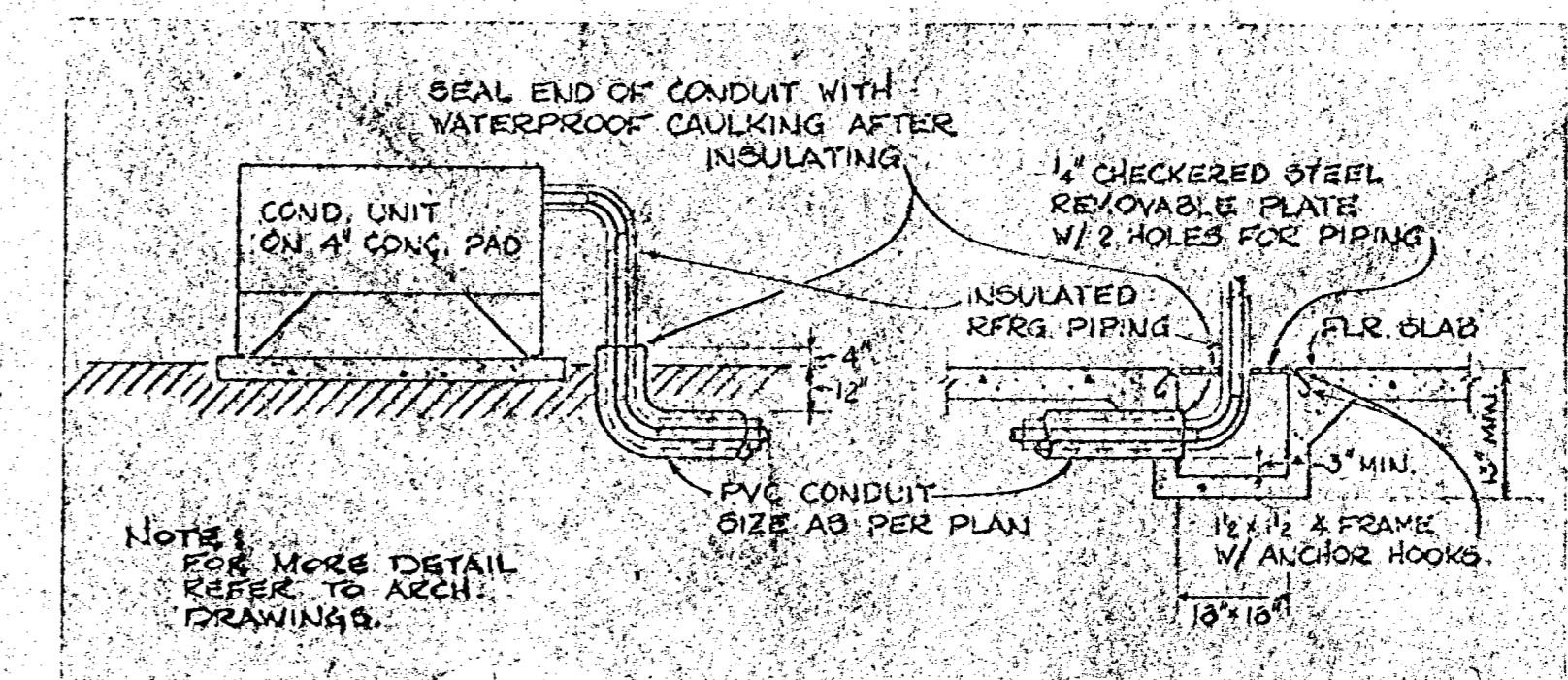
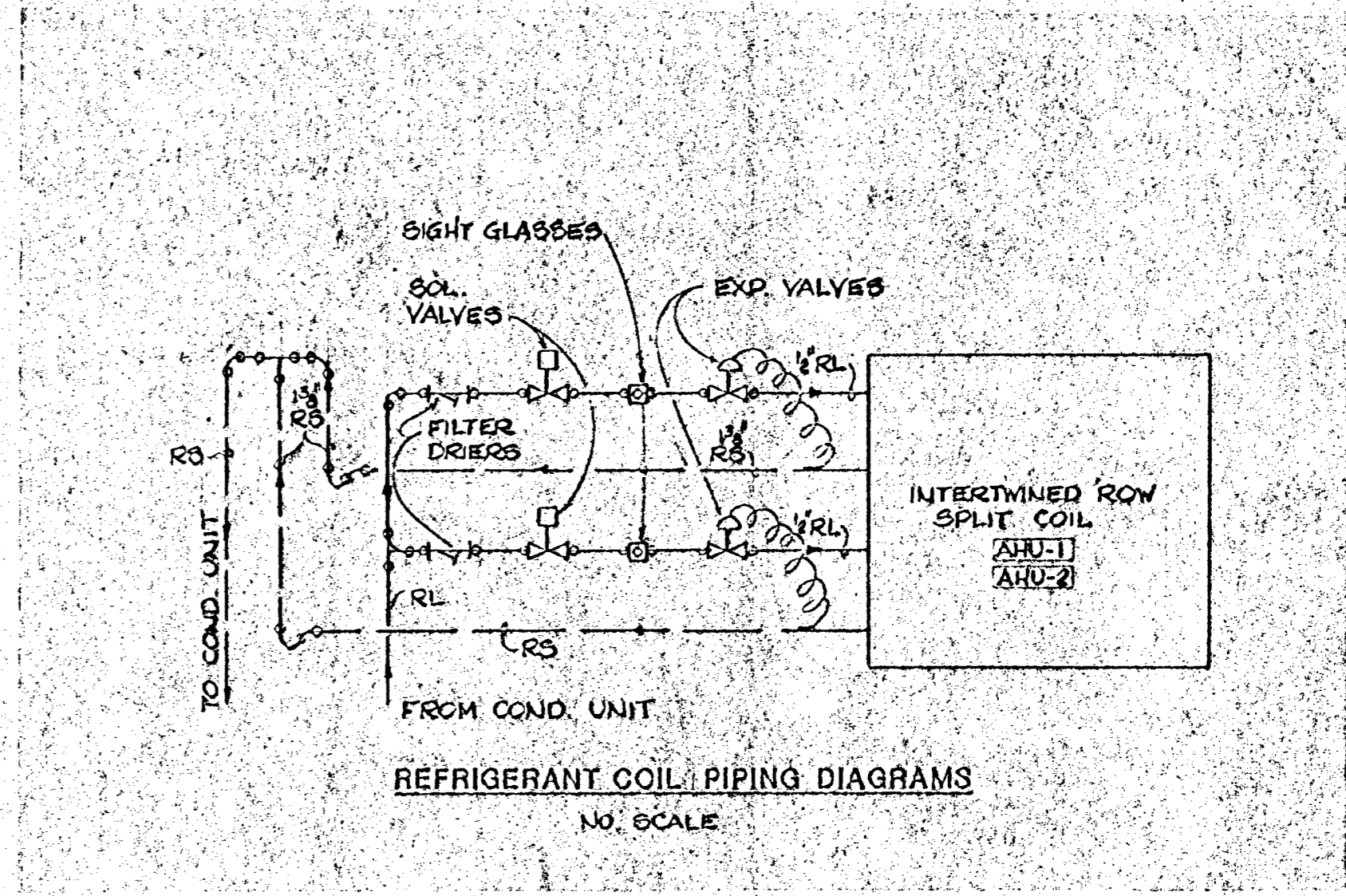
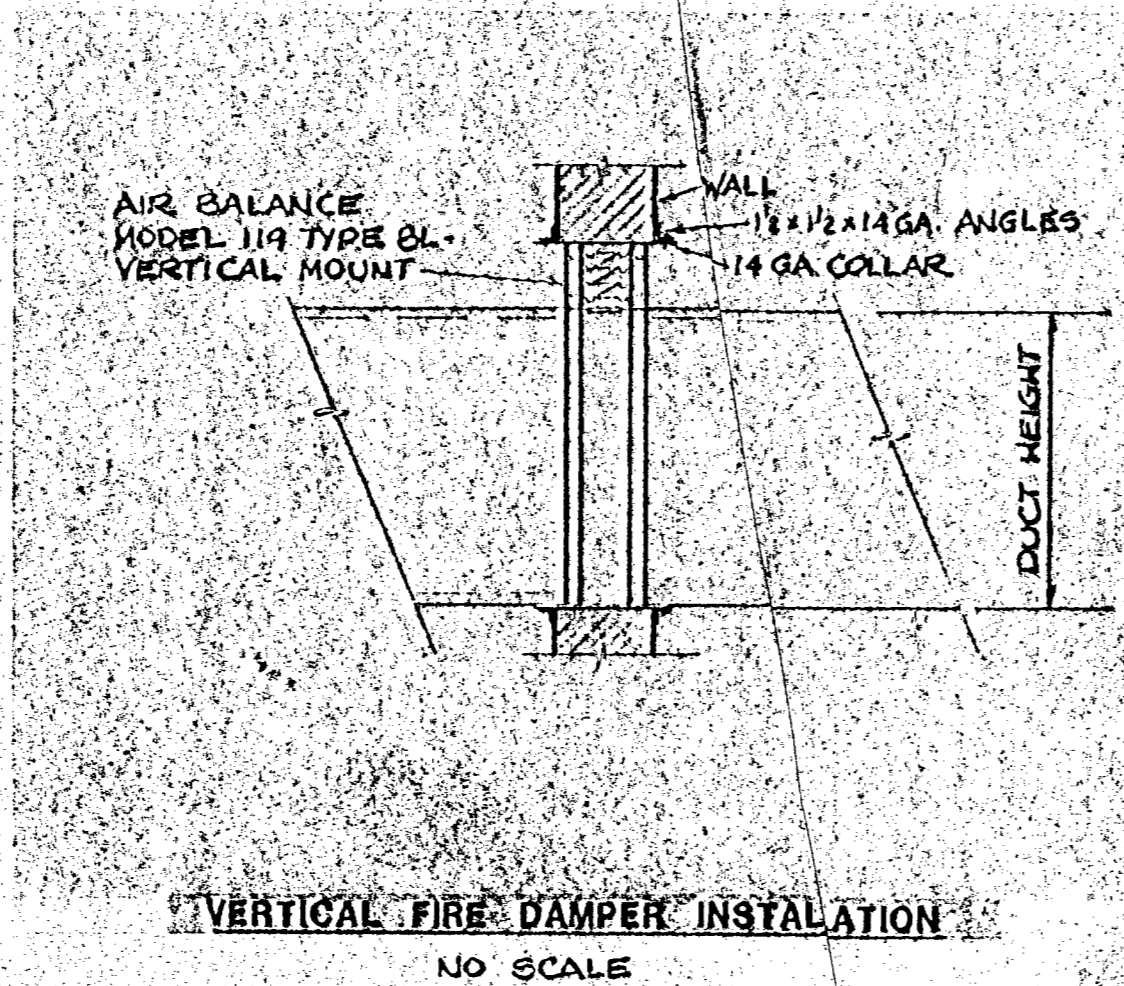
Remarks:
 1. Provide backdraft dampers.
 2. Provide (2) 18 Kw/3 step duct heaters, 230V/3Ø for SRF - 1.



AIR OUTLET SCHEDULE

A	Type 24x24 panel with (*) AML4 (**) finish 8-377, M2 damper
B	Type 48x24 panel with (*) AML4 (**) finish 8-377, M2 damper
C	Type 12x12 panel with (*) AML4 (**) finish 8-377, M2 damper
D	Type (*) ANS (**) finish 8-377, M2 damper
E	Type (*) A700E4 finish 8-377
F	Type (*) A77DL4 finish 8-377
G	Type (*) A700 finish 8-377
H	Type (*) A770 finish 8-377
J	Type (*) T7700 finish AE

NOTES:
 1. (*) For size of neck, refer to notes on drawing.
 2. (**) For air distribution pattern, refer to notes on drawing.
 3. Model numbers shown are Tuttle & Bailey.



DRAWING BY: *XX*
 CHECKED BY: *PP*
 SET NUMBER

COMMISSION NO: 77014
 DATE: 24 OCTOBER 77

NEW MUNICIPAL FACILITIES FOR THE CITY OF NAPLES, FLORIDA

STEWART - RICHMOND ARCHITECTS INC.
 137 EAST MADISON STREET
 TAMPA, FLORIDA 33602

PUBLIC SAFETY BUILDING DIAGRAMS & SCHEDULES

REVISIONS NUMBER DATE
 1
 2
 3
 4
 5
 6
 7

SHEET NUMBER
M 3.2
 OF
5

07